

COMMERCIAL

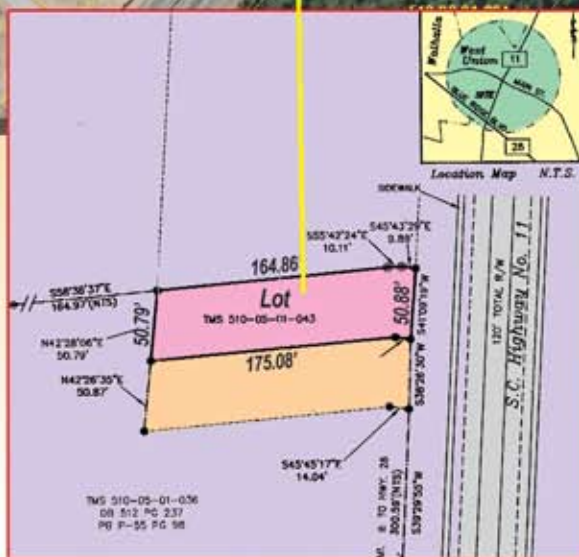
Property

PROFILE



THURSDAY JULY 9TH 6:15 PM
HWY. 11 ♦ WEST UNION

The Heart of West Union ... is the single lot which will be offered at auction from the Seneca auction location (Property ID 154). This level lot has nice frontage on Highway 11 with large traffic count daily. It is easily accessible from Highway 28 just before West and East Main Street intersection. Detail plat and aerial available online. **Property ID 158**



Directions: From Anderson take Clemson Blvd./Hwy 76 go 11.2 miles, turn left at US-123/US-76 continue to follow SC-28/US-123/US-76 9.1 miles turn right at SC-28 continue to follow SC-28 5.6 miles, take the ramp to N Hwy-11 slight right at N Hwy-11. Property will be on the right. **Watch for signs.**

Auction
SERVICES. LTD
J. M. Johnson, CAI.
AUCTIONEER ♦ SCAL 1695
www.auctionexpert.com

Details and all reports available online at www.auctionexpert.com