

# Floor Plan A



**UNIT A NORTH**

HVAC	1,656 sq. ft.
BALCONY	284 sq. ft.
<b>TOTAL</b>	<b>1,940 sq. ft.</b>

**UNIT A WEST**

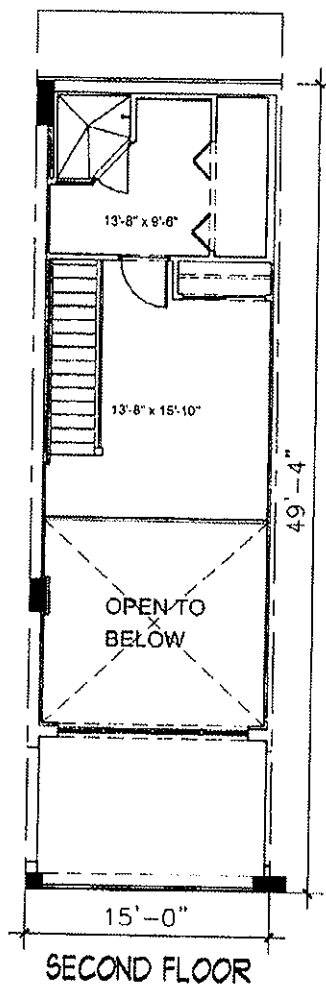
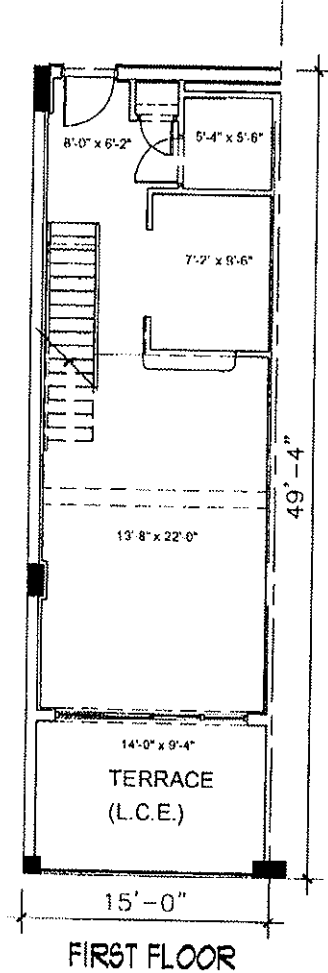
HVAC	1,656 sq. ft.
BALCONY	284 sq. ft.
<b>TOTAL</b>	<b>1,940 sq. ft.</b>

# Floor Plan B



# Floor Plan C





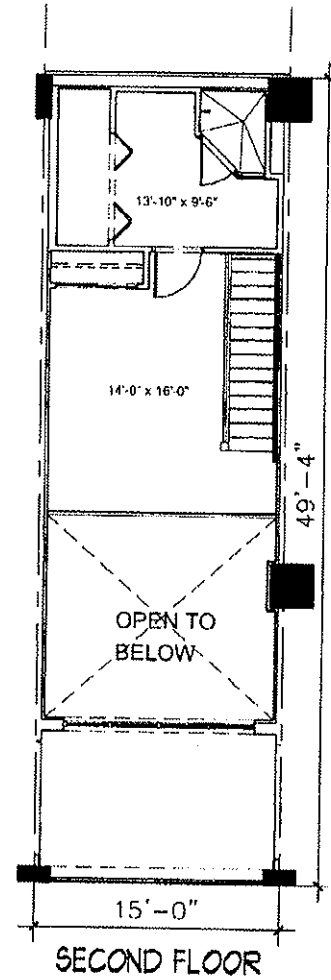
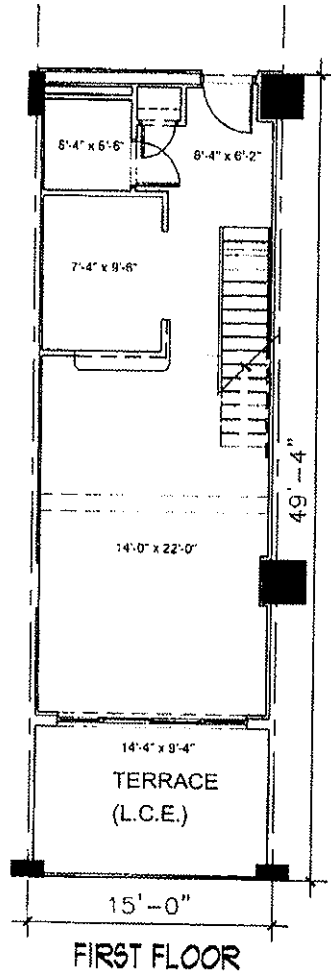
**LEGEND**

- INDICATES STRUCTURAL COLUMN OR SUPPORT
- L.C.E. LIMITED COMMON ELEMENT

**NOTES**

1. ALL DIMENSIONS ARE APPROXIMATE, AND ALL FLOOR PLANS AND DEVELOPMENT PLANS ARE SUBJECT TO CHANGE
2. CHASE AND COLUMNS WITHIN EACH UNIT ARE COMMON ELEMENTS.
3. ALL TERRACES/BALCONIES ARE LIMITED COMMON ELEMENTS.
4. WALLS AND COLUMNS SEPARATING UNITS ARE COMMON ELEMENTS.
5. THIS FLOOR PLAN REPRESENTS THE TYPICAL FLOOR PLAN FOR THE UNIT TYPE INDICATED AND IS PROVIDED FOR INFORMATION PURPOSES ONLY. THE ACTUAL FLOOR PLAN OF THE UNIT MAY DIFFER.
6. THE UPPER AND LOWER BOUNDARY (LIMIT) OF EACH UNIT SHALL BE THE OF THE UNDECORATED UNFINISHED SURFACE OF THE FLOORS AND CEILINGS, LYING WITHIN THE PERIMETRICAL BOUNDARY OF EACH UNIT.
7. THE PERIMETRICAL BOUNDARY OF EACH UNIT SHALL BE THE VERTICAL PLANE OF THE INTERIOR UNDECORATED UNFINISHED SURFACE OF THE WALLS, LYING WITHIN THE UPPER AND LOWER BOUNDARY OF EACH UNIT.
8. THE TERRACES AND BALCONIES AS DESIGNATED IN THIS EXHIBIT ADJACENT TO A UNIT ARE LIMITED COMMON ELEMENTS APPURTENANT TO SAID UNIT.
9. THE BOUNDARY OF EACH TERRACE AND/OR BALCONY IS THE INTERIOR UNDECORATED FINISHED SURFACE OF THE WALLS, RAILINGS, FLOOR AND CEILINGS.





**LEGEND**

- INDICATES STRUCTURAL COLUMN OR SUPPORT
- L.C.E. LIMITED COMMON ELEMENT

**NOTES**

1. ALL DIMENSIONS ARE APPROXIMATE, AND ALL FLOOR PLANS AND DEVELOPMENT PLANS ARE SUBJECT TO CHANGE.
2. CHASE AND COLUMNS WITHIN EACH UNIT ARE COMMON ELEMENTS.
3. ALL TERRACES/ BALCONIES ARE LIMITED COMMON ELEMENTS.
4. WALLS AND COLUMNS SEPARATING UNITS ARE COMMON ELEMENTS.
5. THIS FLOOR PLAN REPRESENTS THE TYPICAL FLOOR PLAN FOR THE UNIT TYPE INDICATED AND IS PROVIDED FOR INFORMATION PURPOSES ONLY. THE ACTUAL FLOOR PLAN OF THE UNIT MAY DIFFER.
6. THE UPPER AND LOWER BOUNDARY (LIMIT) OF EACH UNIT SHALL BE THE OF THE UNDECORATED UNFINISHED SURFACE OF THE FLOORS AND CEILINGS, LYING WITHIN THE PERIMETRICAL BOUNDARY OF EACH UNIT.
7. THE PERIMETRICAL BOUNDARY OF EACH UNIT SHALL BE THE VERTICAL PLANE OF THE INTERIOR UNDECORATED UNFINISHED SURFACE OF THE WALLS, LYING WITHIN THE UPPER AND LOWER BOUNDARY OF EACH UNIT.
8. THE TERRACES AND BALCONIES AS DESIGNATED IN THIS EXHIBIT ADJACENT TO A UNIT ARE LIMITED COMMON ELEMENTS APPURTENANT TO SAID UNIT.
9. THE BOUNDARY OF EACH TERRACE AND/OR BALCONY IS THE INTERIOR UNDECORATED FINISHED SURFACE OF THE WALLS, RAILINGS, FLOOR AND CEILINGS.

0 4' 8' 16'



GRAPHIC SCALE



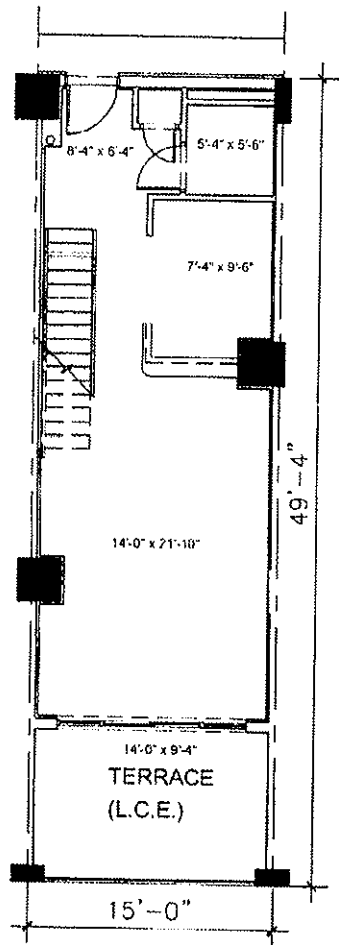
**Fugleberg Koch  
ARCHITECTS**

DATE: 4/5/05

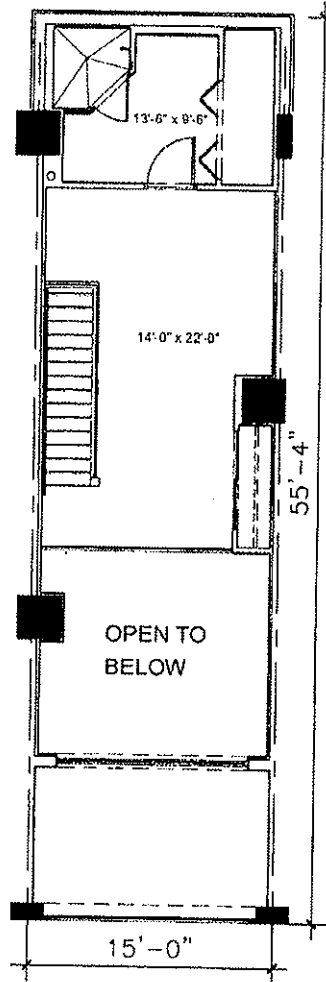
RIVIERA, A CONDOMINIUM

UNIT L2

**EXHIBIT "F"**  
SHEET 22 OF 28



FIRST FLOOR



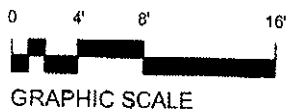
SECOND FLOOR

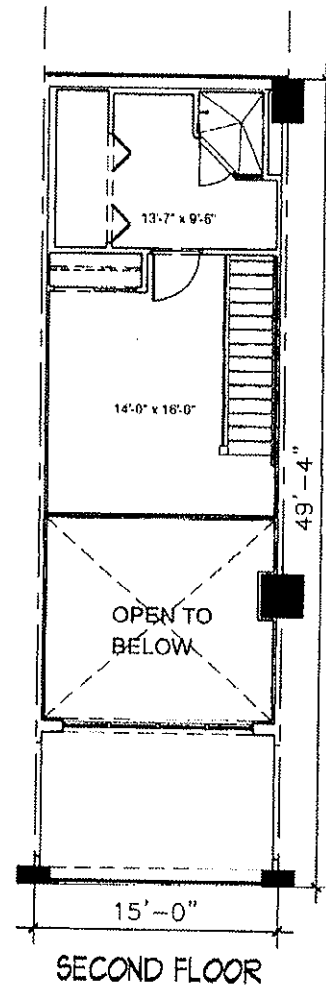
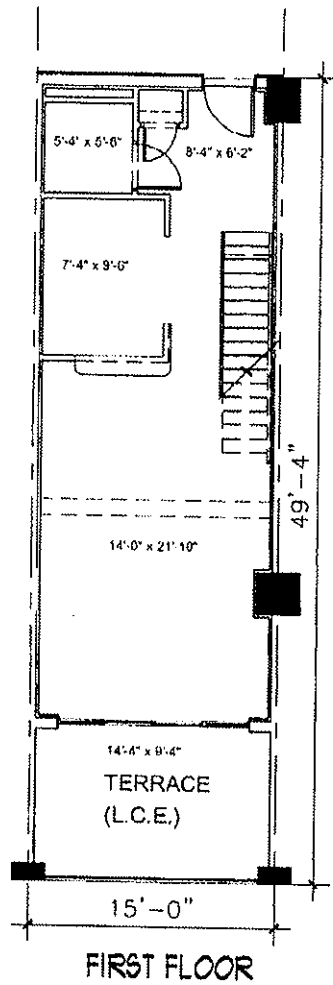
**LEGEND**

- INDICATES STRUCTURAL COLUMN OR SUPPORT
- L.C.E. LIMITED COMMON ELEMENT

**NOTES**

1. ALL DIMENSIONS ARE APPROXIMATE, AND ALL FLOOR PLANS AND DEVELOPMENT PLANS ARE SUBJECT TO CHANGE.
2. CHASE AND COLUMNS WITHIN EACH UNIT ARE COMMON ELEMENTS.
3. ALL TERRACES/ BALCONIES ARE LIMITED COMMON ELEMENTS.
4. WALLS AND COLUMNS SEPARATING UNITS ARE COMMON ELEMENTS.
5. THIS FLOOR PLAN REPRESENTS THE TYPICAL FLOOR PLAN FOR THE UNIT TYPE INDICATED AND IS PROVIDED FOR INFORMATION PURPOSES ONLY. THE ACTUAL FLOOR PLAN OF THE UNIT MAY DIFFER.
6. THE UPPER AND LOWER BOUNDARY (LIMIT) OF EACH UNIT SHALL BE THE OF THE UNDECORATED UNFINISHED SURFACE OF THE FLOORS AND CEILINGS, LYING WITHIN THE PERIMETRICAL BOUNDARY OF EACH UNIT.
7. THE PERIMETRICAL BOUNDARY OF EACH UNIT SHALL BE THE VERTICAL PLANE OF THE INTERIOR UNDECORATED UNFINISHED SURFACE OF THE WALLS, LYING WITHIN THE UPPER AND LOWER BOUNDARY OF EACH UNIT.
8. THE TERRACES AND BALCONIES AS DESIGNATED IN THIS EXHIBIT ADJACENT TO A UNIT ARE LIMITED COMMON ELEMENTS APPURTENANT TO SAID UNIT.
9. THE BOUNDARY OF EACH TERRACE AND/OR BALCONY IS THE INTERIOR UNDECORATED FINISHED SURFACE OF THE WALLS, RAILINGS, FLOOR AND CEILINGS.





**LEGEND**

- INDICATES STRUCTURAL COLUMN OR SUPPORT
- L.C.E. LIMITED COMMON ELEMENT

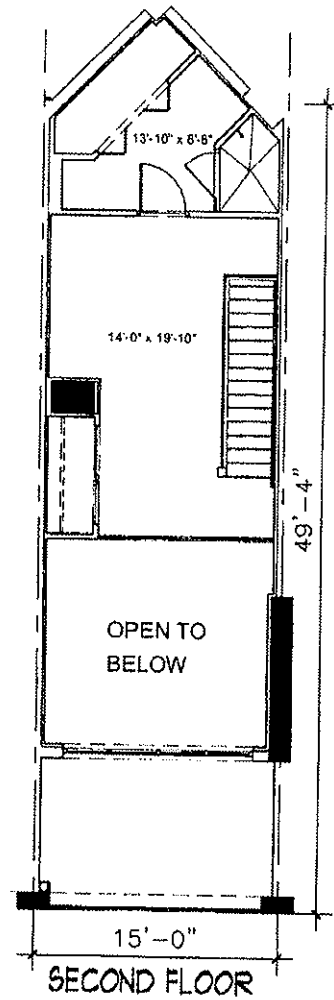
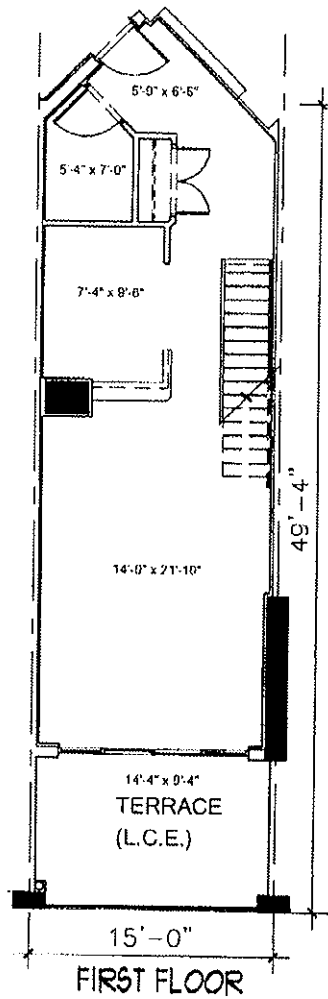
**NOTES**

1. ALL DIMENSIONS ARE APPROXIMATE, AND ALL FLOOR PLANS AND DEVELOPMENT PLANS ARE SUBJECT TO CHANGE.
2. CHASE AND COLUMNS WITHIN EACH UNIT ARE COMMON ELEMENTS.
3. ALL TERRACES/ BALCONIES ARE LIMITED COMMON ELEMENTS.
4. WALLS AND COLUMNS SEPARATING UNITS ARE COMMON ELEMENTS.
5. THIS FLOOR PLAN REPRESENTS THE TYPICAL FLOOR PLAN FOR THE UNIT TYPE INDICATED AND IS PROVIDED FOR INFORMATION PURPOSES ONLY. THE ACTUAL FLOOR PLAN OF THE UNIT MAY DIFFER.
6. THE UPPER AND LOWER BOUNDARY (LIMIT) OF EACH UNIT SHALL BE THE OF THE UNDECORATED UNFINISHED SURFACE OF THE FLOORS AND CEILINGS, LYING WITHIN THE PERIMETRICAL BOUNDARY OF EACH UNIT.
7. THE PERIMETRICAL BOUNDARY OF EACH UNIT SHALL BE THE VERTICAL PLANE OF THE INTERIOR UNDECORATED UNFINISHED SURFACE OF THE WALLS, LYING WITHIN THE UPPER AND LOWER BOUNDARY OF EACH UNIT.
8. THE TERRACES AND BALCONIES AS DESIGNATED IN THIS EXHIBIT ADJACENT TO A UNIT ARE LIMITED COMMON ELEMENTS APPURTENANT TO SAID UNIT.
9. THE BOUNDARY OF EACH TERRACE AND/OR BALCONY IS THE INTERIOR UNDECORATED FINISHED SURFACE OF THE WALLS, RAILINGS, FLOOR AND CEILINGS.

0 4' 8' 16'



GRAPHIC SCALE

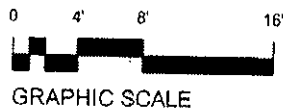


**LEGEND**

- INDICATES STRUCTURAL COLUMN OR SUPPORT
- L.C.E. LIMITED COMMON ELEMENT

**NOTES**

- 1.- ALL DIMENSIONS ARE APPROXIMATE, AND ALL FLOOR PLANS AND DEVELOPMENT PLANS ARE SUBJECT TO CHANGE.
- 2.- CHASE AND COLUMNS WITHIN EACH UNIT ARE COMMON ELEMENTS
- 3.- ALL TERRACES/ BALCONIES ARE LIMITED COMMON ELEMENTS
- 4.- WALLS AND COLUMNS SEPARATING UNITS ARE COMMON ELEMENTS
- 5.- THIS FLOOR PLAN REPRESENTS THE TYPICAL FLOOR PLAN FOR THE UNIT TYPE INDICATED AND IS PROVIDED FOR INFORMATION PURPOSES ONLY. THE ACTUAL FLOOR PLAN OF THE UNIT MAY DIFFER.
- 6.- THE UPPER AND LOWER BOUNDARY (LIMIT) OF EACH UNIT SHALL BE THE OF THE UNDECORATED UNFINISHED SURFACE OF THE FLOORS AND CEILINGS, LYING WITHIN THE PERIMETRICAL BOUNDARY OF EACH UNIT.
- 7.- THE PERIMETRICAL BOUNDARY OF EACH UNIT SHALL BE THE VERTICAL PLANE OF THE INTERIOR UNDECORATED UNFINISHED SURFACE OF THE WALLS, LYING WITHIN THE UPPER AND LOWER BOUNDARY OF EACH UNIT.
- 8.- THE TERRACES AND BALCONIES AS DESIGNATED IN THIS EXHIBIT ADJACENT TO A UNIT ARE LIMITED COMMON ELEMENTS APPURTENANT TO SAID UNIT.
- 9.- THE BOUNDARY OF EACH TERRACE AND/OR BALCONY IS THE INTERIOR UNDECORATED FINISHED SURFACE OF THE WALLS, RAILINGS, FLOOR AND CEILINGS.

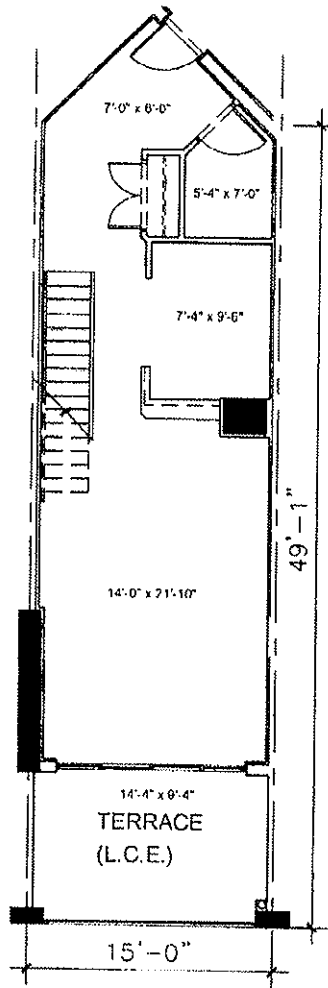


**Fugleberg Koch  
ARCHITECTS**

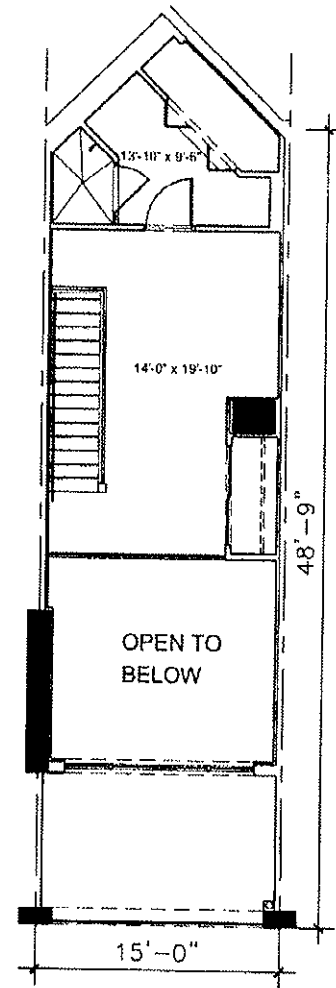
DATE: 4/5/05  
UNIT L6

RIVIERA, A CONDOMINIUM

**EXHIBIT "F"**  
SHEET 25 OF 28



FIRST FLOOR



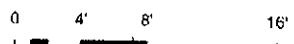
SECOND FLOOR

**LEGEND**

- INDICATES STRUCTURAL COLUMN OR SUPPORT
- L.C.E. LIMITED COMMON ELEMENT

**NOTES**

1. ALL DIMENSIONS ARE APPROXIMATE, AND ALL FLOOR PLANS AND DEVELOPMENT PLANS ARE SUBJECT TO CHANGE.
2. CHASE AND COLUMNS WITHIN EACH UNIT ARE COMMON ELEMENTS.
3. ALL TERRACES/ BALCONIES ARE LIMITED COMMON ELEMENTS.
4. WALLS AND COLUMNS SEPARATING UNITS ARE COMMON ELEMENTS.
5. THIS FLOOR PLAN REPRESENTS THE TYPICAL FLOOR PLAN FOR THE UNIT TYPE; INDICATED AND IS PROVIDED FOR INFORMATION PURPOSES ONLY. THE ACTUAL FLOOR PLAN OF THE UNIT MAY DIFFER.
6. THE UPPER AND LOWER BOUNDARY (LIMIT) OF EACH UNIT SHALL BE THE OF THE UNDECORATED UNFINISHED SURFACE OF THE FLOORS AND CEILINGS, LYING WITHIN THE PERIMETRICAL BOUNDARY OF EACH UNIT.
7. THE PERIMETRICAL BOUNDARY OF EACH UNIT SHALL BE THE VERTICAL PLANE OF THE INTERIOR UNDECORATED UNFINISHED SURFACE OF THE WALLS, LYING WITHIN THE UPPER AND LOWER BOUNDARY OF EACH UNIT.
8. THE TERRACES AND BALCONIES AS DESIGNATED IN THIS EXHIBIT ADJACENT TO A UNIT ARE LIMITED COMMON ELEMENTS APPURTENANT TO SAID UNIT.
9. THE BOUNDARY OF EACH TERRACE AND/OR BALCONY IS THE INTERIOR UNDECORATED FINISHED SURFACE OF THE WALLS, RAILINGS, FLOOR AND CEILINGS.



GRAPHIC SCALE

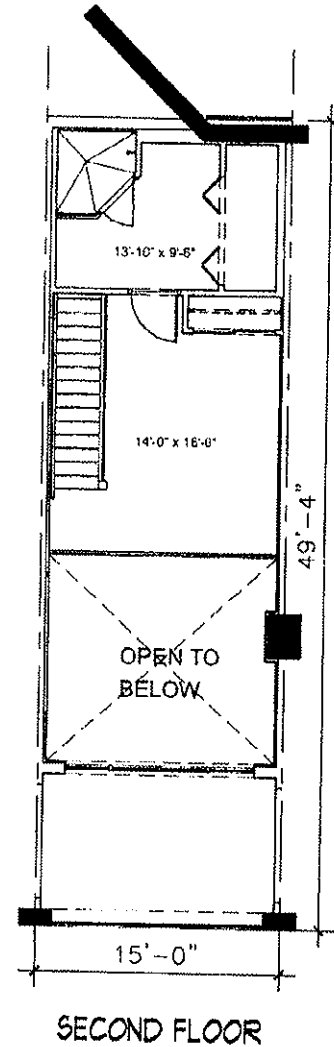
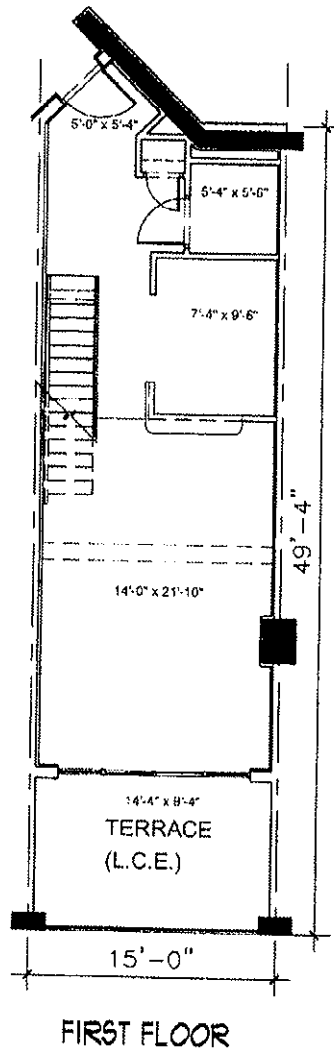


**Fugleberg Koch  
ARCHITECTS**

DATE: 4/5/05  
UNIT L7

RIVIERA, A CONDOMINIUM

**EXHIBIT "F"**  
SHEET 26 OF 28

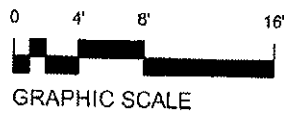


**LEGEND**

- INDICATES STRUCTURAL COLUMN OR SUPPORT
- (L.C.E.) LIMITED COMMON ELEMENT

**NOTES**

- 1- ALL DIMENSIONS ARE APPROXIMATE, AND ALL FLOOR PLANS AND DEVELOPMENT PLANS ARE SUBJECT TO CHANGE.
- 2- CHASE AND COLUMNS WITHIN EACH UNIT ARE COMMON ELEMENTS.
- 3- ALL TERRACES/ BALCONIES ARE LIMITED COMMON ELEMENTS.
- 4- WALLS AND COLUMNS SEPARATING UNITS ARE COMMON ELEMENTS.
- 5- THIS FLOOR PLAN REPRESENTS THE TYPICAL FLOOR PLAN FOR THE UNIT TYPE INDICATED AND IS PROVIDED FOR INFORMATION PURPOSES ONLY. THE ACTUAL FLOOR PLAN OF THE UNIT MAY DIFFER.
- 6- THE UPPER AND LOWER BOUNDARY (LIMIT) OF EACH UNIT SHALL BE THE OF THE UNDECORATED UNFINISHED SURFACE OF THE FLOORS AND CEILINGS, LYING WITHIN THE PERIMETRICAL BOUNDARY OF EACH UNIT.
- 7- THE PERIMETRICAL BOUNDARY OF EACH UNIT SHALL BE THE VERTICAL PLANE OF THE INTERIOR UNDECORATED UNFINISHED SURFACE OF THE WALLS, LYING WITHIN THE UPPER AND LOWER BOUNDARY OF EACH UNIT.
- 8- THE TERRACES AND BALCONIES AS DESIGNATED IN THIS EXHIBIT ADJACENT TO A UNIT ARE LIMITED COMMON ELEMENTS APPURTENANT TO SAID UNIT.
- 9- THE BOUNDARY OF EACH TERRACE AND/OR BALCONY IS THE INTERIOR UNDECORATED FINISHED SURFACE OF THE WALLS, RAILINGS, FLOOR AND CEILINGS.



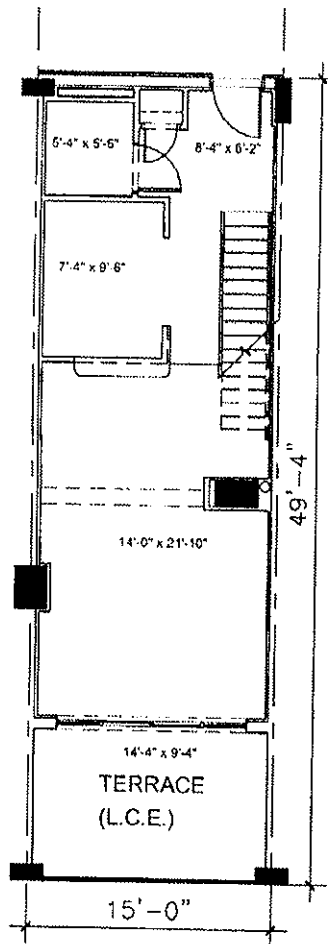
**Fugleberg Koch  
ARCHITECTS**

DATE: 4/5/05

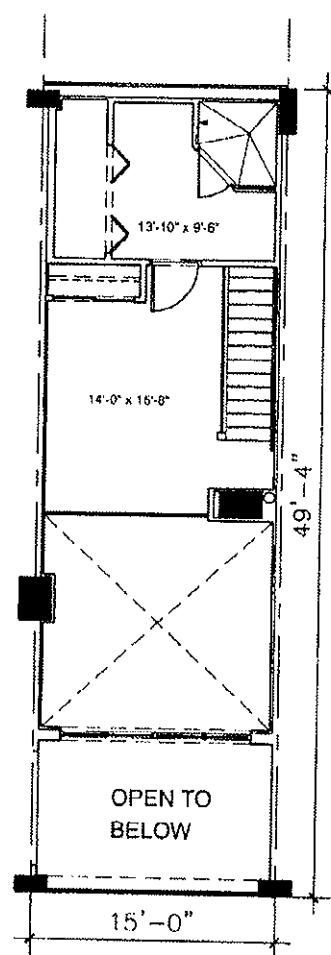
RIVIERA, A CONDOMINIUM

UNIT L8

**EXHIBIT "F"**  
SHEET 27 OF 28



FIRST FLOOR



SECOND FLOOR

**LEGEND**

- INDICATES STRUCTURAL COLUMN OR SUPPORT
- L.C.E. LIMITED COMMON ELEMENT

**NOTES**

1. ALL DIMENSIONS ARE APPROXIMATE, AND ALL FLOOR PLANS AND DEVELOPMENT PLANS ARE SUBJECT TO CHANGE.
2. CHASE AND COLUMNS WITHIN EACH UNIT ARE COMMON ELEMENTS.
3. ALL TERRACES/ BALCONIES ARE LIMITED COMMON ELEMENTS.
4. WALLS AND COLUMNS SEPARATING UNITS ARE COMMON ELEMENTS.
5. THIS FLOOR PLAN REPRESENTS THE TYPICAL FLOOR PLAN FOR THE UNIT TYPE INDICATED AND IS PROVIDED FOR INFORMATION PURPOSES ONLY. THE ACTUAL FLOOR PLAN OF THE UNIT MAY DIFFER.
6. THE UPPER AND LOWER BOUNDARY (LIMIT) OF EACH UNIT SHALL BE THE OF THE UNDECORATED UNFINISHED SURFACE OF THE FLOORS AND CEILINGS, LYING WITHIN THE PERIMETRICAL BOUNDARY OF EACH UNIT.
7. THE PERIMETRICAL BOUNDARY OF EACH UNIT SHALL BE THE VERTICAL PLANE OF THE INTERIOR UNDECORATED UNFINISHED SURFACE OF THE WALLS, LYING WITHIN THE UPPER AND LOWER BOUNDARY OF EACH UNIT.
8. THE TERRACES AND BALCONIES AS DESIGNATED IN THIS EXHIBIT ADJACENT TO A UNIT ARE LIMITED COMMON ELEMENTS APPURTENANT TO SAID UNIT.
9. THE BOUNDARY OF EACH TERRACE AND/OR BALCONY IS THE INTERIOR UNDECORATED FINISHED SURFACE OF THE WALLS, RAILINGS, FLOOR AND CEILINGS.

0 4' 8' 16'



GRAPHIC SCALE



**Fugleberg Koch  
ARCHITECTS**

DATE: 4/5/05

RIVIERA, A CONDOMINIUM

UNIT L9

**EXHIBIT "F"**  
SHEET 28 OF 28