

**LEGEND**

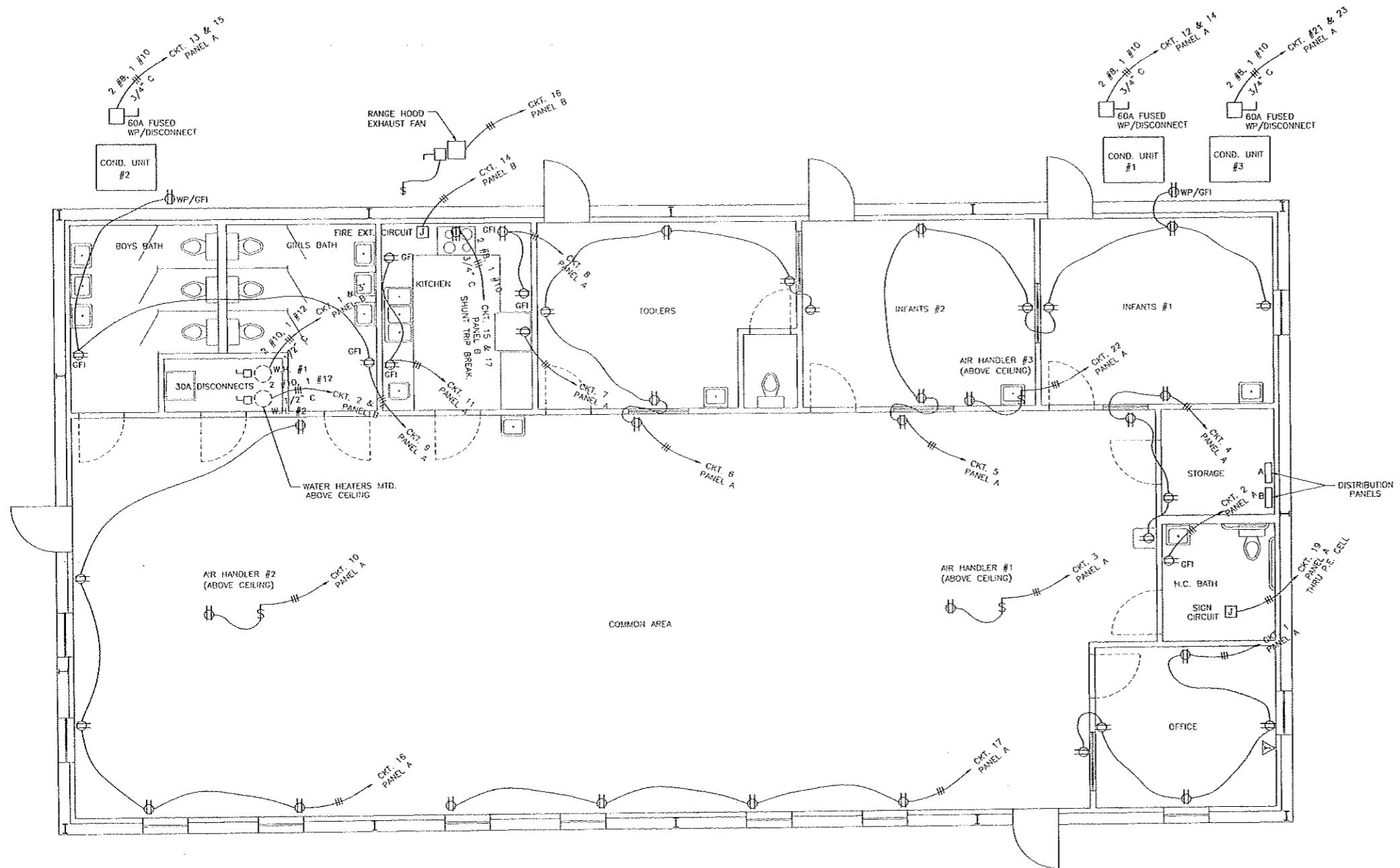
- HORN/STROBE COMBINATION
- MANUAL ALARM PULL STATION
- FIRE & SMOKE DETECTOR (CEILING MOUNT)
- HEAT DETECTOR (CEILING MOUNT)
- END OF LINE RESISTOR
- ALARM BELL ZONE
- FIRE ALARM DETECTION ZONES
- RELAY FOR HVAC SHUT DOWN

**NOTE:**  
 DEVICES MOUNTED IN CEILING ARE SHOWN IN APPROX. LOCATIONS. LIGHT FIXTURES, DIFFUSERS AND RETURNS WILL AFFECT ACTUAL LOCATION.

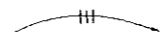



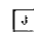
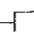


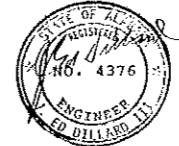
10.28.99

<b>GENESIS CONSTRUCTION COMPANY, INC.</b>		
1302 INDUSTRIAL DR. S.E. HARTSELLE, ALABAMA 36640		
SCALE 1/4" = 1'-0"	PROJECT NO.	DRAWN BY J. FAR...
DATE 8-24-99		CHECKED BY
PROJECT NAME <b>CULBERSON - DAY CARE FACILITY</b>		
DETAIL	<b>FIRE PROTECTION</b>	DRAWING NUMBER <b>E-3</b>



**LEGEND**

- 
 INDICATES HOME RUN, #12 AWG CONDUCTORS AND A GND. IN 1/2" CONDUIT UNLESS NOTED OTHERWISE
- 
 110v DUPLEX OUTLET
- 
 220v OUTLET
- 
 TELEPHONE CONNECTION 3/4" CONDUIT STUBBED OUT ABOVE CEILING
- 
 JUNCTION BOX
- 
 DISCONNECT



10-26-97

<b>GENESIS CONSTRUCTION COMPANY, INC</b>		(205) 751-0888
1302 INDUSTRIAL DR. S.E.		FAX (205) 751-0888
HARTSELLE, ALABAMA 36840		
SCALE 1/4" = 1'-0"	PROJECT NO.	DRAWN BY J. FARRELL
DATE 9-29-99		CHECKED BY
PROJECT NAME		
<b>CULBERSON - DAY CARE FACILITY</b>		
DETAIL	DRAWING NUMBER	
<b>ELECTRICAL - OUTLETS, MISC.</b>	<b>E-2</b>	

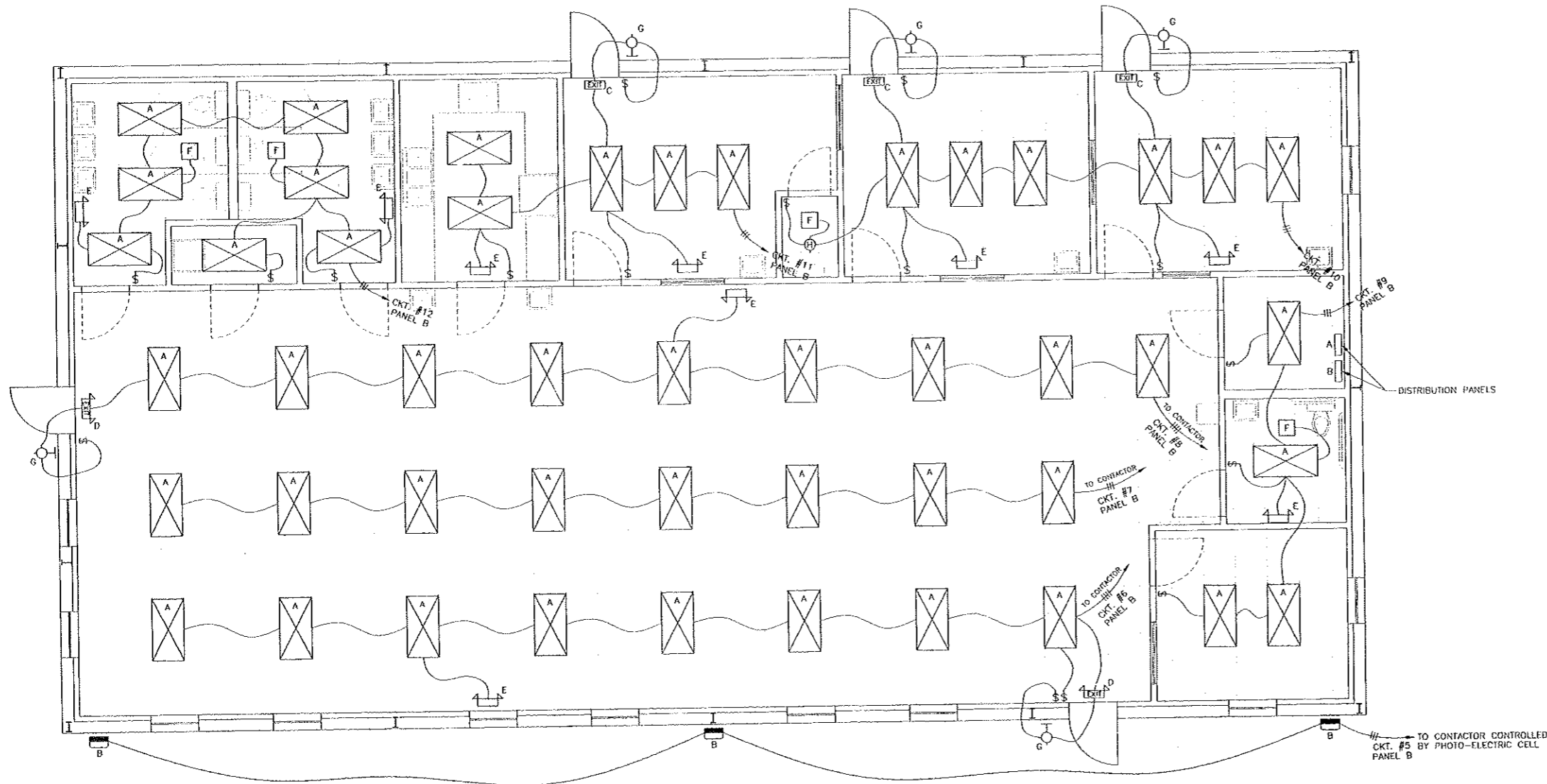
PANEL SCHEDULE 'A'

LOAD SERVED	VA	CKT	AMPS	AMPS	CKT	VA	LOAD SERVED
OFFICE RECEPT.	900	1	20	20	2	180	H.C. BATH GFI
AIR HANDLER #1	1440	3	20	20	4	1020	DRINKING FOUNTAIN
RECEPT. INF. 1 & 2	1260	5	20	20	6	1080	RECEPT. TODDLERS
REFRIGERATOR	1080	7	20	20	8	360	KITCHEN GFI
BATH GFI	360	9	20	20	10	1440	AIR HANDLER #2
KITCHEN GFI	360	11	20	50/2	12	2760	COND. UNIT #1
COND. UNIT #2	2760	13	50/2	20	14	2760	RECEPT. COMMON AREA
	2760	15	50/2	20	18	900	TVSS
RECEPT. COMMON AREA	720	17	20	30/2	20		
SIGN CIRCUIT	1200	19	20	20	22	1440	AIR HANDLER #3
COND. UNIT #3	2760	21	50/2	20	22		
		23	50/2		24		
		25			26		
		27			28		
		29			30		
		31			32		
		33			34		
		35			36		
		37			38		
		39			40		
		41			42		

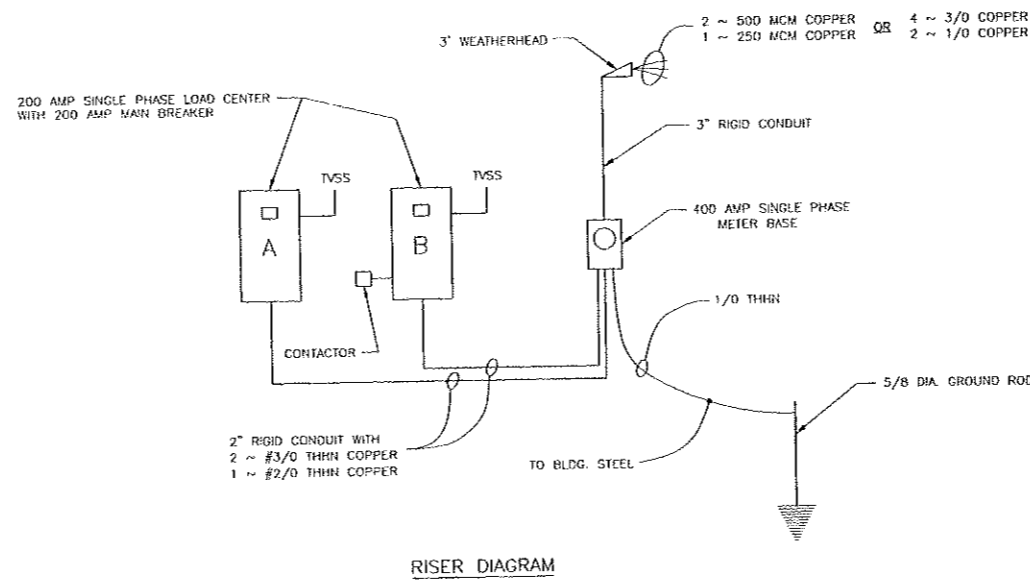
PANEL SCHEDULE 'B'

LOAD SERVED	VA	CKT	AMPS	AMPS	CKT	VA	LOAD SERVED
WATER HEATER	2250	1	30/2	30/2	2	2250	WATER HEATER
	2250	3			4	2250	
OUTSIDE LIGHTS	660	5	20	20	6	1200	LIGHTS-COMMON AREA
LIGHTS-COMMON AREA	1200	7	20	20	8	1520	LIGHTS-COMMON AREA
OFFICE/STORAGE LIGHTS	750	9	20	20	10	1400	INFANTS 1 & 2
LIGHTS-KIT. & TODDLER	1100	11	20	20	12	1400	BATH LIGHTS
FIRE ALARM CONTROL	600	13	20	20	14	100	FIRE EXT. SYSTEM
RANGE	4000	15	50/2	20	16	700	RANGE EXHAUST FAN
	4000	17	50/2	30/2	18		TVSS
		19			20		
		21			22		
		23			24		
		25			26		
		27			28		
		29			30		
		31			32		
		33			34		
		35			36		
		37			38		
		39			40		
		41			42		

\* SHUNT TRIP BREAKER CONTROLLED BY FIRE EXTINGUISHER SYSTEM

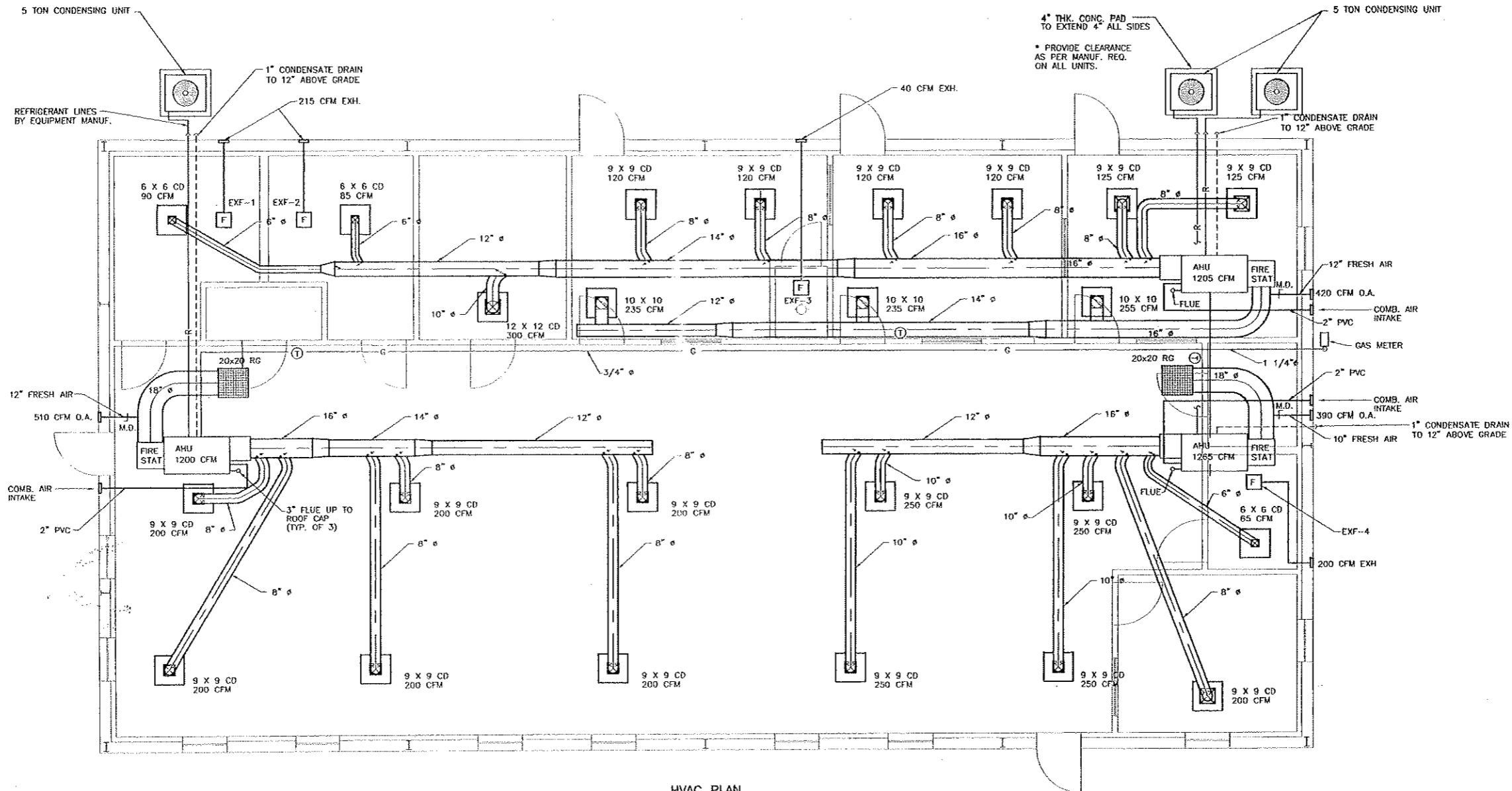


FIXTURE SCHEDULE		
MK	MAKE	DESCRIPTION
A	COLUMBIA	#FFC2X4L14LP WITH (4) 34 WATT LAMPS (2 X 4 RECESSED TROFFER - FLUORESCENT)
B	G.E.	#WM7MOA WITH 175 WATT LAMP (175 WATT METAL HALIDE WALL PACK)
C	PRESCOLITE	#EX3REMFA EXIT LIGHT
D	PRESCOLITE	#EDX4R WH EXIT/EMER. COMB. LIGHT
E	PRESCOLITE	#E0S2 EMERGENCY LIGHT
F	BROAN	#676 BATH FAN, 100 C.F.M.
G	PROGRESS	#5602-31 WALL MOUNTED EXTERIOR FIXTURE
H	PROGRESS	3605-11 CEILING MTD. GLOBE FIXTURE

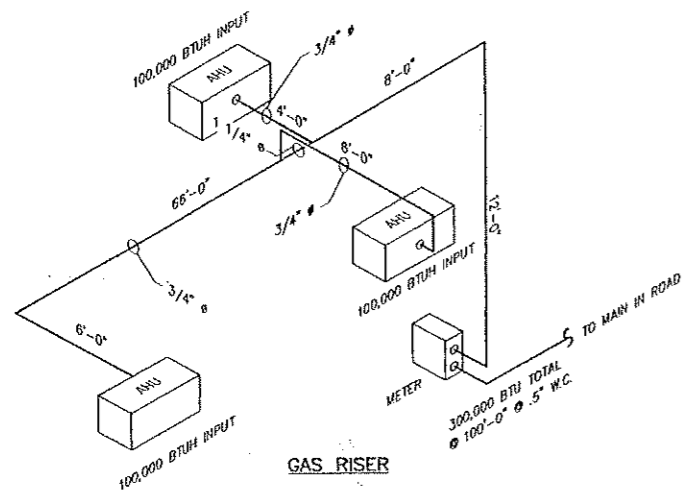


**GENESIS CONSTRUCTION COMPANY, INC.**  
 1302 INDUSTRIAL DR. S.E.  
 HARTSELLE, ALABAMA 36640  
 (205) 761-0888  
 FAX (205) 761-0888

SCALE: 1/4" = 1'-0" PROJECT NO. DATE: 6-20-99  
 DRAWN BY: J. FA. CHECKED BY:  
 PROJECT NAME: **CULBERSON - DAY CARE FACILITY**  
 DETAIL: **ELECTRICAL - LIGHTING** DRAWING NUMBER: **E-1**



HVAC PLAN  
SCALE: 1/4"=1'-0"



NOTES:

- COORDINATE HVAC WORK WITH ELECTRICAL CONTRACTOR
- PROVIDE COMBUSTION AIR IN FURNACE SPACE AS PER SBCCI.
- RIGID DUCT TO BE SMACNA STANDARD WITH 2" INSULATION
- ALL RUN-OUTS TO BE RIGID DUCT WITH 2" EXTERNAL INSULATION
- INSTALL METAL DRIP PAN UNDER AIR HANDLER UNIT WITH 1" DRAIN AS SHOWN, WITH EMERGENCY DRAIN TO SPLASHBLOCK.
- UNDERCUT ALL RESTROOM DOORS 1"
- SUPPORT DUCTWORK, REFRIGERANT LINES AND AHU UNITS AS PER SBCCI CODES AND SMACNA STANDARDS.
- VERIFY MOUNTING HEIGHT OF O.A. GRILLES AND EXHAUST GRILLES WITH BUILDING CONTRACTOR.

EQUIPMENT

- EXF-1, 2 & 4 "COOK" GEMINI 5-10, 81 WATTS 1050 RPM 215 CFM @ .22" S.P., 115/1/60, PROVIDE: WALL CAP, 4 1/2" X 14" DUCT SIZE, INTERLOCK FAN W/LIGHTS.
- EXF-3 "COOK" LITTLE GEM-1, 29 WATTS, 1200 RPM 44 CFM @ .2" S.P., 115/1/60, PROVIDE: WALL GAP 3 1/2" X 10 1/4" DUCT SIZE, INTERLOCK FAN W/LIGHTS.
- AHU "TRANE" TUX100C960 HORIZONTAL FURNACE WITH 2" PVC COMBUSTION AIR INTAKE AND 3" FLUE, TXC061 COIL, TTA050 CONDENSING UNIT; 230/3/60, MIN. BKR. = 24 AMPS, BR. CIRC./MAX. AMP.=40/35, INSTALL COMBUSTION AIR AND FLUE AS PER MANUF. REQ., GAS INPUT= 100,00 BTUH, 3/4 HP. BLOWER, 115/1/60, 16 AMPS, 20 AMP FUSE, (PROVIDE O.A. INTO RETURN DUCT WITH 10'-0" CLEAR FROM ANY EXHAUST FAN OR FLUE).
- CD CEILING DIFFUSER "TRUS" MODEL TDC-AA, ALUMINUM CONSTRUCTION WITH OPPOSED BLADE DAMPER, ROUND NECK, WITH 24x24 LAY-IN BORDER.
- RG RETURN GRILLE "TRUS" MODEL 50FF, ALUMINUM CONSTRUCTION, 1/2"x1/2"x1/2" GRID, FILTER RETURN, SEE DWG. FOR SIZE WITH 24x24 LAY-IN BORDER.



PREPARED BY: **Cornerstone Engineering Group, p.c.**

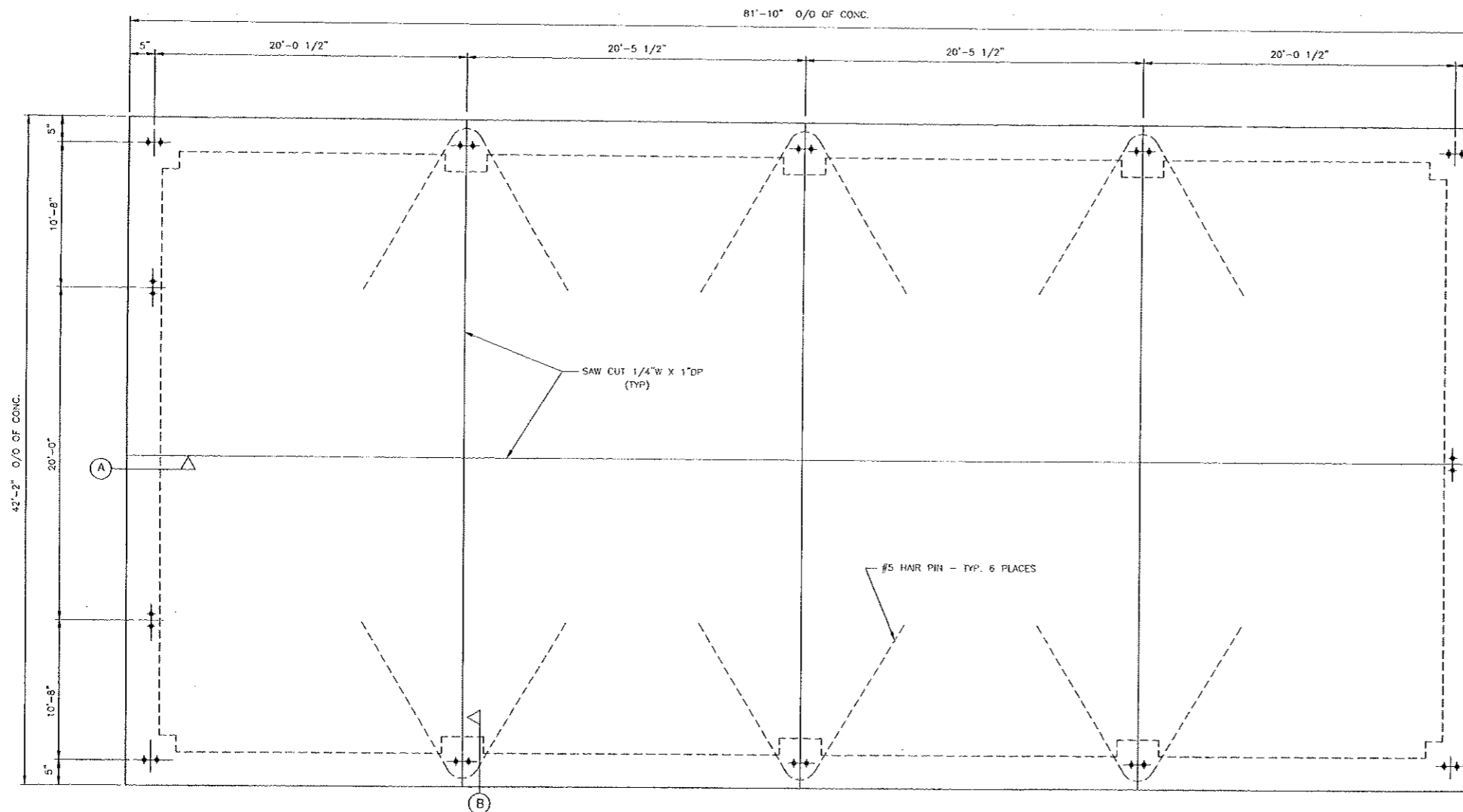
1802 GARDEN ST. SE  
DOTHAN, ALABAMA 36024  
(205) 381-1225  
FAX (205) 381-5000

2114 EDWIN STREET  
TUSCALOOSA, ALABAMA  
(205) 543-4102  
FAX (205) 243-4400

SCALE: 1/4"=1'-0"	DWG. NO.	CHK.	HSS.
FILE: HVAC-01	PROJ: 99-180	DATE: 8-24-99	SHEET

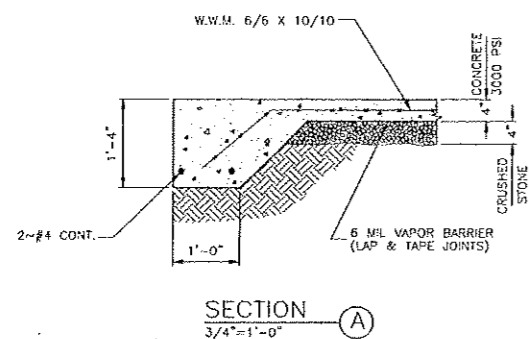
**GENESIS CONSTRUCTION COMPANY,**  
1302 INDUSTRIAL DR. S.E.  
HARTSELLE, ALABAMA 35840  
SCALE 1/4" = 1'-0" PROJECT NO.  
DATE 6-20-99

DRAWN BY J  
CHECKED BY  
PROJECT NAME  
**CULBERSON - DAY CARE FACILI**  
DETAIL  
**H V A C**  
DRAWING NO.  
**M-**

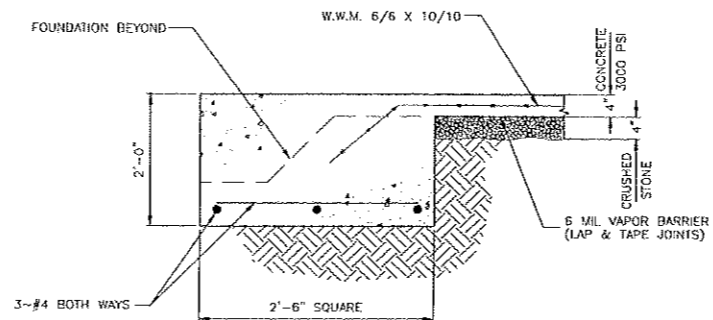


PLAN  
1/4"=1'-0"

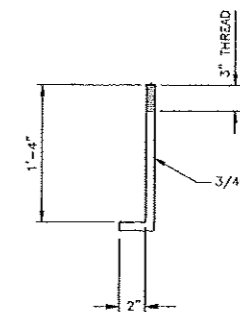
NOTE  
SEE METAL BLDG. MFG. DWGS. FOR  
ALL INFORMATION NOT SHOWN



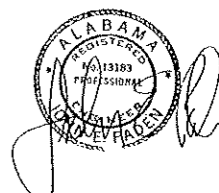
SECTION A  
3/4"=1'-0"



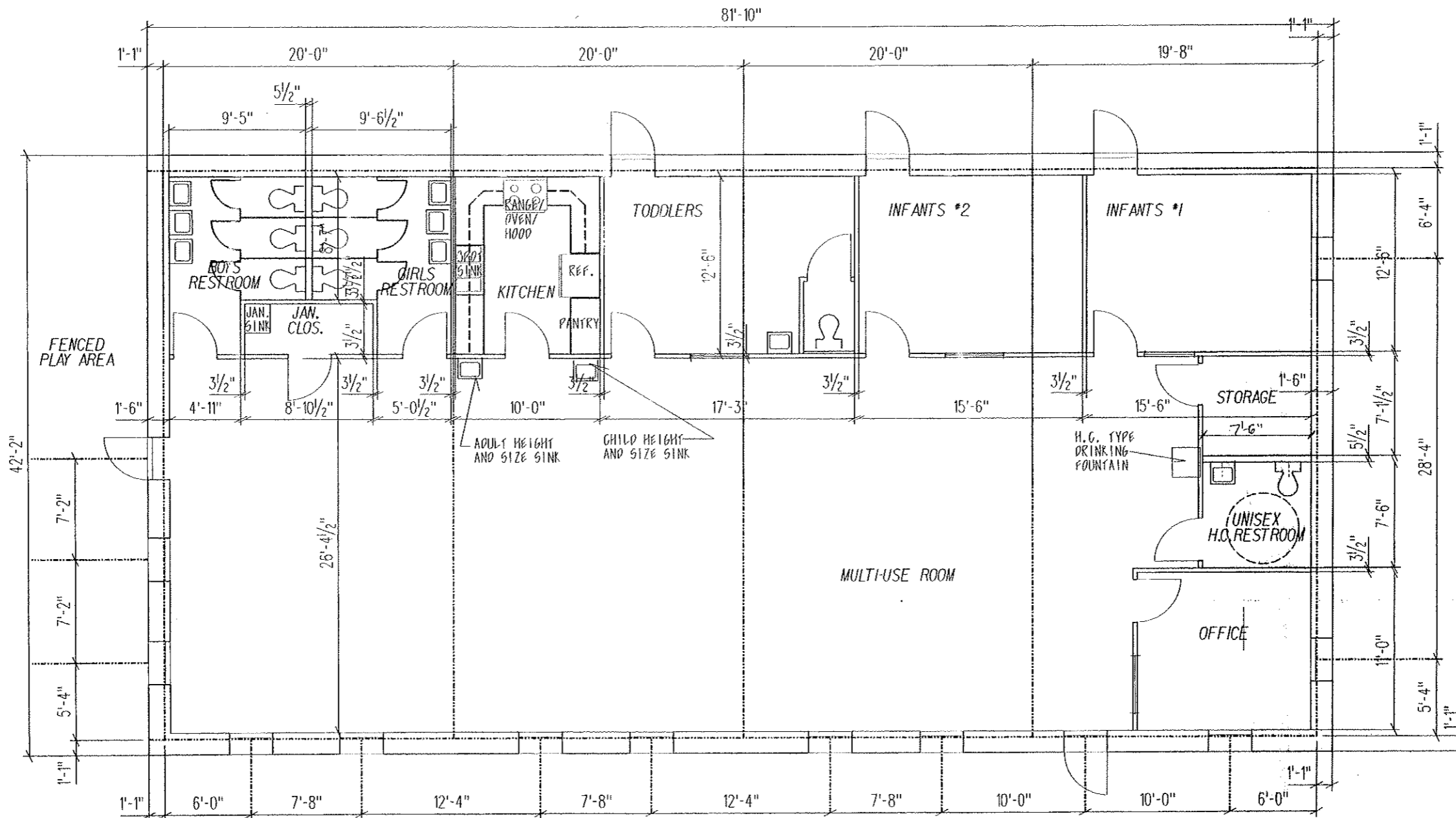
SECTION B  
3/4"=1'-0"



26 ~ REQ'D



GENESIS CONSTRUCTION COMPANY, INC.		
1302 INDUSTRIAL DR. S.E.		
HARTSELLE, ALABAMA 36840		
SCALE	SHOWN	PROJECT NO.
DATE	6-18-89	DRAWN BY J. FARLEY
PROJECT NAME		CHECKED BY
CULBERSON-DAY CARE FACILITY		
DETAIL	FOUNDATION	DRAWING NUMBER
		A-3



NOTES:  
 . ALL WORK SHALL BE DONE IN ACCORDANCE WITH ALL APPLICABLE CODES AND ORDINANCES.  
 . PROVIDE A MINIMUM OF 2 FIRE EXTINGUISHERS FOR THIS BUILDING. ONE SHALL BE IN THE KITCHEN. THE OTHER ONE MUST BE WITHIN 75' OF THE KITCHEN. (DETERMINE EXACT LOCATION IN ACCORDANCE WITH THE ADVICE FROM THE LOCAL FIRE MARSHALL. ALSO SEE FIRE PROTECTION PLAN.)  
 . SEE THE ELECTRICAL DRAWINGS FOR REQUIRED FIRE ALARM SYSTEM, SMOKE ALARM, EXIT LIGHTS AND EMERGENCY LIGHTS.  
 . HARDWARE NOTES: HARDWARE (INTERIOR AND EXTERIOR DOORS) MUST MEET ALL APPLICABLE CODES AND THE A.D.A. REQUIREMENTS ALSO. THE STOR. CLOS. AND JAN. CLOS. DOORS MUST HAVE HARDWARE ALLOWING SOMEONE TO OPEN THE DOORS FROM THE INSIDE WITHOUT A KEY (BHMA F44 FUNCTION). THE KITCHEN DOOR SHALL ALSO BE BHMA F44 FUNCTION LOCKSET. INTERIOR CLASSROOM DOORS TO HAVE PASSAGE SETS (BHMA F36). THESE DOORS ARE TO REMAIN UNLOCKED WHILE CENTER IS OPEN AND OCCUPIED. EXTERIOR CLASSROOM DOORS SHALL HAVE BHMA 40 FUNCTION ENTRANCE LOCK, CLOSER, AND DEADBOLT. OFFICE DOOR SHALL HAVE BHMA 40 FUNCTION ENTRANCE LOCK.  
 . DOORS WITH GLASS SHALL HAVE INSULATED TEMPERED GLASS. WINDOWS SHALL MEET ALL CODE REQUIREMENTS AS TO WHICH ONES (IF ANY REQUIRED) TEMPERED GLASS.  
 . REFER TO METAL BUILDING DRAWINGS FOR EXTERIOR OF BUILDING AND FOR COLUMN LAYOUTS.  
 . REFER TO THE PLOT PLAN/SITE PLAN FOR AREA DESIGNATED TO BE EXTERIOR, FENCED PLAY AREA. ALSO REFER TO IT FOR SIDEWALKS AND HANDICAPPED RAMP(S) FOR THIS

NOTES:  
 . SINCE THERE ARE DOORS FROM EACH CHILDREN'S AREA DIRECTLY TO THE EXTERIOR AND SINCE THE KITCHEN WILL ONLY HAVE A LIMITED AMOUNT OF COOKING IN IT, THERE IS NO REQUIREMENT FOR ANY WALLS TO BE RATED.  
 . PROVIDE GRAB BARS & TOILET ACCESSORIES FOR H.C. RESTROOM AS PER A.D.A. REQUIREMENTS. THE BOYS' AND GIRLS' RESTROOMS AND THE RESTROOM IN THE TODDLER ROOM SHALL HAVE CHILD SIZED SINKS AND WATER CLOSETS.  
 . THE DAY CARE CENTER SHALL PROVIDE ALL EQUIPMENT AS PER THE "MIN. STANDARDS FOR DAY CARE CENTERS AND NIGHTTIME CENTERS" PUBLISHED BY THE STATE OF ALABAMA DEPT. OF HUMAN RESOURCES. ACCORDING TO THE REQUIREMENTS OF 32 S.F. OF PLAY AREA PER CHILD THE FOLLOWING ROOMS CAN HAVE THESE AMOUNT OF CHILDREN: THE INFANTS 1 ROOM, INFANTS 2 ROOM, AND TODDLERS ROOM CAN ALL HAVE 6 CHILDREN PER ROOM. THE MULTI-USE ROOM MAY HAVE 56 CHILDREN IN THAT ROOM.

FLOOR PLAN  
 SCALE: 1/4" = 1'-0"



CULBERSON-DAY CARE FACILITY  
 HARTSELLE, ALABAMA

ANITA DENSON - ARCHITECT . 307 CANAL ST. N.E. DECATUR, AL. PHONE: 256-350-9500 FAX: 256-351-1910 designfirmnet-master.net

SHEET TITLE	
FLOOR PLAN	
DATE	DRAWN BY
7-9-99	
REVISIONS	
SHEET	OF
A1	1
PROJECT NO. 99017	

