

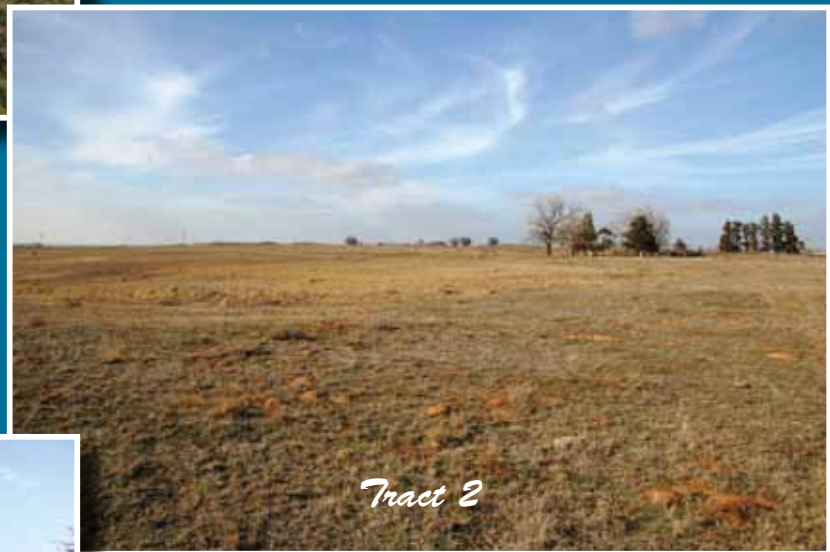
Auction

Saturday ~ March 17

Land Sells at 10:00 A.M.
Equipment Following



Tract 1



Tract 2



Tract 3

Seller: Mrs. David (Donna) Mogg

*240 +/- Acres of Farm and Grassland
Selling in 3 Tracts*

And Excellent Line of Equipment



www.entzauction.com ~ 405-663-2200

Roger Entz
Auctioneer/Broker 75020

Allen Entz
Auctioneer/Sales Assoc.

Doug Eichelberger
Auctioneer/Sales Assoc.

Edith Entz
Sales Associate

Carrie Wyatt
Sales Associate

Trisha Chisum
Office Tech.

Jackie Entz
Marketing



ENTZ Auction & Realty
Hydro, OK

Converting Assets to Cash!

AUCTIONEER'S STATEMENT

In order to settle the estate of the late David Mogg, we will be selling the following land and equipment. This line of equipment is well maintained and in good condition. The grassland was not grazed at all last year and is in very good condition for this next growing season. This is your invitation to participate in this auction event on *Saturday, March 17, 2012 at 10:00 A.M.* We hope to see you there!

Entz Auction & Realty

TRACT 1

Location:

From Sickles, OK: 3 miles south on CS 2550, 2 miles west on CR 1170, ¼ mile south on CS 2530.

From Eakly, OK: ½ mile south to Highway 152, 4 miles east, 1½ miles north on CS 2530. Watch for Signs!

Legal: S ½ of the NE ¼, Section 29, T10N, R12W Indian Meridian, Caddo County, OK. Containing 80 (+/-) Acres. Surface Rights Only.



Irrigated Cropland/Grassland!



Blacktop Road!



This 80 acre tract of land contains 73.6 acres of cropland with the balance in waterways and grass areas. FSA records show a wheat base of 36.8 acres and an average yield of 32 Bu/A. This tract is currently in improved grasses. The grass was not grazed during the last year and is in good condition. This farm has an irrigation system consisting of a 6" turbine pump, a Randolph 75HP 5:4 gearhead and a Chevy 292 engine. The farm has good access with ¼ mile frontage on a county blacktop road (CS 2530).

This irrigated tract offers tremendous potential for both the livestock producer or for crop production!

Live Online Bidding Powered By: **proxibid**

TRACT 2



Blacktop Road!



Potential Homesites!

Location:

From Sickles, OK: 3 miles south on CS 2550, 2 miles west on CR 1170, ½ mile south on CS 2530.

From Eakly, OK: ½ mile south to Highway 152, 4 miles east, 1¼ miles north on CS 2530. Watch for Signs!

Legal: N ½ of the SE ¼, Section 29, T10N, R12W Indian Meridian, Caddo County, OK. Containing 80 (+/-) Acres. Surface Rights Only.

This tract is currently in native and improved grasses. FSA records indicate 63.2 acres of cropland with the balance in wooded areas. This farm was not grazed in the 2011. Other improvements include a livestock corral, stock well and tank and an irrigation well. The irrigation well does not have a pump in the hole. County road CS2530 is a blacktop road which provides great access and ¼ mile frontage.

This tract is well suited for a homesite with a view and/or livestock production!

TRACT 3

Location:

From Sickles, OK: 3 miles south on CS 2550, ¾ miles west on CR 1170.

From Eakly, OK: ½ mile south to Highway 152, 4 miles east, 2 miles north on CS 2530, 1 mile east on CR 1170. Watch for Signs!

Legal: W ½ of the NW ¼, Section 27, T10N, R12W Indian Meridian, Caddo County, OK. Containing 80 (+/-) Acres. Surface Rights Only.

Livestock Producers Opportunity!



Stock Pond!

This parcel of land is cross fenced and has been used in a rotational grazing cattle operation. The tract is currently in native, Bermuda and Love grass. This parcel is cross-fenced and each pasture shares a common corral and load out facility. A pond provides water for the livestock. This pasture did not have cattle in it in 2011.

80 acres offering tremendous potential for the livestock producer!

Auction Location:

From Sickles, OK: 4 miles south on CS 2550

From Eakly, OK: ½ mile south, 6 miles east on Highway 152 to CS 2550, 1 mile north

Tractors & Tillage

1990 Ford 8630, FWA, C&A, Powershift, 3 Pt., PTO, 18.4x38, 4 Hyd., Shows 7,628 Hrs., SN: A926060 or 4996060

1979 Ford 7700, C&A, 16 Spd., Dual Power, 3 Pt., PTO, 2 Hyd., 18.4x34, Shows 5,353 Hrs., SN: C615222

1977 Ford 7700, C&A, 16 Spd., Dual Power, 3 Pt., PTO, 2 Hyd., 18.4x34, Shows 4,874 Hrs., SN: C521898

JD 7200 8 Row Vacuum Planter, 36" Spacing, PTO/Hyd. Drive, Insecticide Boxes, Various Plates

2 – CB 20' Springtooths, 2 & 3 Row, Harrows

CB 12' Offset Disc

Tuffline 10' Tandem Disc

JD 8000 Grain Drill, 7 ½ x 21, SD, Drags

Rhino 10' Offset Disc, Model 127

Rhino TW 96 8' Rotary Mower, PT

JD 8-16 Grain Drill, Silver Box, SD



Vehicles

2005 Ford F350, Powerstroke Turbo Dsl., 4x4, Auto w/ DewEze 477 Hyd. Hay Bed, Shows 204 K Miles, SN: OSXJ35P05LC70945

2005 Ford F350, Triton 10, 4x4, Auto w/ Butler flatbed, Hyd.

Bale Forks, Shows 156,000 Miles, SN: FDSF35Y45EA37050

1996 Ford F250, V-8, Gas, 4x4, Auto w/ Butler Bale Bed

Livestock & Misc

2006 WW 6'8"x30' GN Stock Trailer, Triple Torsion Axle, Rubber Floor, 4 Compartments

Shopbuilt 6'x20' GN Stock Trailer, Tandem Torsion Axle

Overhead Feed Bin, 2 Compartments, Est. 25T

Speed King 6"x36' Auger, Gas Powered

3 – Pickup Bed Trailers

8'x10' Flatbed Trailer, Tandem Axle

6 Way Tailblade, 7', 3 Pt.

JD 4-16 Moldboard Plow, 3 Pt.

Portable Cube Feeder, 2 Wheel, 12 Volt

4 Wheel Trailer Chassis

Fuel Trailer, 2 Wheel, 110 Gal., 12 Volt

3 – Overhead Fuel Tanks

2 Peanut Sackers, 2 Wheel, 2 & 3 Hole

10 – 10' Cattle Panels

Silver King Portable Cattle Squeeze Chute, Manual, Left Handed

3 Set of Duals: 1 - 18.4x38, 2 - 18.4x34

8' Portable Cattle Feeder

16' Portable Cattle Feeder



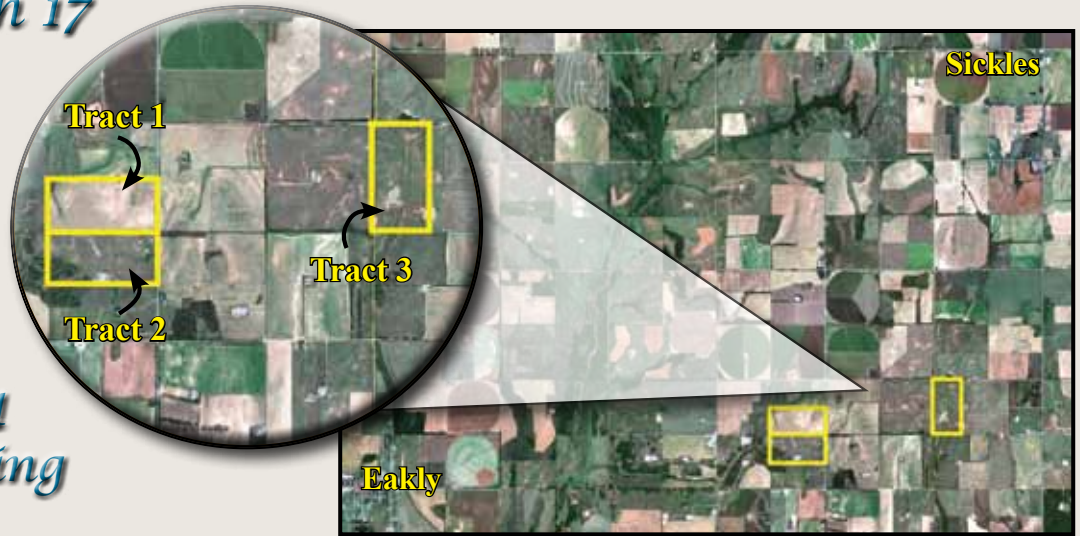
Equipment Available for Preview Onsite and Online after March 3rd



Land & Equipment Auction

Saturday ~ March 17

Online Bidding
Powered by
proxibid



*Land - 10:00 AM
Equipment Following*

Terms & Conditions

Real Estate: 10% of the purchase price of the real estate will be deposited in escrow the day of sale with the balance due upon closing. The Seller will have a reasonable period of time to furnish the abstract. The Buyer will have 15 days to examine the abstract and closing will be within 5 days of acceptance of title. Possession upon closing. Selling surface only. Maps/pictures are for reference only. This property sells subject to confirmation by the Seller.

Equipment: Settlement required on day of auction. Current Oklahoma Agriculture Permit is required or Sales Tax will be charged.

Live Internet Bidding: Real Estate and Equipment will be offered on Proxibid. Must register with proxibid.com 48 hours prior to the auction. 5% Buyers Premium for Equipment. Not responsible for lost signal. Visit proxibid.com for details. Visit entzauction.com for more information.

www.entzauction.com ~ 405-663-2200



Find us on Facebook at:
United Country Entz Auction & Realty

ENTZ Auction & Realty

Rt. 1 Box 47 Hydro, OK 73048
405-663-2200 www.entzauction.com



Roger Entz
Auctioneer/Broker 75020

Doug Eichelberger
Auctioneer/Sales Assoc.

Allen Entz
Auctioneer/Sales Assoc.

Edith Entz
Sales Assoc.

Carrie Wyatt
Sales Assoc.

Trisha Chisum
Office Tech.

Jackie Entz
Marketing



Entz Auction & Realty ~ It's the Right Call!