

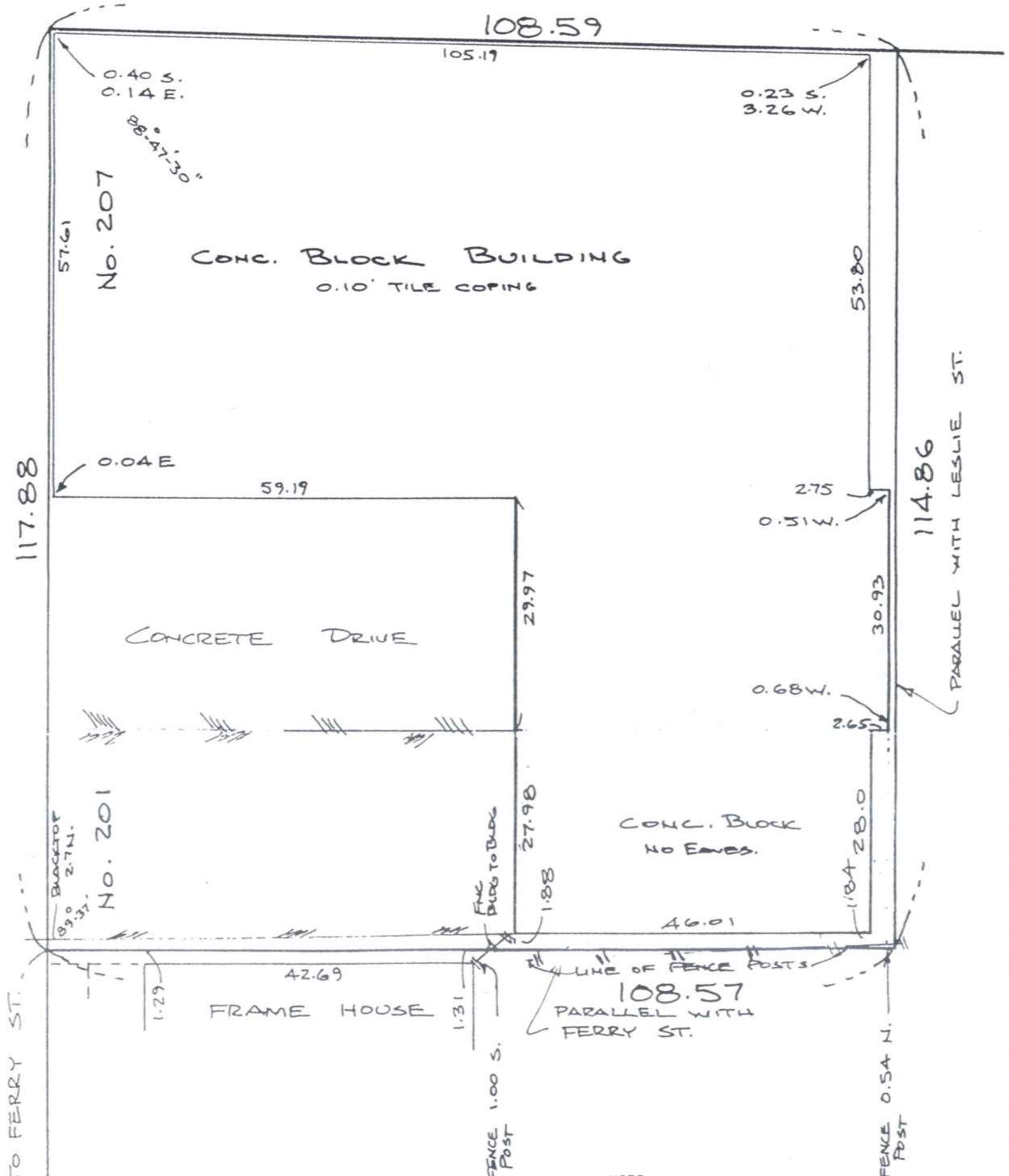
SCAJAQUADA

DRIVE

ST.

(50' WIDE)

LESLIE



50 TO FERRY ST.

117.88

57.61

No. 207

CONC. BLOCK BUILDING
0.10' TILE COPING

108.59

105.19

0.40 S.
0.14 E.

88°-47'-30"

0.23 S.
3.26 W.

53.80

0.04 E

59.19

CONCRETE DRIVE

29.97

2.75
0.51 W.

114.86

PARALLEL WITH LESLIE ST.

0.68 W.

30.93

2.65

BACKSTOP
2.74

No. 201

FINE
DIBS TO BLDG

CONC. BLOCK
NO EAVES.

27.98

1.88

1'84 28.0

46.01

42.69

FRAME HOUSE

FENCE
1.00 S.
POST

LINE OF FENCE POSTS
108.57
PARALLEL WITH
FERRY ST.

FENCE 0.54 N.
POST

NOTE:

UNAUTHORIZED ALTERATION OR AD-