



tin; Stauffer's Nif-ty Pretzel tin; Henry Heide Almond Paste tin; Patuxent Oysters tin; Voigt's Crescent Flour tag, Clabber Girl tag, two embossed tin 10c and 5c tags, tin milk cap;
 Tin Ohio Caverns die cut arrow sign; Winner Plug Tobacco framed label; Dexter Wagons paper sign, framed; tin Crystal Pharmacy die cut arrow sign; Nabisco Shredded Wheat display box; 3 gallon Kelly Straight Wiskies stoneware jug; stoneware jugs, blue stripe w/handle and brown slip; large white enamelware coffeepots; Pinex Cold Tablet tins - NOS; Pinex Laxative tins - NOS; National Biscuit Co. brass front store bin; 2 tin flag holders, 1 tin flag license plate tag; homemade preserves stoneware crock; 1958 Ramon's calendar; NOS Fels Naptha tin sign; Tasti-Toasted Bread cardboard sign; cardboard advertising broom holders; motorcycle races paper broadside; wooden store barrel; red scale w/tray (no weights); Columbus Gumball Machine - silver; Advance Gumball Machine - football globe; die cut cardboard Schaefer Hat signs; 50 lb. Welland Lard tin; Sturgis Pretzels tin; Partridge 50 lb. Lard tin; Salve display boxes; Nichol Kola tin sign - NOS; Hygrade Soap boxes; 1 wood yellow Coca-Cola bottle carton, 1 cardboard NOS Coca-Cola carton; Old Honesty cardboard boxes; Rose Brand 50 lb. lard tin; Butternut Bread sign, framed; 20 Mule Team Borax wood box; White Owl framed sign; Mail Pouch store bin; Just Suits Cut Plug Tobacco tin; George Washington Cut Plug Tobacco tin; Union Leader Pocket Tobacco tins; round Union Leader Tobacco tins;
 Handmade Stogie Panetelas tin; Granger Pipe Tobacco tin; George Washington Cut Plug Tobacco tin (larger size); Union Workman Tobacco tin - round; new cigar store Indian small statue; product boxes - Big John, Ojttawa, Buck Wheat, Yankee Girl; Kentucky Club pocket and round tin; George Washington round tin; Union Leader round tobacco tins; Master Marine Tobacco tin sign; Gold Medal Flour bag; Family Soap wood box; Sunny Monday wood box; Tag Soap wood box; American Starch wood box; Holmes & Coultts Biscuit box; Cough Candy wood box; Boot Jack Plug Tobacco box; Factory Smokers wood box; Big Kick Tobacco, Yankee Girl Tobacco cardboard stand-up displays; Herco 5c Cigar and Canadian Club hanging store sign; Big John Cut Plug - 1 tin and 2 boxes; 5 Peach Tobacco bags; 4 Owl Cigar bags; 8 Big John Labels; 6 Orphan Boy Labels; new tin cans with old NOS labels; large Mayo Cut Plug canvas sign; original Coke hand holding bottle Coke decals for Coke machines; Cedar Hill heavy paper coal signs; NOS cardboard Chew Red Man Tobacco NOS signs; J. B. Lytle Co. French Roasted Peanuts boxes; Clover Farm Ice Cream metal sign; enamel round Public Telephone sign - small size; Drucker's Store, Millersburg, Ohio broadside; plaster pig advertising Friedrichsen's Sausage, Dyer, Ind.; embossed tin sign NOS Old Reliable Coffee; Scale Scoops, 4 tin, 1 brass; Page's Ice Cream Folding Chair (tin insert); hanging scale, w/flat tray; Stoneware Jugs, 1 w/Adv. L. Marra & G. Roseling, Patterson, NJ; Havanna 5c Cigar paper sign/ Everybody's Hand Soap paper sign; Christmas Giveaway Child's Book; Scrubit cardboard sign; Sunshine Biscuit brass/glass cover; seed bin door fronts; Butternut Bread tin sign; Tip Top Bread masonite sign; Lightening Powders cardboard boxes; Sweet Cuba store bin; Putnam Dye cabinet; Heinz store jars; Glendora Coffee tin sign; Mother Hubbard Soap box; box of tin shelf cent signs; grass seed boxes - Sta-Green, NOS; boxes of oil stove wicks - NOS; Soap Saver Wash Board; large country store photo - framed; large Queen City Peanut tin; baskets of store display fruits/vegetables; special combination coffee, Sears & Roebuck, pail; early pepper and ginger spice tins; Spindler's Peanut Butter pail; Breakfast Cheer Coffee tin; Calumet Baking Powder tins; Graphol Penetrating Lubricant tin and Enoz Moth Liquid tin; Uneeda Bakers Graham Wafers tin and Nabisco Famous Chocolate Wafers tin; large 56 lb. Dekalb Seed sacks; square Gillies Coffee tin - no lid; Admiral Coffee bail handled tin; El Capitan Coffee bail handled tin; Johnson Preserves Crock - no lid, 1 Johnson Preserves crock w/lid; Rice's Seed Box w/packs; lard tins - Schneider's and Open Kettle; Red scale w/2 weights and tin tray; NOS insect sprayers; early tin tobacco tags; Creme de Menthe Plug Tobacco boxes - NOS; window decal - Ellison's Best All Purpose Flour; display boxes - 1 Peachy, 6 Insert Smoking Tobacco; 2 Hon-E-Nut Candy cardboard shelf signs, 1 American Blue cardboard hanging sign; roasted coffee boxes - NOS;



Grant's Hygienic Cracker Box - NOS and 2 Grant's paper labels; National cash register, wood grain painted tin with milk glass; Royal Hand Cleanser tin; Collar Button paper sign; Black Swan paper barrel labels; Marvel Rolled Oats labels; Kallet's cardboard popcorn boxes w/Coca-Cola logo; NOS Liberty Metal Cleaner tins; electric coffee grinder; Star Soap folk art doll; Culture Tobacco boxes; 46 tobacco boxes; 1 cardboard Red Top Snuff display; 1 heavy paper cigar cutter display; Dannemiller's coffee tin; Keyword Isbrandtsen Coffee tin; Keyword Canova Coffee tin; handblown store jar; Jersey Creme Tray sign; Veteran Brand Olives bottle; Blue Label Ketchup bottle; Dodson Braun Mustard bottle; Heinz Horseradish jar; 5 cent store cream bottle; 6 ounce Royal Baking Powder tin, Durkee's Cinnamon tin; Star Egg Carrier - John G. Elbs; E. E. Guignon Hardware flour sifter; NOS tin embossed milk sign - American Dairy Assoc. and Dairy Council of New York; Demand Nabob Tea and Coffee strip/shelf tin sign; Cherry Blossoms Soda strip/shelf tin sign; embossed Salada Tea strip/shelf tin sign; Red Rose Tea strip/shelf tin sign; Red Star 5 c Cough Drops strip/shelf tin sign; NOS embossed tin Rochelle Club Beverages sign; embossed tin Red Star Yeast sign; Embossed Tin Snider's Catsup sign; embossed tin Rochester Journal Newspaper sign; NOS embossed tin Pearl Baking Powder sign; embossed tin Fleischmann's Yeast tin sign; Wunderbar Rye Bread wood thermometer; White House Coffee, Dwinell Wright wood thermometer; Bakers Ice Cream wood thermometer;
 Boone Kitchen Cabinet tin grocery reminder; Milford Square Creamery wood thermometer; Eureka Blend Coffee tin; embossed tin Noxie-Kola 5c NOS sign; Norris J. Walters, Spencer, OH cardboard and wood basket; wooden advertising clothes hangers; fishtail scale w/scoop; Bungalow Maid feather duster; 3 cold cream tins, 1 face powder tin; foot powder tins; 2 Dixie Remedy boxes, 1 Dr. Hess Healing Powder for Horses; Medicines (Dr. Caldwell's, Thayers, Foley's, Beechams); Seidliz Powders tin; 1 Cuticura Talcum Powder tin; 1 Purodol Crystals tins; DeWitt's Vaporizing Balm, Turner's Milk Glass, Onionola Cobalt Blue; White Cross and Curad Bandage tins; tooth Powder tins (Co-re-ga, Dentlock, Merkel's, Co-re-ga sample); 1 Royal Baking Powder, 3 Voigt's Crate labels; Butternut Bread door decals; NOS various paper bags; 9 Old Mill Soap, 8 Everybody's Hand Soap labels; Kentucky Cardinal Apples Crate label; baking powder, catsup and other food labels; beverage labels; spice labels; medicinal labels; food labels; insecticide labels; Mastermobile Oil, Ink, Syrup & Peanut Butter, Food, Buffalo & Goodtest Brand Ammonia and Medicinal labels; invoice - Artwork by Archibald Willard; store displays - Cod Liver Oil, K & B Flour, Professional Razors; Faultless, Edgett-Burnham labels; Wayne Brand, Edgett-Burnham labels; early labels; Squaw Centerville canning labels; Rowley's and Marvel labels;
 Crossroads Syrup labels; Clover Farm labels; Elkay labels; seed display with card seed packs & other framed card seed packs; Alfred J. Brown Seed Co. labels; card seed boxes - NOS; card seed Dwarf Nasturtium packs; Capital and Luxury Coffee wood bins; grain bin; large tin store bin - Dwinell Wright Boston Roasted Coffee; NOS Ar buckle Coffee tin sign; wood Calumet thermometer; die cut wood Doan's thermometer; 100 lb. Occident Flour bags; brass front Biscuit Bin Union States Rusk Co., Grand Rapids, MI; NOS Nehi embossed tin sign w/bottle; Sayman Salve Jar, Chamberlin Salve, box of lozenges; lots of paper bags NOS; curved glass display case.

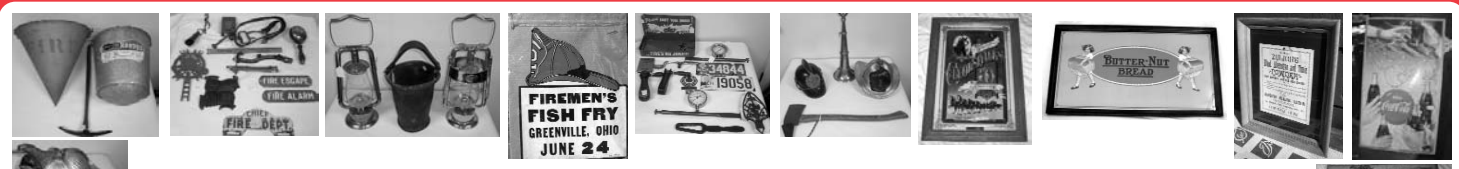
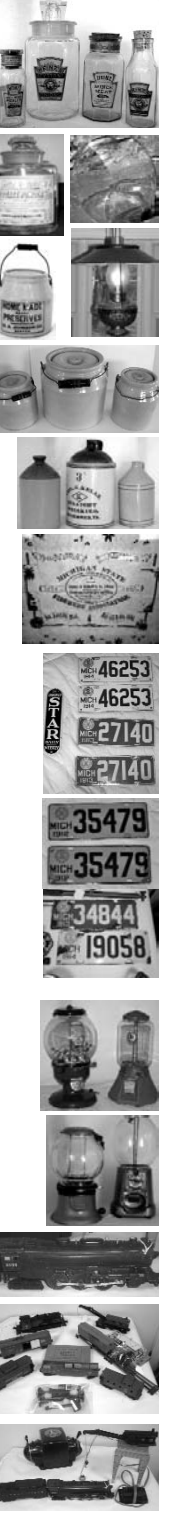
10% buyer's premium charged on all purchases.
 Terms of sale are cash or personal check with proper identification. Sorry, no credit cards.
 Not responsible for accidents day of sale or items after sold.

Providing delicious food, snacks and drinks during the sale!
L&M CONCESSIONS
 144 South Main St.
 P.O. Box 146
 Vermontville, MI 49096



REALTOR **NAA** **AUCTIONEER**
 Phone: 517-726-0181
 Fax: 517-726-0060
 e-mail:
 stantonsauctions@sbcglobal.net
 www.stantons-auctions.com

**Located in the 4-H Building,
 at 1025 S. Cochran Avenue,
 on the Eaton County
 Fairgrounds,
 Charlotte, Michigan**



LARGE & EXCELLENT ANTIQUE AUCTION

**Located in the 4-H Building, at 1025 S. Cochran Avenue,
 on the Eaton County Fairgrounds, Charlotte, Michigan**

(Go 20 miles southwest of Lansing on I-69 to Exit 60 (Eaton Rapids/M-50)), 1/2 mile west to Cochran Ave., then 1/4 mile south to the Fairgrounds, turn in and go to the building behind the Grandstand - this is 1 mile south of the downtown Courthouse on Cochran), on:

**SATURDAY MORNING, APRIL 4, 2009
 9:00 A.M. Sharp!**

Selling in two rings during the course of the auction

FIREMAN'S COLLECTIBLES

Excellent Dietz brass "Department Tubular Lantern" marked Sandy Bay - A.G.D. Co.; Dietz King chrome "Fire Department" lantern; leather water bucket; metal fireman's helmet w/leather patch and brass eagle made by Cairns & BPC; fire escape sign; fireman's iron helmet and ladder sign - Insurance; fire chief license plate holder; 4 clasped hands iron sign - Insurance plaque (?); fire alarm sign; Pioneer, Liberty, Security, and Fireen stick type fire extinguishers; Presto fire extinguisher w/box; cast iron full size city fire hydrant; fire escape sign; large brass fire bell; 2 small brass fire bells; NOS Wheeling cone shape fire buckets; NOS Reeves dome boom fire bucket; NOS dome bottom red paint fire bucket; "Fire House Area" sign w/marbles; ambulance first aid box; huge collection of fireman related cartoons; fireman's ax; European fireman's helmet; fireman's megaphone; double brass hand bell; American LaFrance iron fireman's tool; brass fireman's tool marked MFD fire alarm box; fireman's belt w/brass hooks; fire ax pick cover; large "Stuff Your Smoke" ashtray; 2 fire equipment gauges; brass "Fire and Police Guide" covered box; fireman's theme trivet; antique "Fireman's Bed Wrench" with illustration; Texaco paper sign w/fireman; prints showing antique fire engines; 4 very good pieces of sheet music with fireman themes...some by Victorian era illustrator E.T. Paul; 1960 car advertising w/fire truck; Michigan State Fireman's Association 1886 Reunion at Big Rapids, Michigan print or place mat, framed; picture showing horse drawn fire wagon in a flood; picture showing firehouse with horse drawn fire equipment "CFD No. 17"; and more.

BANK OF LANSING TELLER'S STATION-SALESMAN SAMPLES, PETROLIANA, GAS PUMP GLOBES, MORE ADVERTISING ITEMS AND SIGNAGE

Bank of Lansing teller's station made of solid brass w/etched glass panels and carved lions and bumblebees, measuring 7 ft. long x 3-1/2 ft. tall; rare "Union Oil Company" 13" gas pump globe; 56" cardboard free-standing cigarette advertising sign depicting Art Deco lady sitting on top of "Twenty Grand" pack of cigarettes w/horse head on same; salesman sample inside mailbox; Hamilton Brown Shoe Company, St. Louis Factory scene, tin sign in wood frame 32x44"; Orange Crush-Ice Cold Fresh Juice Drink clock made by Crystal Mfg. Co., Chicago - excellent; Michigan porcelain license plates 1910-1914. The 1912, 1913 and 1914 are matched pairs; Red Goose lighted stand-up sign; Toronto Star Daily/Weekly; porcelain door push; No Smoking - The Texas Company - porcelain door push; lot of beer cans; Phillips 66 - die cut porcelain sign, 2 sided; Jos. Schlitz Brewing Company - Milwaukee Lager Beer, cardboard matted and framed, 29"x34"; Wyandotte - J.B. Ford Company, Wyandotte, Michigan - self-framed tin sign, 28"x40"; Lunsford Oil Company 88 with Ethyl 3-piece glass globe; Crystal Flash gas pump globe with plastic body; Eveready Flashlight and Battery paper sign in wood frame; Kool Motor Gasoline 15" metal band "High Test Anti-Knock"; Stroh's Bohemian Beer; Detroit tin, matted and framed 12"x19" sign; Big New Overland \$725 automobile sign, paper, 24"x32"; Leman's 1989 racing poster, paper 24"x36" sign; Red Goose Shoes, die cut wood sign, 34"x71"; Drink Brownie - "If You Like Chocolate Soda", 22"x61" masonite/wood frame; Pepsi-Cola-Sparkling - die cut tin sign; NOS, 8"x29" American Legion Auxiliary light-up glass globe, 10" with base; Clydesdale 50th Anniversary/Limited Edition #1459, picture w/original frame; Lenard Super X-Tane globe; Leonard globe; Leonard Diesel globe; Leonard Sunburst globe; Marathon globe (early globe with runner); Sieberling tire sign; Model porcelain tobacco sign; Polarene 42" porcelain sign; Kendall sign; Super Chevrolet chalkboard; Buick Wildcat showroom display; Michelob Draft light-up sign; Pennzoil 1 gal. can (early can); Eagle 2 gal. can; 2 box lots of oil cans; air pump (restored), very nice; playing card display rack; old piano bench; old time antique pricing machine; Sunshine cigarettes; Heineken's Beer; National Cigarettes; Epco Cigars; Dutch Master's Marvel Cigarettes; Leader Cigars on canvas; Camels; Salem Spirit; Camel Lights; Marlboro; Marlboro (Red); L&M Long Lights; Vantage; Harley-Davidson Cigarettes display box; Harley-Davidson; Pepsi Santa; Realty wood sign; Quaker Full Pep Feeds; Master's Golf Seat; Mountain Dew store display; metal Coke 6 pack; 4 military posters; Coke radio; oak child's rocker; oak magazine rack; Copper Bourbon stencil; Carhartt denim banner; 5 Butterkist popcorn boxes; Marine City bank thermometer; Hall Fishing Lines, cardboard; Large Teddy Bear; Texas Ranger outfit; Coke cardboard; Tiger Seeds; Alliance Coffee, cardboard; Lansing Drug Store calendar; No Trespassing wood sign; National Brass #313 cash register; To Let wood sign; Granger Tobacco, cardboard; 3 Pepsi paper signs; tin flanged sign; Scarce Merrick double spool cabinet; Clark spool cabinet with ruby glass; Arrowhead water dispenser; large lawn sprinkler; **Miscellaneous** - Antique curved glass country store cane cabinet; 30 drawer card file; 20 spike type receipt holders including National cash register; store doorbell; desktop bell; unusual railroad candle lamp marked on the bottom "Kate's Place"; set of sterling shakers; salesman sample pick ax; like new Smith Corona portable typewriter; Royal Copenhagen collector plates; excellent small Indian bead work wall pocket - 100 years old; New Old Stock "German Egg Timer"; German carriage clock marked FM with eagle; Victorian Eastlake walnut slipper stool; 1913, 1914 Michigan porcelain license plates; AFL license plate holder; 2 wooden noise makers; Seth Thomas antique mantel clock with pillars and lion heads; oak 35 place mug rack; Busch Beer advertising; Champagne advertising thermometer; Standard White Crown gas sign, 15x12"; Standard Red Crown gas sign, 15x12"; New Land 'O Lakes thermometer; 3 NOS advertising thermometers; Drink Royal Crown Cola thermometer; Bowes Seal Fast Automotive thermometer; American Oil Corporation, Jackson, Mich. "gas gauge and spark plug tester."



Selling real estate and all types of property, at auction, anywhere.



SEWING MACHINES AND COLLECTIBLES

Clark's Mile-End thread cabinet; sewing bird; sewing clamp on pin cushion; "Third Hand" sewing clamps; doll pin cushion w/sewing tape; Helix needles-Milward's wooden case; Clark's ONT 5 cent tin dispenser w/original shipping box; album of 90 sewing trade cards; Mother of Pearl (MOP) decorated sewing items;

- Album of approximately 90 sewing/thread trade cards
- Singer Sew Handy "For the Young Seamstress", NIB sewing machine - original/mint
- Mattel Sew Perfect toy sewing machine in original box
- Singer Sew Handy w/cover and manuals
- Necchi Super Nova Julia hand crank sewing machine
- Blue Casige hand crank sewing machine w/original box
- KayanEE Sew Master electric sewing machine with original box
- Outstanding black Singer portable sewing machine, hand crank w/red case
- Outstanding tan Singer portable sewing machine w/brown case
- Casige pink hand crank sewing machine w/original box, very good
- SewEtte battery operated sewing machine w/original box, very good
- SewEtte battery operated sewing machine, no cover, very good
- Sew E-Z red battery operated sewing machine w/original box
- Sew E-Z brown battery operated sewing machine w/original box
- Stitch Mistress hand crank sewing machine w/original box
- Gateway Jr. (Model NP-1) hand crank sewing machine w/original box
- Blue Sew Master hand crank sewing machine w/wooden base
- Romance hand crank sewing machine w/wooden base
- KayanEE blue hand crank sewing machine, very good
- Casige black stenciled hand crank sewing machine, very good
- Little Betty red CTRACO hand crank sewing machine
- Little Betty green CTRACO hand crank sewing machine
- Little Betty chrome and black CTRACO hand crank sewing machine
- Big Ben large alarm clock
- Grain English hand crank sewing machine
- KayanEE hand crank Sew Master sewing machine
- Gateway Jr. Model hand crank sewing machine
- Artcraft Jr. Miss hand crank sewing machine
- Singer (1914) antique portable hand crank sewing machine with iron base
- Same as above
- Same as above
- Pink Sew Mater hand crank sewing machine
- Red Sew Master hand crank sewing machine
- Blue Sew Master battery operated sewing machine
- Starco Jet Sew-o-Matic hand crank sewing machine
- Starco Senior Sew-o-Matic hand crank sewing machine
- Casige yellow hand crank sewing machine

TOYS & TRAINS

Cast iron toy airplane marked "Lindy"; tin Disney Donald Duck walking fireman by Marx; Lindstrom key wind toy boat; "A Walt Reach Toy" key wind Black Diamond Coal Company toy truck; Hafner Trains key wind #2000 engine and 5 cars; "On the Spot" fire engine music box; large selection toy fire engines; "Fire Chief Junior Siren bike siren"; Pabst beer sign w/fire engine and horses; Manod - live steam model fire engine set; Milton Bradley puzzle - fire truck; antique fire truck puzzle; Fisher Price toy fire engines; Texaco children's stilt; Buddy L extension ladder - excellent; Lionel - Type ZW transformer; #601 Seaboard diesel locomotive; 6560 crane car; 3423 novelty car; 364167 caboose; 6257 caboose; 6462 gondola; 3656 cattle car; cattle loading siding; Lionel Trains 309 yard set in original box; street lights; car disconnects; 25000 hopper car; 6119 caboose; 282R platform crane w/controls; 2055 steam locomotive w/tender; 260 track bumper; 636255 wheel trucks flat car; Sunoco tanker.

THE PARTIAL LIST OF THE SIMMONDS COUNTRY STORE COLLECTION FROM OHIO

Red Dot Cigar NOS cardboard sign; Red Dot Cigar cardboard fan pull NOS; Columbus Dispatch round tin sign NOS; cardboard Houstonia Jones' Liniment die cut displays w/boxes, S Charleston, Ohio; paper Kellogg's Corn Flakes grocer sign; cardboard Crescent Flour Voigt Milling Co., Grand Rapids, MI sign; Red Man paper sign; Butternut die cut bread displays; cardboard Fairies Starch sign; cardboard Chew 93 Tobacco sign; Vitacreme Chipped Wheat cereal boxes NOS; flour sacks - NOS - large; Yankee Girl cardboard display boxes - NOS; cardboard Vegetable Store signs - Edgett-Burnham Co.; cardboard NOS egg boxes; NOS Toiletry cardboard boxes; NOS cardboard signs; store window decals - Butternut Bread - NOS; Hendlers Ice Cream paper sign NOS; tin Coke bottle thermometer; Tasti-Spread Oleomargarine NOS boxes; Pine Grove NOS butter boxes; Meyers Sweet Rose Butter boxes; misc. NOS butter boxes; Dr. J. B. Lynas & Son cardboard signs NOS; NOS cloth bags; paper F. B. Gates advertising grocer bag and Wonder Beverages bag; misc. NOS paper coffee bags; NOS misc. product boxes; Angl Salve display w/box - NOS; 3 full cardboard boxes Bunte Cough Drops and 3 Jessops Cough Drop boxes; product boxes - 1 Peachy Chewing Tobacco, 2 Big John Cut Plug, 7 Orphan Boy, 1 Seven Seas and 1 Culture; NOS Liberty cardboard coffee boxes; NOS Square Deal Coffee cardboard boxes; NOS Morning Delight Coffee cardboard boxes; NOS paper flour bags; bread loafs; NOS medicine boxes - B-L Preparation cardboard boxes; tin Clover Farm Ice Cream sign NOS; Dr. Hyman Painless Dentist arrow sign; NOS cardboard shelf signs; NOS Old Dutch Cleanser die



cut signs; NOS shoelace displays; NOS Skipper cardboard boxes; NOS cardboard headache displays; NOS cardboard hanging signs - Gold Dust and American Blue Ink and Clabber Girl Tag; tin embossed pointing hand Brown's Shoes sign; large glass apothecary jar with ground swirl lid; octagon store jar w/swirl ground lid; eight side square store jar; square store jar; 10 sided store jar; round store jar w/lids; graduated store jars w/ground lids; store cylinder & pedestal shaped store jar with ground lid; Dakota store jar; Art Deco store jar; other store jars; bread loafs; Empire State Biscuit box; Bob's Peanut Butter Sandwiches - Salted Peanuts; Father John's dovetailed box; Davis Hot House Cucumber box; Snider's Catsup box; Ramon's glass store jar; box of Coats & Clark crochet and thread store stock; bars of soap; Andy's Fun Show cardboard sign; San-Cura Ointment die cut display sign; A. N. Kidwell Dry Goods cloth store sign; Standard Oil Company galvanized bucket; 48 star veteran's flag and two celluloid pins; framed Insectine sign; Zoa-Phora dovetailed wood box; dovetailed wood box with Martha Washington Pepper label; Voigt's cardboard signs; The Derby Tobacco label; W. A. Krepps Buggies and Harness cardboard sign; Red Gate Coffee labels;

James Henry Packing Co. lard tin; Laurel Butter Crackers tin; Durkee dovetailed wood box; Southern Flour Mill 50 lb. cloth sacks; Suretest Flour cloth sacks; Berryville Mills Perfection cloth sacks; Occident Cloth flour sacks; Cat's Paw NOS Rubber Heel boxes with product; Red Dot Cigar tin with 1917 stamp; National Detective embossed tin door push NOS; tin Coke bottle thermometer; Resto Foot Cream cardboard store display with boxes NOS; Hudson Horse and Cattle NOS boxes and Dr. J. Woodbury's Horse Container and 2 Horse Cure boxes; Scotts Pills w/product NOS tins; Moth-Ene NOS tins; Pearlo Tooth Whitening Bottles - NOS; Brings Cigars 3 Bros Admiration NOS tin door push; Golden Rule and Cenol KleenKwick Crystals unused; NOS aspirin tins; Williams Anti-Pain Ointment sample tins NOS; White Cloverine Salve tins - NOS; NOS A.K. Walch's Cigar tin sign; Red Man paper sign NOS; Chesterhill die cut arrow sign NOS; William D. Burt Seed, Dalton, NY seed labels; Glenhome Farm Egg boxes NOS; blue NOS egg boxes; orange egg boxes NOS; Card Seed boxes - NOS; Blue embossed OS Oscar A. Lappe Co. Notary Public signs; American Agriculturist embossed tin signs - NOS; Up to Date Shoes P. W. Byer Dansville, NY embossed NOS tin sign; NOS boxes - Gold Bank Coffee, Barry's Cake Mix and Tasti-Spread Oleomargarine; 5 Pratts Chick Tables, 1 Lee's Pickpaste Boxes with product; Colorite, Frick's Laundry Blue, Bingo Ironing Wax, Red Cross Blue boxes; Bull Dog Blue, Liberty Blue, Oil Dressing containers; Davis 5 Pound Baking Powder tin; Veteran Coffee tin; Meritt Powder tins; household cleaning tins;

Star Metal Polish tins; tea sample containers; Bickmore Gall Salve tin; Stove Polish tins; Hickey's Tobacco tins; Golden Rule tins - large; Zerbst's Capsule display; Linenwhite Laundry Blue paddles; NOS Starr Egg Carrier; Mutton Tallow with Camphor tin, Corona Wood Fat Compound tin; RSL - Re-Sto-Lust Polish tins; KC Baking Powder tins; Norwegian Cod Liver Oil bottles - NOS; Black Cat Stove Polish bill hook; Berma Coffee tin; J.B. Lynas Lemon Tissue bottles- NOS; India Mills Brand Spices dovetailed box; early Golden Rule tins; Wayne Brand tins - paper label; Luden's Cough Drop tin; Fixaco Cough Drop tins - NOS; Spartan Pure Aspirin tins - NOS; 1 Killakes tin and 1 Dean's Peacocks Condom tin; Pinex Laxatives NOS tins; Miles Anti-Pain Pills tins; Kota'nyi's Paprika tins; Danahy Faxon tin and H&H Brand Allspice tin; 3 Golden Sun tins and 1 Golden Sun box; Bacorn's Pure Ginger tins; 1 Doan's Ointment tin and 1 Sayman's Wonder Herbs tin; Berma Molasses cardboard display; Siebert Poison Fly Paper NOS; Frontenac Peanut Butter tin; Flash Hand Cleaning NOS tins; Dodd's Kidney Pills Display; cardboard Blue Seal Spice boxes NOS; Dean's Pickling Spice boxes; Nasturtium Seed boxes; EZE Orange Flange window display cardboard; Ka-Do Soap box;

Barnum Butter cardboard display; 3 Prince Albert tins, 1 Half and Half tin, 1 Union Workman tin, 1 Beechnut Pack, 1 Snuff Box, 1 8-Hour Union scrap bag; Granger Tobacco tins; Davis Baking Powder tins - red and yellow; old labels on new tin cans; bread loafs; Whiz sample tin and Barton's Shoe Paste NOS, Fulton's Shoe Polish tin; Aladdin Dye Soap tin display; Brotherhood Tobacco tin; 2 honey bottles and 3 pickle bottles; advertising painters hats; cast iron Jaxson Soap string holder; Carter 50 lb. paint can; Acme Louse Killer and Dr. Hess Louse Killer container; Scarless Gall Remedy NOS tins; Johnson's Liquid Polish tin - half gallon; Super Duper Pot Cleaner Steel Wool - NOS; misc. cleaning tins and bottle; Old Honesty Soap boxes; 4 Hirsbrunner's Dairy Farm and 7 Quality Butter NOS butter boxes; NOS cardboard medicine boxes; NOS food boxes; Colonial Club Cigar metal flange sign; bail handled crocks - large and small patented February 1896, 1 smaller, 1 larger, all with lids; wooden milk crates, 1 Lang's, 2 Dairyman; Geiger's Brand Buckwheat, Corn & Wheat Flour wooden box; 10 Pound Golden Rule Coffee tin; porcelain Ex-Lax thermometer 36L x 8W inches; Diamond Dyes glass top display case - wooden dovetailed; Allison Bros' Family Soap wood box, 4 sides, with label; wood dovetailed Spragues, Warner & Griswold Spices box; pedestal store jar with swirl lid - 10-1/2 inches tall; round Dakota store jar - 14 inches tall; round Dakota store jar 11-1/2 inches tall; teardrop Dakota store jar - 10-1/2 inches tall; teardrop cut glass store jar - 11 inches; teardrop cut glass store jar - 8-1/2 inches; rare small cut glass store jar - 6-1/2 inches; brass front Golden Grain Biscuit store display w/glass; tin Tintex display cabinet;

Perfection Dyes lithographed tin front, wood display cabinet; Perfection silver front Perfection Dyes cabinet; oak barbershop shaving mug display; 2 Uncle John's Maple Syrup die cut display and 1 Maple Kisses box; die cut Fireman's Fish Fry, Greenville, Ohio cardboard sign; Gold Medal Brand Coffee label; Framed Columbus Varnish and Shellac paper signs; tin Dekalb wind directional; tin We Give Cash Discount Stamps sign on wood 30L x 12W inches; Dekalb die cut masonite sign; Clabber Girl canvas store sign 18w x 36L inches; wood Helpmate Sewing Machine sign - Domer Brothers; NOS shelf signs Bruton Snuff; wood Lions Club arrow sign; embossed tin W. D. Grover Undertaker sign, Dansville, NY; wood C.A. McNaughton Merchant Tailor thermometer 21 x 5-1/4 G. Ruehling Jeweler wood thermometer 15 x 4; VCELA Building and Loan wood thermometer 11-1/2 x 3; A. L. Jones Drugs/Dr. A. C. Daniels' wood thermometer 21 x 5; American Mirror Works wood thermometer 21 x 5; Alfred's Clothes Shop wood thermometer 15 x 4; Carl A. Otto & James Leach Optometrists wood thermometer 15 x 4; A. E. De France Electric Co. wood thermometer 15 x 4; A. Ratkovsky Furs wood thermometer 12 x 3-1/2; Joseph Bruchac Taxidermist wood thermometer 8 x 1-3/4; Ghiradelli Chocolate tin; Eagle Brand Cigar box; Wheatlet Cottage barometer; Mansfield's Capillarix bottle w/box, 3 White's medicine boxes; Mentholatum Blotter; Indian Cures; 2 Humphrey's, 1 Dr. Herrick's, 1 Murray's Infalible System Tonic; 1 Lane's Blotter; 1 Lane's Cough Drops; 1 Parmelee Pills; 1 Cuticura Pills; 1 Dr. Kay's Renovator; 2 Miles Tins; 1 Gin Pills, 1 Dr. Morse tin; 1 Williams sample tin; Ma-Le-Na Pills, Byro-da tin, King's Pills, Hood's Vegetable Pills; JBL Toothpaste, Dr. White's Dental Cream, Barbasol box w/cream, Bakelite razor, Doctor's razor blade box; Toilet Soap wood box, 5 soaps; Sanitol Hair Tonic, Glyco-Thymoline bottles; Spina Cream Soap box; Grandpa's Soap, O-My Floating Witch Hazel Soap, Lifeboy Soap; Wood Ex-Lax Thermometer 9 x 2-1/2; Frontenac Peanut Butter

Tin; Nut House tin; Jayne's Expectorant Tonic bottle; porcelain Mentholatum thermometer 18-1/2 x 6-1/4; Dawn Woodworking Co. wood thermometer/barometer 12 x 3; Garrett City Coal Company wood thermometer/barometer 8-1/2 x 3; American National Bank wood thermometer 12 x 3; Andrew Little & Sons wood thermometer 12 x 3; Newark Welding Co. wood thermometer 12 x 3; Rex Cleveland Heater Co. Clothes Washing Guide - 11 x 2-1/2; Bovards Funeral Home wood thermometer 8 x 2-1/2; Burr's PA Certified Chicks wood thermometer 7-1/2 x 1/2; Sealy Posturepedic Mattress wood thermometer 8 x 2-1/2; First Trust Bank of Canton wood thermometer 12 x 3; Nick's Electric Brake Service wood thermometer/barometer 93/4 x 3-1/2; United Farm Agency wood thermometer/barometer 9-3/4 x 3-1/2 Carolina Pharmacy wood thermometer 9-1/2 x 2-1/4; Bostwick Steel Lath Co., Hiles, OH wood thermometer; Edgewater Brand Flour tin; Farmer's Fried Egg Carrier, Williams Jones Druggist and Grocer, Oxford, NY; large hand blown store jar; M. Born & Co. Merchant Tailors wood thermometer 23 x 9-3/4; framed Zulich's Blood, Alterative and Talc Powder heavy paper sign; Bee Hive Corn Syrup tin; Uncle Sam Axle Grease tin, Galena, IL; Columbia Cut Plug Tobacco tin; George Washington Tobacco tin; Carstens Washington Brand Lard tin; various spice tins; Lipton's Coffee tin; Thomas Wood & Co. Coffee tin, Boston; French Market Coffee tin; Harry Horne's Custard tin; Wells Buttermilk Coloring and American Fruit jar rings; bail handled Family Soda Crackers, Ontario Biscuit Co.; National Biscuit Co. Uneeda Bakers Cheese Wafer tin; Defy The World paper label on

