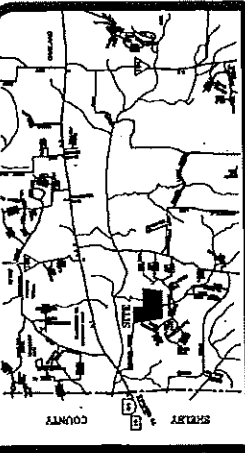


DETAIL:
SCALE: 1"=300'

**GRAPHIC REPRESENTATION OF USABLE AREA
FOR EACH INDIVIDUAL TRACT**

NOTE: ACRES SHOWN REPRESENTS USABLE AREA INCLUDING THAT AREA CONTAINED IN THE PERIPHERAL USE AND BENEFIT ELEMENT FOR EACH TRACT AND EXCLUDING THAT AREA CONTAINED IN THE FIRST FOOT WIDE ACCESS STRIP THAT WOULD BE LOST BY OTHER TRACTS FOR THEIR USE AND BENEFIT.

NOTE: AREA CONTAINED IN EACH FIFTY FOOT WIDE ACCESS STRIP SHALL BE USED BY THE CORRESPONDING LOT IN THE FORM OF A PERIPHERAL USE AND BENEFIT ELEMENT.



VICINITY MAP

**CERTIFICATE OF APPROVAL OF THE HICKORY WITHTE
PLANNING COMMISSION**

The Planning Commission of the City of Hickory Withte, Tennessee, has reviewed the application for a subdivision of land in the City of Hickory Withte, Tennessee, and has approved the same. The Commission has determined that the subdivision is in the best interests of the City and the State of Tennessee, and that the subdivision meets the requirements of the Tennessee Subdivision Control Act, Chapter 129, Tennessee Code Annotated, and the rules and regulations of the Tennessee Department of Transportation, Chapter 129-1-1, Tennessee Code Annotated.

[Signature]
Mayor, Hickory Withte
Planning Commission

CERTIFICATE OF THE FAYETTE COUNTY PROPERTY ASSESSOR

I, the undersigned, being the duly qualified and sworn Property Assessor of Fayette County, Tennessee, do hereby certify that the above described land is situated in the City of Hickory Withte, Tennessee, and that the same is subject to the provisions of the Tennessee Subdivision Control Act, Chapter 129, Tennessee Code Annotated, and the rules and regulations of the Tennessee Department of Transportation, Chapter 129-1-1, Tennessee Code Annotated.

[Signature]
Fayette County Property Assessor

OWNER'S CERTIFICATE

I, the undersigned, being the owner of the above described land, do hereby certify that the same is situated in the City of Hickory Withte, Tennessee, and that the same is subject to the provisions of the Tennessee Subdivision Control Act, Chapter 129, Tennessee Code Annotated, and the rules and regulations of the Tennessee Department of Transportation, Chapter 129-1-1, Tennessee Code Annotated.

[Signature]
Owner

**SURVEYOR'S CERTIFICATE OF ACCURACY AND INSTALLATION
OF MONUMENTS**

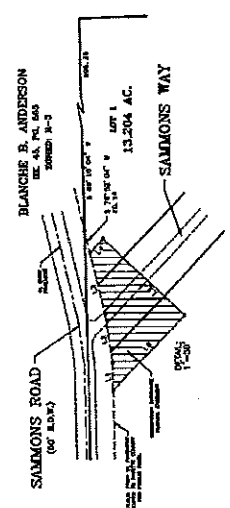
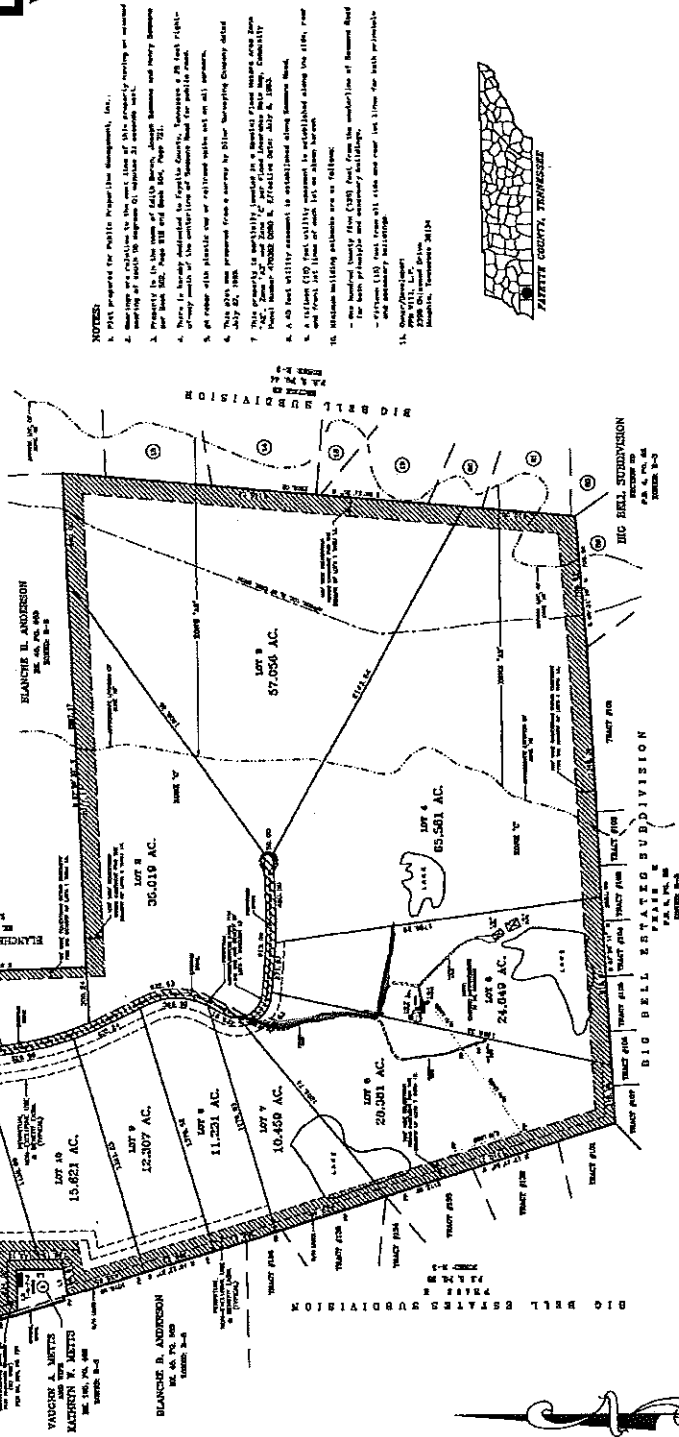
I, the undersigned, being a duly qualified and sworn Surveyor of Fayette County, Tennessee, do hereby certify that the above described land is situated in the City of Hickory Withte, Tennessee, and that the same is subject to the provisions of the Tennessee Subdivision Control Act, Chapter 129, Tennessee Code Annotated, and the rules and regulations of the Tennessee Department of Transportation, Chapter 129-1-1, Tennessee Code Annotated.

[Signature]
Surveyor



LINE TABLE

| LINE NO. | BEARING | DISTANCE | CUMULATIVE DISTANCE |
|----------|-----------------|------------|---------------------|
| 1 | N 89° 15' 00" E | 13.204 AC. | 13.204 |
| 2 | S 89° 15' 00" E | 13.204 AC. | 26.408 |
| 3 | S 00° 00' 00" E | 13.204 AC. | 39.612 |
| 4 | N 89° 15' 00" W | 13.204 AC. | 52.816 |
| 5 | N 00° 00' 00" W | 13.204 AC. | 66.020 |
| 6 | N 89° 15' 00" E | 13.204 AC. | 79.224 |
| 7 | S 89° 15' 00" E | 13.204 AC. | 92.428 |
| 8 | S 00° 00' 00" E | 13.204 AC. | 105.632 |
| 9 | N 89° 15' 00" W | 13.204 AC. | 118.836 |
| 10 | N 00° 00' 00" W | 13.204 AC. | 132.040 |
| 11 | N 89° 15' 00" E | 13.204 AC. | 145.244 |
| 12 | S 89° 15' 00" E | 13.204 AC. | 158.448 |
| 13 | S 00° 00' 00" E | 13.204 AC. | 171.652 |
| 14 | N 89° 15' 00" W | 13.204 AC. | 184.856 |
| 15 | N 00° 00' 00" W | 13.204 AC. | 198.060 |
| 16 | N 89° 15' 00" E | 13.204 AC. | 211.264 |
| 17 | S 89° 15' 00" E | 13.204 AC. | 224.468 |
| 18 | S 00° 00' 00" E | 13.204 AC. | 237.672 |
| 19 | N 89° 15' 00" W | 13.204 AC. | 250.876 |
| 20 | N 00° 00' 00" W | 13.204 AC. | 264.080 |
| 21 | N 89° 15' 00" E | 13.204 AC. | 277.284 |
| 22 | S 89° 15' 00" E | 13.204 AC. | 290.488 |
| 23 | S 00° 00' 00" E | 13.204 AC. | 303.692 |
| 24 | N 89° 15' 00" W | 13.204 AC. | 316.896 |
| 25 | N 00° 00' 00" W | 13.204 AC. | 330.100 |
| 26 | N 89° 15' 00" E | 13.204 AC. | 343.304 |
| 27 | S 89° 15' 00" E | 13.204 AC. | 356.508 |
| 28 | S 00° 00' 00" E | 13.204 AC. | 369.712 |
| 29 | N 89° 15' 00" W | 13.204 AC. | 382.916 |
| 30 | N 00° 00' 00" W | 13.204 AC. | 396.120 |
| 31 | N 89° 15' 00" E | 13.204 AC. | 409.324 |
| 32 | S 89° 15' 00" E | 13.204 AC. | 422.528 |
| 33 | S 00° 00' 00" E | 13.204 AC. | 435.732 |
| 34 | N 89° 15' 00" W | 13.204 AC. | 448.936 |
| 35 | N 00° 00' 00" W | 13.204 AC. | 462.140 |
| 36 | N 89° 15' 00" E | 13.204 AC. | 475.344 |
| 37 | S 89° 15' 00" E | 13.204 AC. | 488.548 |
| 38 | S 00° 00' 00" E | 13.204 AC. | 501.752 |
| 39 | N 89° 15' 00" W | 13.204 AC. | 514.956 |
| 40 | N 00° 00' 00" W | 13.204 AC. | 528.160 |
| 41 | N 89° 15' 00" E | 13.204 AC. | 541.364 |
| 42 | S 89° 15' 00" E | 13.204 AC. | 554.568 |
| 43 | S 00° 00' 00" E | 13.204 AC. | 567.772 |
| 44 | N 89° 15' 00" W | 13.204 AC. | 580.976 |
| 45 | N 00° 00' 00" W | 13.204 AC. | 594.180 |
| 46 | N 89° 15' 00" E | 13.204 AC. | 607.384 |
| 47 | S 89° 15' 00" E | 13.204 AC. | 620.588 |
| 48 | S 00° 00' 00" E | 13.204 AC. | 633.792 |
| 49 | N 89° 15' 00" W | 13.204 AC. | 646.996 |
| 50 | N 00° 00' 00" W | 13.204 AC. | 660.200 |
| 51 | N 89° 15' 00" E | 13.204 AC. | 673.404 |
| 52 | S 89° 15' 00" E | 13.204 AC. | 686.608 |
| 53 | S 00° 00' 00" E | 13.204 AC. | 699.812 |
| 54 | N 89° 15' 00" W | 13.204 AC. | 713.016 |
| 55 | N 00° 00' 00" W | 13.204 AC. | 726.220 |
| 56 | N 89° 15' 00" E | 13.204 AC. | 739.424 |
| 57 | S 89° 15' 00" E | 13.204 AC. | 752.628 |
| 58 | S 00° 00' 00" E | 13.204 AC. | 765.832 |
| 59 | N 89° 15' 00" W | 13.204 AC. | 779.036 |
| 60 | N 00° 00' 00" W | 13.204 AC. | 792.240 |
| 61 | N 89° 15' 00" E | 13.204 AC. | 805.444 |
| 62 | S 89° 15' 00" E | 13.204 AC. | 818.648 |
| 63 | S 00° 00' 00" E | 13.204 AC. | 831.852 |
| 64 | N 89° 15' 00" W | 13.204 AC. | 845.056 |
| 65 | N 00° 00' 00" W | 13.204 AC. | 858.260 |
| 66 | N 89° 15' 00" E | 13.204 AC. | 871.464 |
| 67 | S 89° 15' 00" E | 13.204 AC. | 884.668 |
| 68 | S 00° 00' 00" E | 13.204 AC. | 897.872 |
| 69 | N 89° 15' 00" W | 13.204 AC. | 911.076 |
| 70 | N 00° 00' 00" W | 13.204 AC. | 924.280 |
| 71 | N 89° 15' 00" E | 13.204 AC. | 937.484 |
| 72 | S 89° 15' 00" E | 13.204 AC. | 950.688 |
| 73 | S 00° 00' 00" E | 13.204 AC. | 963.892 |
| 74 | N 89° 15' 00" W | 13.204 AC. | 977.096 |
| 75 | N 00° 00' 00" W | 13.204 AC. | 990.300 |
| 76 | N 89° 15' 00" E | 13.204 AC. | 1003.504 |
| 77 | S 89° 15' 00" E | 13.204 AC. | 1016.708 |
| 78 | S 00° 00' 00" E | 13.204 AC. | 1029.912 |
| 79 | N 89° 15' 00" W | 13.204 AC. | 1043.116 |
| 80 | N 00° 00' 00" W | 13.204 AC. | 1056.320 |
| 81 | N 89° 15' 00" E | 13.204 AC. | 1069.524 |
| 82 | S 89° 15' 00" E | 13.204 AC. | 1082.728 |
| 83 | S 00° 00' 00" E | 13.204 AC. | 1095.932 |
| 84 | N 89° 15' 00" W | 13.204 AC. | 1109.136 |
| 85 | N 00° 00' 00" W | 13.204 AC. | 1122.340 |
| 86 | N 89° 15' 00" E | 13.204 AC. | 1135.544 |
| 87 | S 89° 15' 00" E | 13.204 AC. | 1148.748 |
| 88 | S 00° 00' 00" E | 13.204 AC. | 1161.952 |
| 89 | N 89° 15' 00" W | 13.204 AC. | 1175.156 |
| 90 | N 00° 00' 00" W | 13.204 AC. | 1188.360 |
| 91 | N 89° 15' 00" E | 13.204 AC. | 1201.564 |
| 92 | S 89° 15' 00" E | 13.204 AC. | 1214.768 |
| 93 | S 00° 00' 00" E | 13.204 AC. | 1227.972 |
| 94 | N 89° 15' 00" W | 13.204 AC. | 1241.176 |
| 95 | N 00° 00' 00" W | 13.204 AC. | 1254.380 |
| 96 | N 89° 15' 00" E | 13.204 AC. | 1267.584 |
| 97 | S 89° 15' 00" E | 13.204 AC. | 1280.788 |
| 98 | S 00° 00' 00" E | 13.204 AC. | 1293.992 |
| 99 | N 89° 15' 00" W | 13.204 AC. | 1307.196 |
| 100 | N 00° 00' 00" W | 13.204 AC. | 1320.400 |



FINAL PLAN
CYPRESS CREEK RANCH SUBDIVISION
7th CIVIL DISTRICT
HICKORY WITHTE, FAYETTE COUNTY, TENNESSEE
ZONED: R-3 - 12 LOTS - 306.583 ACRES
OCTOBER 27, 1999
SHEET 2 OF 2

OSC 1064
PG 67

OCEAN SURVEYING COMPANY