

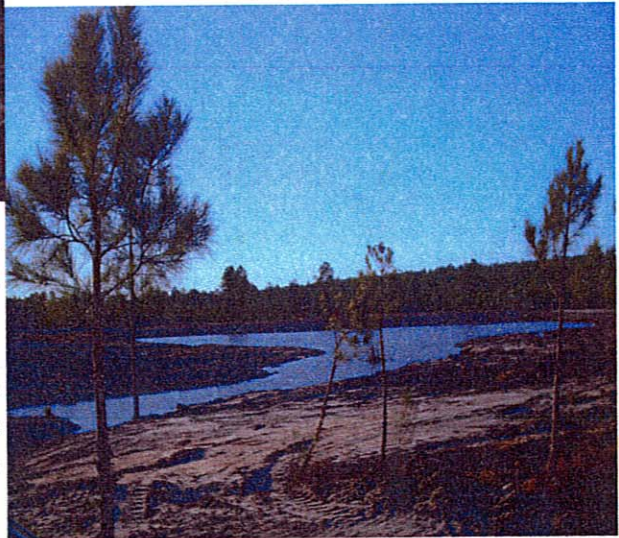
## Lake Complete



Over the last several months, we have been building our lake. The construction is now complete and we are watching the lake fill up with water from our recent rains. Care was taken to create a natural looking lake, not a sink hole look.

Future plans include a boathouse, with pavilion and swim area. We are digging a well to assist in maintaining the water level of the lake.

We anticipate and hope that by summer we have enough water to start hooking fish that are already in the pond, and having other wildlife such as deer and turkey habitating this area.



## New Equestrian Building

Our 150 x 300 feet horse arena is moving towards completion. The arena will be hosting future rodeos, horse shows, dog shows and even concerts. Seating for over 1,500 is planned along with boarding for up to 100 horses, horse-back riding lessons, and help with trail riding.



Access to the arena is from Chapel Road West to Quiet Below the Storm then left on Show Horse Way. The arena is located just off Hwy 2 and 3 miles west of our main gate.