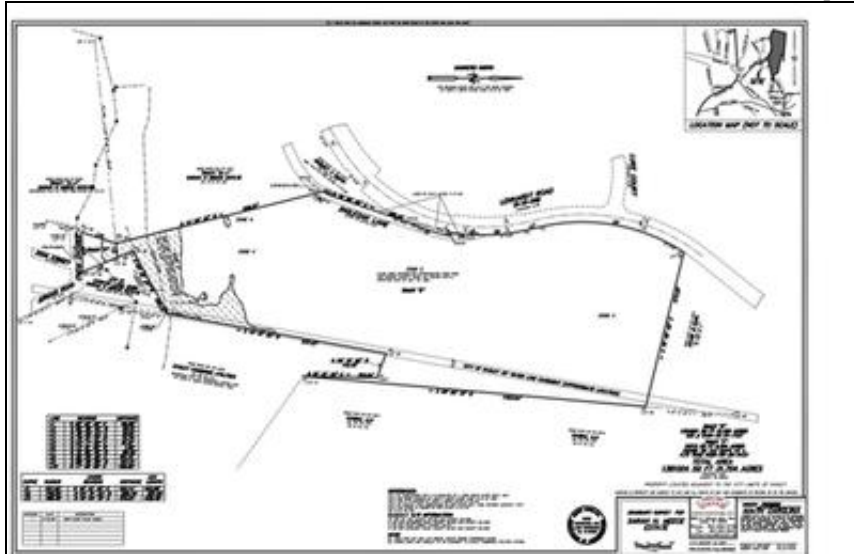


## Meares Auction Group



## 31.7 Acres Pickens County Easley Auction

### Property Specifications For Absolute Real Estate Auction - Sarah Meece

**County:** Pickens

**Address:** 152 Ingleoak Lane

**Baths:** 0.00

**Price:** Auction

**Description:** ABSOLUTE REAL ESTATE AUCTION

**Type of Property:** Acreage

**City:** Easley

**Bedrooms:** 0.00

**Acreage:** 31.7

**State:** South Carolina

**Zip:** 29640

Estate of Sarah Meece

ABSOLUTE Real Estate Auction - Easley, S.C. Approximately 31 +/- acres selling to the highest bidder at the auction! This is your opportunity to own open land.

On Site Inspection Begins: Saturday, April 10, 2010 at 9:00 AM EDT... Ends: Saturday, April 10, 2010 at 11:00 AM EDT

This property consists of approximately 31.7 Acres+/- with public water available. The property is not zoned at this time. Sewer service may be available in the future at this location!

This property will be sold in one tract only!

Larry J. Meares, BIC, SCAL 109, 864-444-1321

Lanny W. Balentine, SCAL 3694, 864-444-1325

**Directions:** From Downtown Easley, Take Highway 135 toward Dacusville, Go approximately 1 Mile and turn right on Glenwood Lane. Take a left on Lenhardt Lane, then Right onto Ingleoak Lane.

## Sellers Contact Information



**Meares Auction Group**  
Larry Meares  
315 Eastview Road  
Pelzer, SC 29669  
[www.mearesauctions.com](http://www.mearesauctions.com)  
864.947.2000  
800.689.5654

[Powered by LandsofAmerica.com](http://LandsofAmerica.com)

THIS INFORMATION BELIEVED ACCURATE BUT NOT WARRANTED