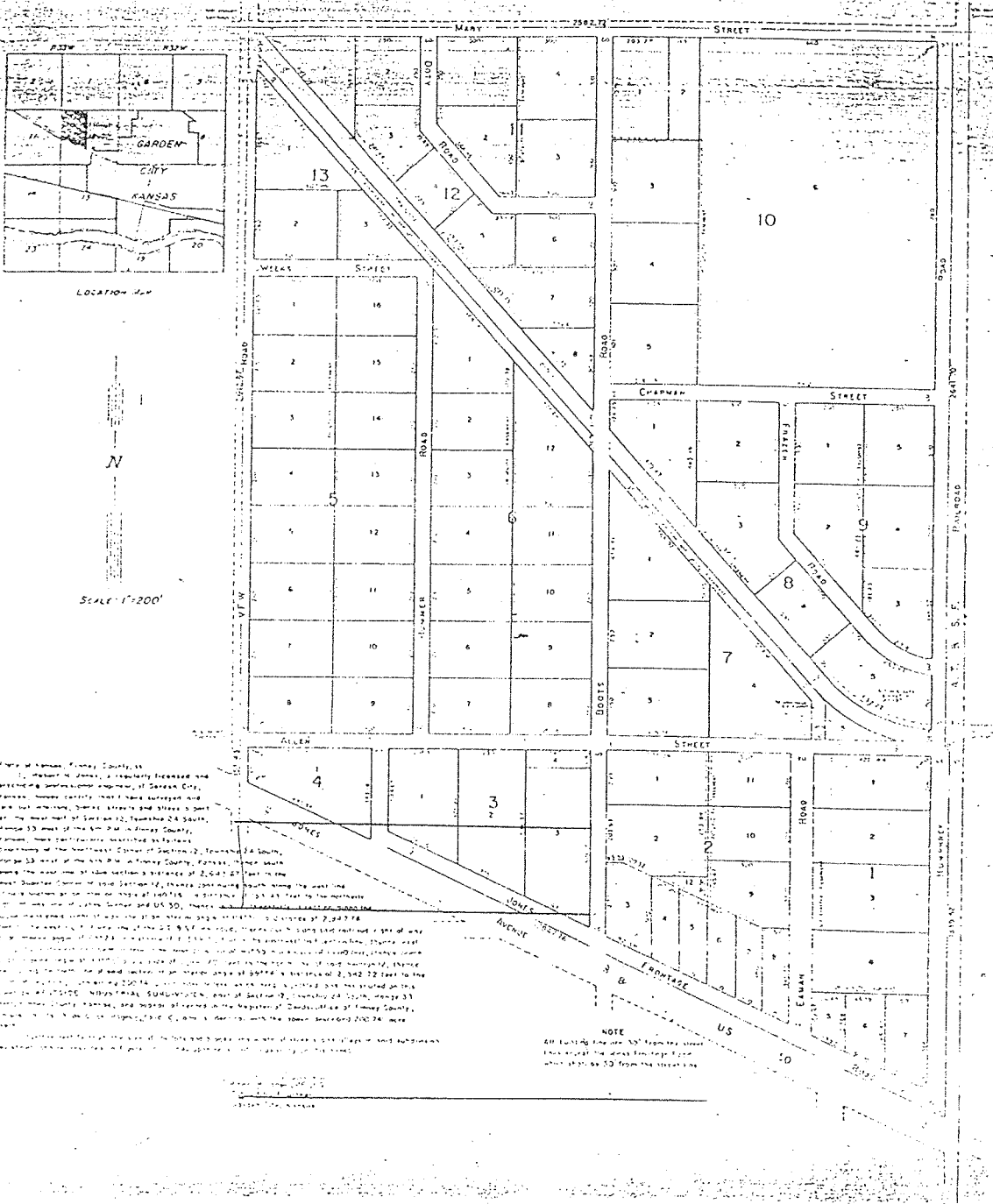


Transfer No.

Filed: January 26th, 1971.
Recorded: Plat Book 6, Page 8-10.

WESTSIDE INDUSTRIAL SUBDIVISION

PART OF
SECTION 12, TOWNSHIP 24 SOUTH, RANGE 33 WEST
FINNEY COUNTY, KANSAS



Wally, here is Block 3