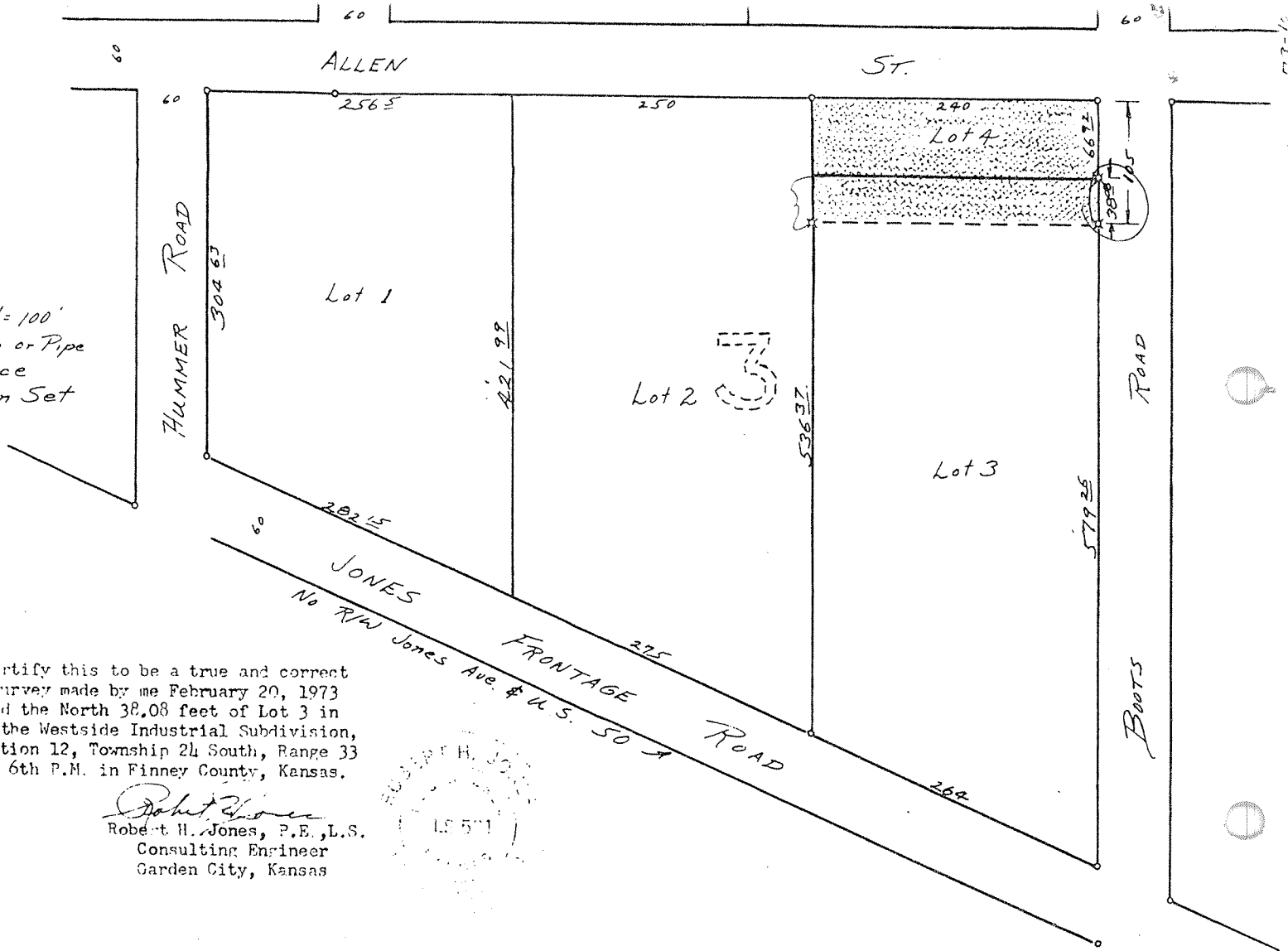


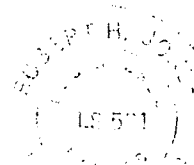


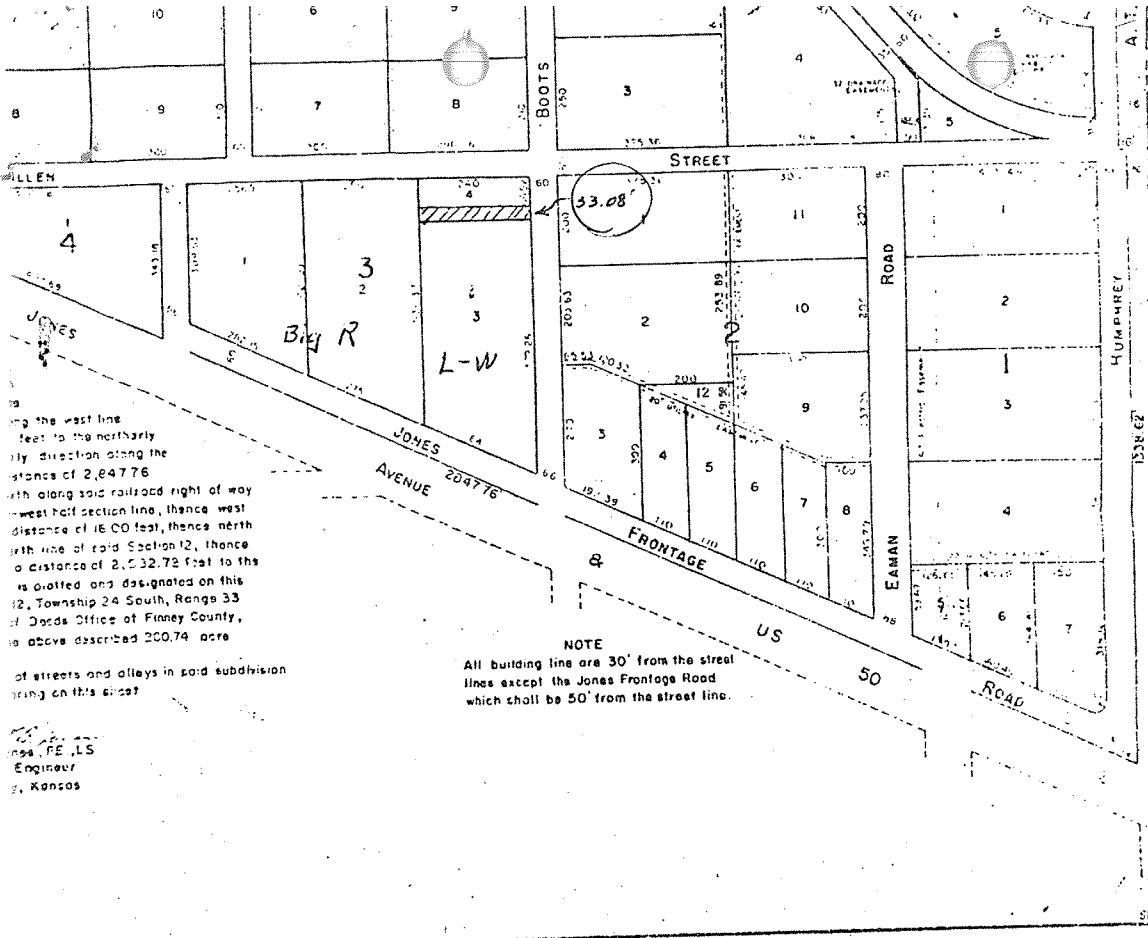
Scale: 1" = 100'
 o = Iron Pin or Pipe
 in place
 x = Iron Pin Set



I hereby certify this to be a true and correct plat of a survey made by me February 20, 1973 of Lot 4 and the North 38.08 feet of Lot 3 in Block 3 of the Westside Industrial Subdivision, part of Section 12, Township 24 South, Range 33 West of the 6th P.M. in Finney County, Kansas.

Robert H. Jones
 Robert H. Jones, P.E., L.S.
 Consulting Engineer
 Garden City, Kansas





along the west line
 feet to the north
 direction along the
 distance of 2,847.76
 along said railroad right of way
 west half section line, thence west
 distance of 16.00 feet, thence north
 with side of said Section 12, thence
 a distance of 2,532.72 feet to the
 is omitted and designated on this
 Township 24 South, Range 33
 of Dods Office of Finney County,
 is above described 200.74 acre

of streets and alleys in said subdivision
 being on this plat
 ENGINEER, L.S.
 Engineer
 Kansas

NOTE
 All building lines are 30' from the street
 lines except the Jones Frontage Road
 which shall be 50' from the street line.