

BUSINESS CLOSING • COMPLETE LIQUIDATION



Sullair Rotary Screw Air Compressor



Mitts and Merrill Hydraulic Keyseater



Caterpillar 4,600 Lb. Capacity Forklift

AIR COMPRESSORS

- Sullair Model LS-10 Rotary Screw Air Compressor, 30 HP, s/n ???
- Gardner Denver 25 HP, 3-Stage Air Compressor
- Ingersol Rand Model ESH, 60 HP Single Piston Air Compressor, s/n TEG-590
- Air Tek Smart Cycle Model SC-100 Refrigerated Air Dryer, s/n 97-7528G

FORK LIFT

- Caterpillar Model GC25K Fork Lift, s/n AT82D01618, 4,650 Lb. Cap., LP, Hard Tire, Side Shift, 3-Stage Mast, Cage

OVERHEAD CRANES

- 3 Ton Free Standing Crane, 6-Post, 48' X 21' Operating Area, 2-Rails, Equipped with 2-Ton Budget Elec. Hoist and 1/2-Ton Budget Elec. Hoist
- 2 Ton Free Standing Crane, 6-Post, 30' X 24' Operating Area
- 2-Ton Free Standing Crane, 4-Post, 23' X 18' Operating Area, Equipped with Budget 1/2 Ton Elec. Hoist
- 2-Ton Free Standing Crane, 4-Post, 20' X 24' Operating Area, Equipped with Budget 2-Ton Elec. Hoist
- 1-Ton Free Standing Crane, 4-Post, 28' X 18' Operating Area, Equipped with Budget 1-Ton Elec. Hoist
- 1-Ton Free Standing Crane, 4-Post, 15' X 26' Operating Area, 2 Rails, Equipped with (2) Budget 1/2 Ton Electric Hoists
- 1-Ton Free Standing Crane, 4-Post, 18 X 18' Operating Area, Equipped with Budget 1/2 Ton Elec. Hoist
- 1/2-Ton Free Standing Crane, 4-Post, 20' X 14' Operating Area, Equipped with Ingersol 1/2 Ton Elec. Hoist
- (40) Ceiling Mounted (Threaded Rod Drop) Crane Rails, Various Sizes and Capacities, Most with Hoists
- 2-Ton Abell Howe Floor Mounted Jib Crane, with Budget 1-Ton Elec. Hoist, 10' Arm
- 1/2-Ton Abell-Howe Floor Mounted Jib Crane, with Budget 1/2 Ton Elec. Hoist
- (3) 1/4-Ton Free Standing Jib Crane, with Budget 1/4 Ton Elec. Hoist
- (4) 1/2-Ton Wall Mounted Jib Cranes
- 2-Ton Wallace A-Frame Portable Gantry Crane, Adjustable Height, 18' Span, with 2-Ton Chain Hoist

TOOLING AND MACHINE ACCESSORIES

- Mills, Drills, Reamers, Taps, Dies, Carbide Inserts, Vises, Clamps, Micrometers, Calipers, Height Gages, Surface Plates, Cadillac Height Gage, Do-All Magna Sine, Grinding Wheels, Saw Blades, Angle Plates, Versa Digimatic Electronic Calipers, Instron Model M1 Portable Hardness Tester, Wilson Model M-3-4 Portable Hardness Tester, Diamond Wheels, Welding Wire, Welding Accessories, Precision Squares, Levels

TOOLING AND MACHINE ACCESSORIES - continued

- Keo Keyseater Set, Arbors, Tool Holders, Face Cutters, Rotary Tables, Dividing Head, Jacobs Chucks, Centers, Carbide Turning Tool Holders, Federal Bore Gages, Lathe Chucks, Vibraplane Table, Starrett and Weber Jo Blocks, Many Other Items

MISCELLANEOUS SHOP ITEMS

- Large Maintenance Area, Ladders, Steel Storage Racks, Cantilever Steel Racks, Lockers, Fans, Metal Cabinets, Stock Stands, Horses, Carts, Hose, Chain, Straps, Self Dumping Hoppers, Hooks, Binders, Fork Extensions, C-Clamps, Hand Tools, Power Tools, Air Tools, Economy Hi-Jacker Lift, Banding Carts, Dollies, Cardboard, Lumber, Lifting Magnets, Warehouse Steps, Transformers, Motors, Electrical and Hydraulic Maintenance Items, Triner Shipping Scale, Toro Model 421 Snowblower, Toledo Model 2191 Floor Scale, Hardware, Fastening Items, Helicoils, Thread Wrenches, Port-A-Powers, Bottle Jacks, Leeds and Northrup Potentiometer, Safety Clean Parts Washer, Binks Paint Guns, Ratchets, Slide Hammer, Bearing Pullers, Oil Pumps, Advance Floor Sweeper, Man Lift Basket, Wheel Barrells, Furnace Hooks, Ladles, Box Fans, Scaffolding, 36" X 76" Welding Table, Pallet Jacks, Spare Parts, Parts Machines, Many other Items

SCRAP STEEL

- Great Buying Opportunity, 100,000's of Pounds, Primarily Flat Bar Stock, Older Machines, Rails, Many Potential Lots

6 Available



Steel Storage Cube (6 Available)

THOMPSON Auctioneers, Inc.

Thinking of an Auction? Need an Appraisal? Know of a Plant Closure?
Call Steve Thompson or Bryan Harvey • 937-426-8446 • www.thompsonauctioneers.com

WORLD-CLASS KNIFE & BLADE MANUFACTURER!



PUBLIC AUCTION

THE WAPAKONETA MACHINE CO.

300 North Street • Wapakoneta, Ohio

THURS., FEB. 18 • 9:00 A.M.



LOCATION CLOSING COMPLETE LIQUIDATION!!!

Doosan Model V740M CNC Vertical Turning Center with Live Milling, *New 2005*

THOMPSON Auctioneers, Inc.
870 Routzong Rd.
Xenia, OH 45385

Pre-Sort First Class
U.S. POSTAGE
PAID
Dayton, Ohio
Permit No. 375

PUBLIC AUCTION

THE WAPAKONETA MACHINE CO.

300 North Street • Wapakoneta, Ohio

THURSDAY, FEBRUARY 18 • 9:00 A.M.

Inspection: Wednesday, February 17, 10:00 a.m. - 4:00 p.m.

FEATURING:

- 2005 Doosan CNC VTL with Live Milling
- Mighty Viper VMC4100 CNC Vertical Machining Center
- Mattison 36" X 72" Surface Grinder • Mattison 18" X 168" Surface Grinder
- Hill Acme 30" X 240" Surface Grinder • (4) Diamond 168" Face Grinders
- Complete Heat Treat Department • 42" Blanchard Grinder • (2) Bullard VTL's
- Toolroom • Tooling and Accessories • Large Maintenance Area
- 40+ Free Standing and Overhead Cranes

1,000's of Pounds of Scrap Metal -- Great Buying Opportunity



THOMPSON Auctioneers, Inc.

Steve Thompson, Auctioneer • 937-426-8446
thompsonauctioneers.com • Ohio License 63199566109



Mighty Viper Model VM4100 Long Bed CNC Vertical Machining Center

LOCATION CLOSING COMPLETE LIQUIDATION!!!



Mattison 36" X 36" X 72" Surface Grinder

WORLD-CLASS KNIFE & BLADE MANUFACTURER



PUBLIC AUCTION

THE WAPAKONETA MACHINE CO.

300 North Street • Wapakoneta, Ohio

THURSDAY, FEBRUARY 18 • 9:00 A.M.

Inspection: Wednesday, February 17, 10:00 a.m. - 4:00 p.m.

LOCATION CLOSING COMPLETE LIQUIDATION!!!

FEATURING:

- 2005 Doosan CNC VTL with Live Milling • Mighty Viper VMC4100 CNC Vertical Machining Center
- Mattison 36" X 72" Surface Grinder • Mattison 18" X 168" Surface Grinder • Hill Acme 30" X 240" Surface Grinder
- (4) Diamond 168" Face Grinders • Complete Heat Treat Department • 42" Blanchard Grinder • (2) Bullard VTL's • Toolroom
- Tooling and Accessories • Large Maintenance Area • 40+ Free Standing and Overhead Cranes

1,000's of Pounds of Scrap Metal -- Great Buying Opportunity



Exothermic Natural Gas Batch Heat Treat Furnace



Blanchard Model 22D-42 Rotary Surface Grinder



Hill Acme 30" X 30" X 240" Surface Grinder

DIRECTIONS: From I-75 in West Central Ohio, take Exit 111, Bellefontaine St./Rt. 501. Go west off ramp on Bellefontaine St., 1-1/10 mile to Water St. Turn right (north) onto Water St, Go 1/10 mile to North St. Turn left (west) onto North St. Auction Site immediately on Right Hand Side, 300 North St., Wapakoneta, Ohio. Watch for Signs!

TERMS: Everything is being sold on an "As is, where is, in place basis" with no warranties or guarantees of any kind. It is the buyer's responsibility to inspect before bidding. Everything must be paid for in full on day of auction with cash, check with proper ID, Visa, MC or Discover. A 12% Buyer's Premium is in effect for onsite buyer's. A 14% Buyer's Premium with credit card purchases. Removal of purchases is the buyer's responsibility, expense and risk. **IF YOU CANNOT ATTEND:** Bid Live, Online at www.bidspotter.com or Fax to our office the items you want to bid on with your max price and we will bid on your behalf. Please include a credit card number for downpayment in the event you are the successful bidder. Fax #: (937)376-8328

BID-SPOTTER TERMS: A 15% buyer's premium is in effect if you bid through bidspotter.com. All other terms of on-site buyers apply to bidspotter bidders.



THOMPSON Auctioneers, Inc.

Steve Thompson, Auctioneer
www.thompsonauctioneers.com • 937-426-8446



PUBLIC AUCTION



Sansen 20" Rotary Surface Grinder



Cincinnati Heald 273A Internal Grinder

**LOCATION CLOSING
COMPLETE
LIQUIDATION!!!**

THE WAPAKONETA MACHINE CO. 300 North Street • Wapakoneta, Ohio

CNC VERTICAL TURNING CENTER WITH LIVE MILLING

- **Doosan** Model V740M CNC Vertical Turning Center, s/n IJV1003, New 2003, Fanuc 21i-TB CNC Control, Live Milling, C-Axis, 29.1" Capacity, 14.9" X Axis Travel, 29.9" Z Axis Travel, 40/50 HP Drive, 17 3/4" 3-Jaw Power Chuck, Also Equipped with Walker 24" Electro Magnetic Chuck, Cool Jet High Pressure Coolant System, Chip Conveyor, Numerous Tool Holders including Live Milling Holders

CNC LONG BED VERTICAL MACHINING CENTER

- **Mighty Viper** Model VMC4100 CNC Vert. Machining Center, s/n 003642, New 2001, Mitsubishi Meldas 625A CNC control, 44" X 165" Bed, 162" X 40" X 42" Travels, 25 HP, 50 Taper, 32 ATC, Chip Conveyors, Chip Blaster Coolant System

AUTOMATIC HORIZONTAL SURFACE GRINDERS

- **Mattison** 36" X 36" X 72" 3-Axis Surface Grinder, s/n 24147, New 1981, 20 HP, 6" X 20" Wheel, (2) 36" X 36" Electro Magnetic Chucks, Digital Read Out, Radius Dresser, Hanson Hyd. Chiller, Coolant System
- **Mattison** 18" X 18" X 168" 3-Axis Hydraulic Surface Grinder, s/n 18152, 30 HP, 4-Piece Electro Magnetic Chuck, Coolant



Heald Rotary Surface Grinder (1 of 5)

5 Available

AUTOMATIC HORIZONTAL SURFACE GRINDERS - continued

- **Mattison** 18" X 96" 3-Axis Hydraulic Surface Grinder, s/n 19392
- **Hill-Acme** Vert. Spindle 3-Axis Hyd. Surface Grinder, 30" X 30" X 240", s/n 670G, (4) Piece Electro Magnetic Chuck (30" X 60" Ea), 100 HP, Coolant

ROTARY SURFACE GRINDERS

- **Blanchard** Model 22D-42 Rotary Surface Grinder, s/n 13895, New 1973, 22" Segmented Wheel, 42" Electro Magnetic Chuck, Coolant System, 50 HP, External Coolant System

INTERNAL GRINDER

- **Cincinnati/Heald** Model 273A Internal, s/n 46965, 18" Diameter 8-Jaw Chuck, Heald Red Head, Sine Bar Attachment, Push Button Controls, Dresser, Coolant Tank and Pump

LARGE CAPACITY UNIVERSAL ID/OD CYLINDRICAL GRINDER

- **Landis** Model 3RH Universal ID/OD Grinder, s/n 840-56, 30" X 48" Cap., Drop-Down ID Attach., 30" Diameter Chuck, 16" Diameter Grinding Wheel

TOOL ROOM ROTARY SURFACE GRINDERS

- **Heald** Model 261-16 Rotary Surface Grinder, s/n 35940, 16" Diameter Mag. Chuck, Digital Read Out
- **Heald** #25A Rotary Surface Grinder, s/n 14692, 24" Diameter Magnetic Chuck, Coolant
- **Heald** #25A Rotary Surface Grinder, s/n 21849, 24" Diameter Magnetic Chuck, Coolant
- **Heald** #2 Rotary Surface Grinder, s/n 201, 16" Diameter Magnetic Chuck
- **Sundstrand** Model A-12 Rotary Surface Grinder, s/n 8238, 13" Diameter Magnetic Chuck, Coolant
- **Sansen** Model SS-5F Rotary Surface Grinder, s/n 2398-20, 20" Diameter Magnetic Chuck, Marposs Gaging

PLANER MILL

- **Giddings and Lewis** Hypro "Futurmill" Planer Mill, s/n 7635, 42" X 42" X 168" Table, Equipped with 18" X 156" Electro Magnetic Chuck, 50 HP DC Motor, 50 Taper Spindle Drive, 43" Between Housings, 30" Max. Under the Rail, 30 HP Futurmill Head, Movable Ram, Way Covers



Mattison 18" X 18" X 196" Surface Grinder



Giddings and Lewis Hypro "Futurmill" Planer Mill



Marvel #81 Tilt Frame Vertical Band Saw (1 of 2)



Unitek Tap Disintegrator



Landis 30" X 48" Universal ID/OD Grinder

2 Available

VERTICAL TURRET LATHES

- **Bullard** 54" Vertical Turret Lathe, s/n 15680, 54" Universal 4-Jaw Chuck, 5-Position Turret, Side Head
- **Bullard** 36" Vertical Turret Lathe, s/n 20803, 36" 4-Jaw Independent Chuck, 5-Position Turret, Side Head

LARGE CAPACITY FACE GRINDERS/KNIFE GRINDERS

- **Diamond** 14" Heavy Duty Face Grinder/Knife Grinder, 168" Table Platen Length, 308" Overall Bed Length, 30" Diameter Segmented Wheel, (2) 10" X 84" Electro-Magnetic Chucks, Coolant
- **Diamond** 14" Heavy Duty Face Grinder/Knife Grinder, 192" X 24" Table Platen Size, 481" Overall Bed Length, 30" Diameter Segmented Wheel, (1) 10" X 86" Electro-Magnetic Chuck, (2) 10" X 62" Electro Magnetic Chucks, Coolant, 50 HP
- **Diamond** 7" Heavy Duty Face Grinder/Knife Grinder, 24" X 48" Table Platen Size, 136" Overall Bed Length, 30" Diameter Segmented Wheel, Coolant

TILT FRAME VERTICAL BAND SAWS

- **Marvel** Model 81-8/M5-S1 Tilt Frame Vertical Band Saw, s/n E-291188, 1" Blade, Hyd. Head Tilt, Coolant
- **Marvel** Model 81/M4/M2 Tilt Frame Vertical Band Saw, s/n D-722, 1" Blade, Hyd. Head Tilt, Coolant

AUTOMATIC HORIZONTAL BAND SAWS

- **Hem** Model 1200LAR Automatic Horizontal Band Saw, s/n 216184VB, 15" X 20" Cap., 1.5" Blade, 5 HP, Infeed Conveyor, Coolant
- **Do-All** Model C-57 Automatic Horizontal Band Saw, s/n 96-55150, 12" X 16" Capacity, Coolant

VERTICAL BAND SAWS

- **Do-All** Model 16-3 Vertical Band Saw, s/n 50-55353, Blade Welder, 16" Capacity
- **Do-All** Model ML, 16" Vertical Band Saw, s/n 447007, with Blade Welder, 16" Capacity

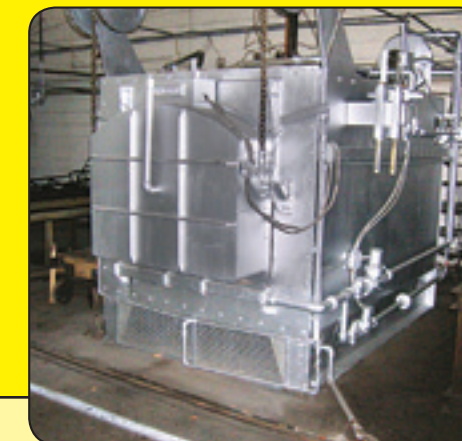
KEYSEATERS

- **Mitts and Merrill** #3 "Giant" Hydraulic Keyseater, s/n KM-7723, 24" X 24" Table, 2" Capacity
- **Baker** Model #00 Keyseater, 16" X 16" Capacity

HEAT TREAT DEPARTMENT

- **Exothermics** Natural Gas Pass Through Heat Treating Furnace, (10) Burners, 6' X 5' Opening, 26' Overall Length, 1,850 Degree Max., Controls, Recorder
- **Lindberg** Model 11-RO-484830-18AF Heat Treat Furnace, s/n 24077, 1,800 Degree Max., Nat. Gas, 48" X 48" X 30" Interior, Hydraulic Door, Controls, Recorder
- **Lindberg** Model RO-367221-A Heat Treat Furnace, s/n 17628, 1,850 Degree Max., Natural Gas, 72" X 84" X 72" Interior, Hyd. Door, Roller Top, Controls, Recorder
- **Lindberg** Furnace Car, Electric, with 40' Track
- **Exothermics** Model Eclipse 6000SP98LT-IU Air to Water Heat Exchanger, s/n 796785A, 13' X 48" X 42" Dimensions, Centrifugal Pump, Blower, Controls
- **J.L. Becker** Natural Gas Heat Treat Furnace, 1,200 Degree Max., 54" X 96" X 78" Interior, Manual Delivery Cart, Pneumatic Door, Controls, Recorder

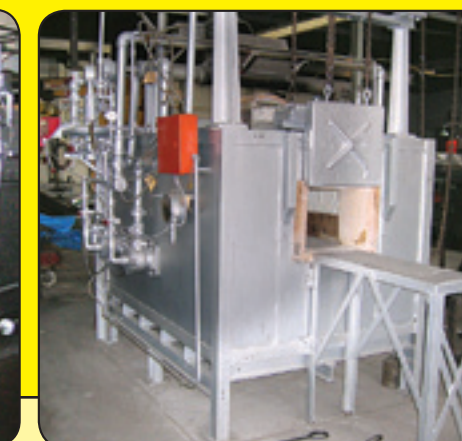
WORLD-CLASS KNIFE & BLADE MANUFACTURER



Lindberg Heat Treat Furnace



Bank View, Lindberg Heat Treat Furnaces



Natural Gas Heat Treat Furnace

HEAT TREAT DEPARTMENT - continued

- **Natural Gas Heat Treat Furnace**, Mfg. Unknown, 1,100 degree Max., 60" X 79" X 55" Interior, 16" X 21" Door Opening, (4) Burners, Controls, Recorder
- **Hevi-Duti** Model HD-18-48-13-CW Heat Treat Furnace, 42" X 72" X 42" Interior
- **Ajax Electric Salt Bath Furnace**, Model HC, s/n 4258, 220" X 27" X 22" Deep, Sliding Cover, Switchgear, (21) 110-Kw Transformers, Controls, Recorder
- **Ajax Electric Salt Bath Furnace**, Model D150KW, s/n 2041, 240" X 44" X 36" Deep, 1,100 Degree Max., Steel Shell, Refractory Lined, Rolling Cover, (2) Transformers, Controls
- **Natural Gas Salt Bath Furnace**, Mfg. Unknown, 19'6" X 5'5" X 3' Deep, (6) Burners, Steel Shell, Refractory Lined, Pneu. Cover, Blower, Controls
- **Natural Gas Salt Bath Furnace**, Mfg. Unknown, 31'9" X 5' X 39" Deep, (8) Burners, Open Top, Controls
- (3) Oil Quench Tanks, Centrifugal Pumps, Plumping, Shell and Tube Exchanger, Ansil Fire Suppression, Controls, Holding Tanks

MILLING MACHINES

- **Cincinnati** Hypowermatic 500-2614 Horizontal Mill, s/n P-151262, 22" X 168" Magnetic Chuck, 26" X 202" Table, 168" Table Travel, 30 HP, 50 Taper, Rise and Fall, Arbor Supports
- **Kearney & Trecker** Model 550 TF-20 Vertical Mill, s/n 1-9630, 20" X 96" Table, 25 HP, 3-Axis Digital Read Out, 50 Taper
- **Kearney & Trecker** Model 525TF Vertical Mill, s/n 9-8006, 18" X 96" Table, 20 HP, 3-Axis Digital Read Out, 50 Taper
- **Kearney & Trecker** #3K Horizontal Mill, s/n 14-4230, 15" X 64" Table, 50 Taper
- **Gorton** Model 3-34 Vertical Mill, s/n 32211, 14" X 62" Table, Newall 3-Axis Digital Read Out, Factory Universal Vertical Head

MISCELLANEOUS GRINDERS

- **Cincinnati** #2 Tool and Cutter Grinder, s/n 102T1U-383, Misc. Tooling
- **Thompson** 6" X 18" Hydraulic Surface Grinder, s/n 541751, 2-Axis
- **Royal Oak** Model R-O Cutter Grinder, s/n 530-G, Universal Form Relieving Fixture
- **Cincinnati** Spiropoint Model 1000 Drill Pointer, s/n 1LG6P5H-36
- **Rogers** Model CC4 Circular Knife Grinder, s/n 144

AUTOMATIC CHUCKER

- **Warner & Swasey** Model 3AC Automatic Chucker, Series M-3950, s/n 243567, 4 1/2" Capacity, 40 HP, 2-Slide, Misc. Tooling

MISCELLANEOUS CNC MACHINERY

- **Cincinnati Milacron** Model 20VC-2000 CNC Vertical Machining Center, s/n 49344, New 1989, Acramatic 900 CNC Control, 26" X 84" Table, 26" X 80" Travels, 30 Position ATC, 45 Taper, Coolant
- **Burgmaster** Model 3BHT-SH-TC CNC Vertical Turret Machining Center, s/n 3394T, Fanuc 0-M CNC Control, 36" X 192" Table, 36" Vertical Head Travel, Programmable 8-Position Tool Turret
- **SMT Pullmax** Model ST10-CNC220 CNC Turning Center, s/n 28-530616-30, SMT CNC 220 Control, 8-Position Turret, 12" 3-Jaw Chuck, Tailstock, Miscellaneous Tooling

RADIAL DRILLS

- **Cincinnati Bickford** 4' X 9" Radial Arm Drill, s/n 1R3428, Box Table
- **Cincinnati Bickford** 3' X 9" Super Service Radial Arm Drill Press, Box Table
- **Cincinnati Bickford** Portable Radial Arm Drill, 60" Vertical Travel
- **Morris** Radial Arm Drill, 3' X 11", s/n MC307-A42, Box Table

MISCELLANEOUS MACHINERY

- **Ridgid** #535 Pipe Threader, Misc. Dies
- **Unitek** Model 300-S1 Tap Disintegrator, s/n 121889, Controls
- **Rosemont** Model Burr LL Burr Bench, s/n B-191
- **Flex-Arm** Pneumatic Tapping Arm
- **Stone** Model M120 Abrasive Saw, s/n 0475, 20"
- **Cincinnati** Model 102 Abrasive Saw, s/n 205226
- **Jones & Lamson** #5 Turret Lathe, s/n 6018, Bar Feed, Misc. Tooling
- **Morey** Vertical Shaper, s/n M-153-12VS, 24" Rotary Table, Pneu. Vise
- **Lodge and Shipley** 18" X 30" Engine Lathe
- **Delta** 14" Single Spindle Drill Press, s/n 111-2571
- **Cincinnati** 24" Heavy Duty Shaper, s/n 14321, Block Table, Vise
- **Wilson Rockwell** Model 4JRBB Hardness Tester, s/n 6627
- **Wilson Rockwell** Model 3HM Hardness Tester, s/n 3H-0-260HM
- Screw Type Straightening Press, Mfg. Unknown
- **Airco** 300 Amp Tig Welder, s/n HH061065, Chiller
- **Peerless** Mechani-Cut Power Hack Saw, s/n 40-171, 14" X 14"
- **Peerless** Model U-3620 Power Hack Saw, 6" X 6" Capacity
- **Kasto Racine** Model E8S-450U Power Hack Saw
- **Marvel** Model 9A Power Hack Saw, 10" X 10"



Can't attend the auction? Bid live on-line at www.bidspotter.com

THOMPSON Auctioneers, Inc.