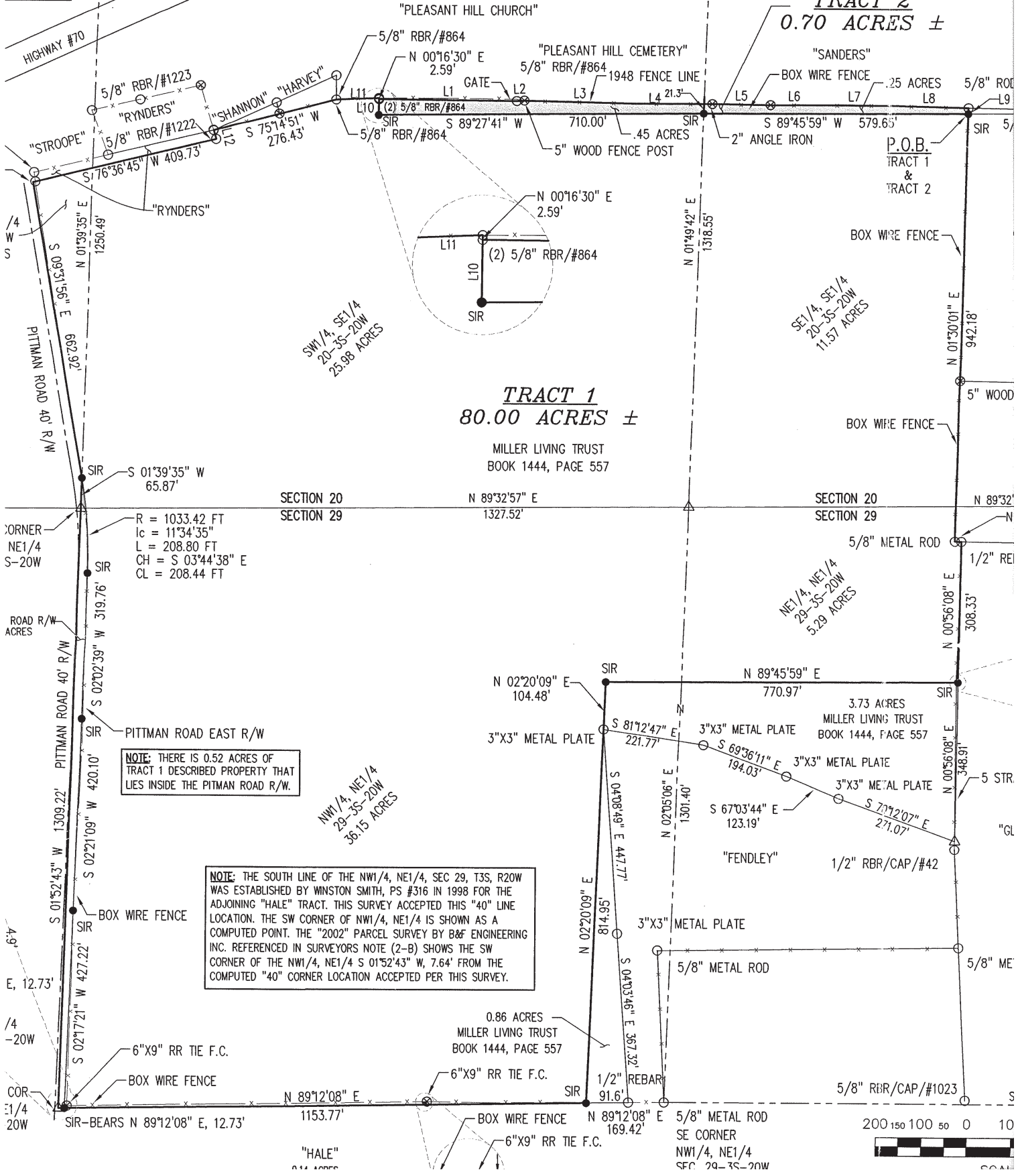


EST CORNER  
NW1/4, SE1/4  
29-3S-20W

TO LAND  
BOOK 1984;  
NOTE 2-B.

NOTE: TRACT 2-(0.70 ACRES ±) IS THAT TRACT OF  
AND OCCUPIED BY THE MILLER FAMILY SINCE 1948,



### TRACT 1 80.00 ACRES ±

### TRACT 2 0.70 ACRES ±

MILLER LIVING TRUST  
BOOK 1444, PAGE 557

SECTION 20  
SECTION 29

NOTE: THERE IS 0.52 ACRES OF  
TRACT 1 DESCRIBED PROPERTY THAT  
LIES INSIDE THE PITTMAN ROAD R/W.

NOTE: THE SOUTH LINE OF THE NW1/4, NE1/4, SEC 29, T3S, R20W  
WAS ESTABLISHED BY WINSTON SMITH, PS #316 IN 1998 FOR THE  
ADJOINING "HALE" TRACT. THIS SURVEY ACCEPTED THIS "40" LINE  
LOCATION. THE SW CORNER OF NW1/4, NE1/4 IS SHOWN AS A  
COMPUTED POINT. THE "2002" PARCEL SURVEY BY B&F ENGINEERING  
INC. REFERENCED IN SURVEYORS NOTE (2-B) SHOWS THE SW  
CORNER OF THE NW1/4, NE1/4 S 01°52'43" W, 7.64' FROM THE  
COMPUTED "40" CORNER LOCATION ACCEPTED PER THIS SURVEY.

