

This is an agricultural subdivision and is exempt from the provisions of the Subdivision Act of 1968.

The subdivision shown herein has been reviewed and approved by the undersigned in accordance with existing regulations, and may be committed to record.

Subdivision Agent

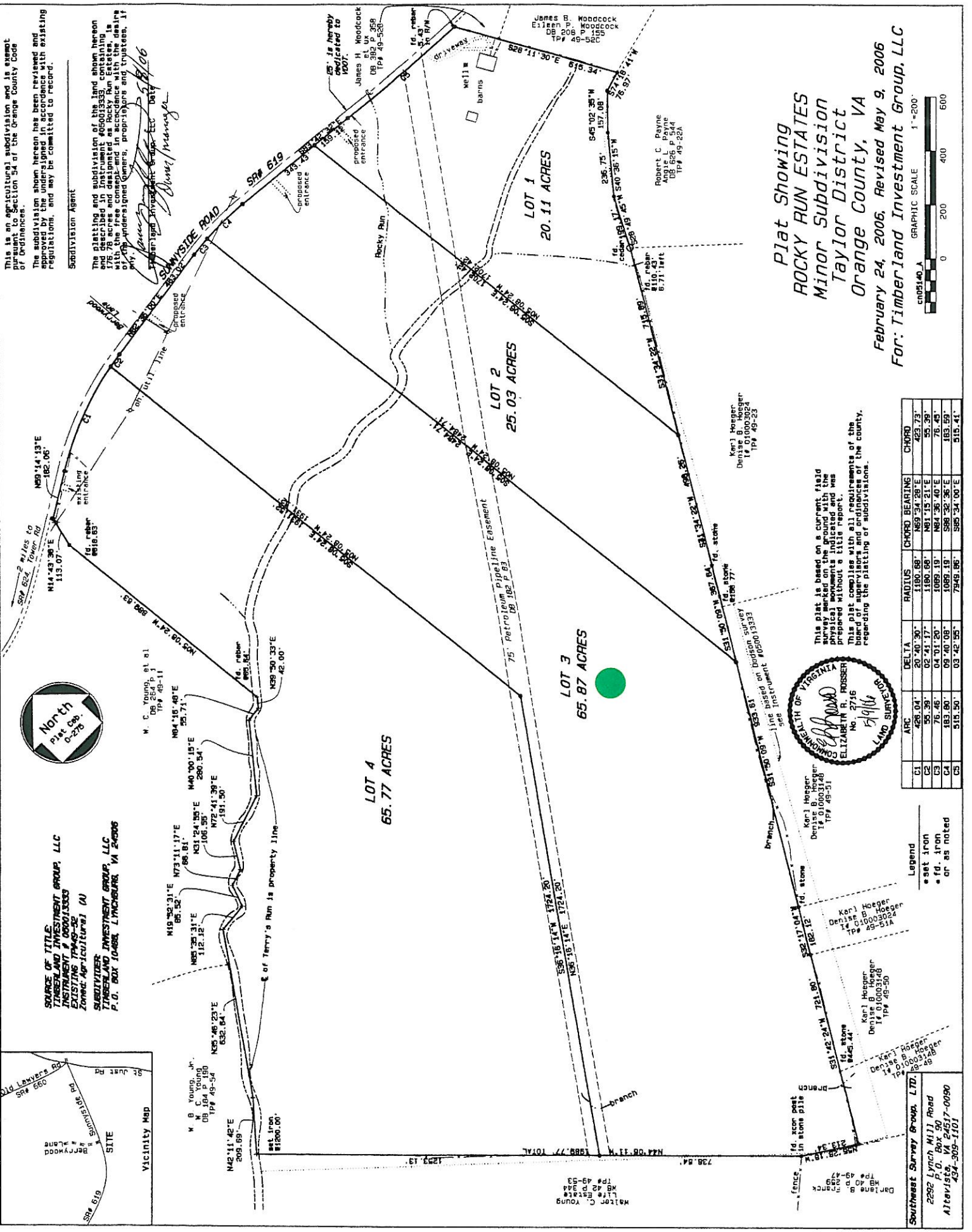
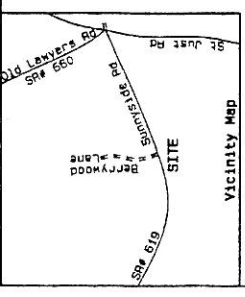
The platting and subdivision of the land shown herein and described in instrument #06001333, containing 176.78 acres and designated as Rocky Run Estates, is hereby approved in accordance with the provisions of the Subdivision Act of 1968 and the provisions of the Agricultural Subdivision Act of 1968, and the provisions of the Agricultural Subdivision Act of 1968, and the provisions of the Agricultural Subdivision Act of 1968.

James H. Woodcock
 James H. Woodcock
 09.382 P. 358
 174.49-326



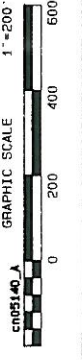
SOURCE OF TITLE
 TIMBERLAND INVESTMENT GROUP, LLC
 2282 Lynch M/JJ Road
 Aitceville, VA 24517-0090

SUBDIVISOR
 TIMBERLAND INVESTMENT GROUP, LLC
 2282 Lynch M/JJ Road
 Aitceville, VA 24517-0090



Plat Showing
ROCKY RUN ESTATES
 Minor Subdivision
 Taylor District
 Orange County, VA

February 24, 2006, Revised May 9, 2006
 For: Timberland Investment Group, LLC



This plat is based on a current field physical monuments indicated and was prepared without a title report.

This plat complies with all requirements of the board of supervisors and engineers of the county, regarding the platting of subdivisions.



ARC	DELTA	RADIUS	CHORD BEARING	CHORD
01	456.04'	20'40'30"	N89°14'13"E	423.73'
02	55.39'	02'41'20"	N81°15'51"E	55.29'
03	76.46'	04'01'20"	N84°36'40"E	76.29'
04	183.80'	09'40'08"	S88°32'36"E	183.59'
05	515.50'	03'42'55"	S85°34'00"E	515.41'

Legend
 • set iron
 • fd. iron
 • cr. as noted

Southwest Survey Group, LTD.
 2282 Lynch M/JJ Road
 Aitceville, VA 24517-0090
 434-309-1101