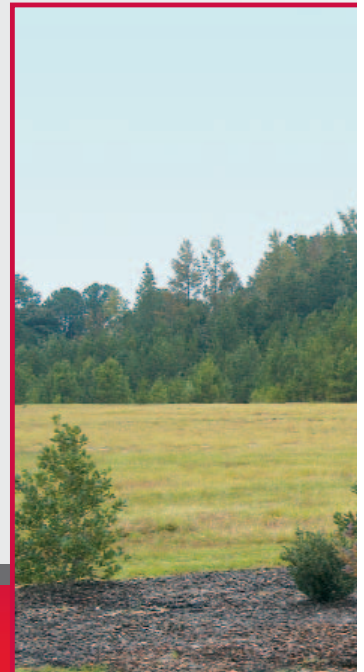
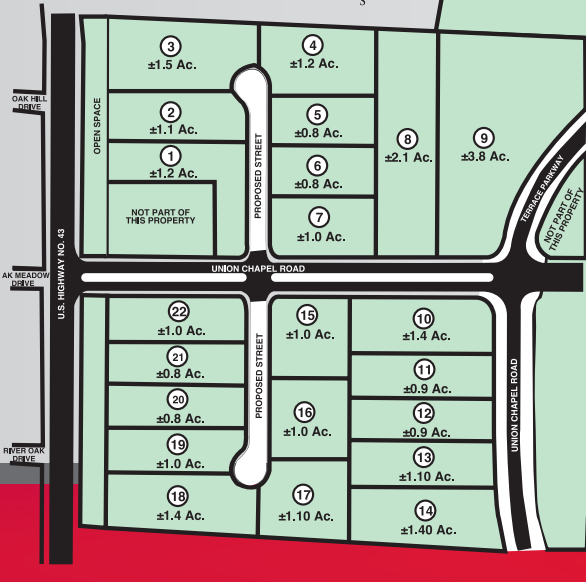




TERRACE AT NORTHCREEK SUBDIVISION

**±75 ACRES
Multi-Family/Residential**





Tuscaloosa, Alabama, has jumped from Money Magazine's list of the country's best places to live in recent years to CNN's Fortune Small Business Magazine's list of the top 10 places to launch a small business in 2009. Such major feats in tough economic times demonstrate Tuscaloosa does have it all — great schools, affordable housing, reasonable living costs, decent wages, excellent workforce and low crime rate.

Home to the University of Alabama, Mercedes-Benz US International and Dreamland Barbeque, Tuscaloosa takes pride in its historic theater, galleries, museums, antebellum homes, golf courses, rivers and numerous lakes.

The opportunity to capitalize on the diversity of this thriving community, where the population ranges from college students to retirees, is presented at 100± picturesque acres approximately seven miles from the University of Alabama campus. Highly visible from its location on U.S. Highway 43, this spectacular property features 25± commercial acres complete with an infrastructure which includes water, sewer, power and gas. Also included are 75± residential acres.



REGISTRATION: 12 NOON • AUCTION: 2 P.M.

