



Cherry Office Furnishings



Cherry Office Furnishings



Konica Copier



H.P. Plotter

**MISCELLANEOUS TOOLS & EQUIPMENT**

- (20) Various Knaack & Rigid Gang Boxes; Assorted Styles;
- (28) Werner Model 2616 Aluminum walk boards; 28' wide x 16' long;
- XTREME Flow 2 post Carlift; 11,000 lb. capacity; New 2003.
- Mag Drills; Pneumatic Jack Hammers; Clevis's; hooks; Oxy/ACET Carts, hoses, torches, regulators; Numerous "Big Red" Hid. Jacks up to 50 ton capacities; Enerpac Port-a-powers; Numerous Chain Hoists; Come-a-longs; Spud Bars; Sledges; Pipe Wrenches;
- US General 7.5hp upright A/C.
- Large Quantity of Pallet Shelving; Mostly Interlake Style, 12' tall x 10-12' beams; 42" front to Back; Taller uprights as well;
- Huge quantity of PERRY Scaffolding, Baker type; Approx 80 up-rights 6' tall with numerous safety rails and aluminum platforms; Will be sold as a package deal;

**MISCELLANEOUS TOOLS & EQUIPMENT - continued**

- Small Quantity of Biljax Scaffolding;
- Werner Step ladders and Extension Ladders;
- Large Quan of Power tools, Hilti, Milwaukee, Ramset; & More;

**I-BEAMS • SCRAP • RR BRIDGE**

- Large Quantity of I-beams; 1 beams taken from RR Bridge;

**BEAUTIFUL CHERRY OFFICE FURNISHINGS • COPIER &**

- Executive Wrap-a-round Cherry Office furnishings; 2 & 4 dr. cherry lateral files, hutches; receptionists desks; credenzas; side chairs, exec. High back swivel arm chairs; Break Room Equipment;
- Copier, Wide Format Blue print Copier;



Railroad Bridge



Steel I-Beams

BY ORDER OF SECURED LENDER

# PUBLIC AUCTION

**P.A.K. & RIDGE RAILROAD CONSTRUCTION**

3140 Homeward Way • Fairfield, Ohio 45014

**THURSDAY, NOVEMBER 19 • 9:00 A.M.**



**THOMPSON Auctioneers, Inc.**

870 Routzong Rd.  
Xenia, OH 45385

Pre-Sort First Class  
U.S. POSTAGE  
**PAID**  
Dayton, Ohio  
Permit No. 375

**PUBLIC AUCTION**

**P.A.K. & RIDGE RAILROAD CONSTRUCTION**

3140 Homeward Way • Fairfield, Ohio 45014

**THURSDAY, NOVEMBER 19 • 9:00 A.M.**

Inspection: Wednesday, November 18 • 10:00 a.m. - 4:00 p.m.

**FEATURING**

- Trucks • Bobcat Mini-Excavator • Cat Skid Steer • Link Belt Crane
- (7) Trailer-Mounted Air Compressors • Miller Diesel Welder/Generators
- Genie Boom Lifts • Alum. Semi-Trailer • Equipment Trailers • Cat Forklift
- Large Quantity Hydraulic Jacks • Scaffolding • Alum. Walk Boards
- Large Quantity of Steel I-Beams & RR Bridge • Gang Boxes
- Skid Steer Attachments • Power Tools



Can't attend this auction?  
Now you can bid from anywhere!

**THOMPSON Auctioneers, Inc.**

Steve Thompson, Auctioneer • 937-426-8446  
www.thompsonauctioneers.com • Ohio License #63199566109



Bobcat Mini-Excavator



Ford F-350 Club Cab

# PUBLIC AUCTION

By Order of Secured Lender

**P.A.K. & RIDGE RAILROAD CONSTRUCTION**

3140 Homeward Way • Fairfield, Ohio 45014

**THURSDAY, NOVEMBER 19 • 9:00 A.M.**

Inspection: Wednesday, November 18, 10:00 a.m. - 4:00 p.m.

**FEATURING:**

- Trucks • Bobcat Mini-Excavator • Cat Skid Steer • Link Belt Crane
- (7) Trailer-Mounted Air Compressors • Miller Diesel Welder/Generators • Genie Boom Lifts
- Alum. Semi-Trailer • Equipment Trailers • Cat Forklift • Large Quantity Hydraulic Jacks • Scaffolding
- Alum. Walk Boards • Large Quantity of Steel I-Beams & RR Bridge • Gang Boxes • Skid Steer Attachments • Power Tools



Ford F-350 Dually



(1) of (2) JLG Scissor Lifts



TCM 4300 Lb. Forklift

**DIRECTIONS:** From I-75 & I-275 on the North Side of Cincinnati, Go West on I-275 to Route 4 and go north on Route 4. Go 2.8 miles north on route 4 to Homeward Way & Go Right to the auction site ¼ mile.

**TERMS:** Everything is selling on an "As is, Where is, In Place" basis with No warranties or guarantees of any kind; It is the buyer's responsibility to inspect before bidding; There is a 10% buyer's premium in effect for this auction. A 13% Buyer's Premium with credit card purchases. Payment is to be made in full day of auction with cash, check, Visa, MasterCard or Discover; Removal is the buyer's responsibility, expense and risk.

**BID-SPOTTER TERMS:** If bidding on the internet thru www.bidspotter.com, the terms are: A 15% Buyer's Premium is in effect. Internet bidders must register with a credit card. If you are the successful bidder your credit card will be charged as follows: For amounts less than \$5,000, the entire balance is due immediately with your credit card. For amounts greater than \$5,000, a 25% deposit will be due immediately and the remaining balance is due within 48 hours either by cash, check, Visa, MC or Discover, or wire transfer.

**IF YOU CANNOT ATTEND:** Bid Live, Online at www.bidspotter.com or Fax the items you want to bid on with your max price and we will bid on your behalf. Please include a credit card number for downpayment in the event you are the successful bidder. Fax #: (937)376-8328

**THOMPSON Auctioneers, Inc.**

Steve Thompson, Auctioneer • 937-426-8446  
www.thompsonauctioneers.com • Ohio License #63199566109



# PUBLIC AUCTION • BY ORDER OF SECURED LENDER

## P.A.K. & RIDGE RAILROAD CONSTRUCTION



JLG Boom Lift



Allis Chalmers Rough Terrain Fork Lift



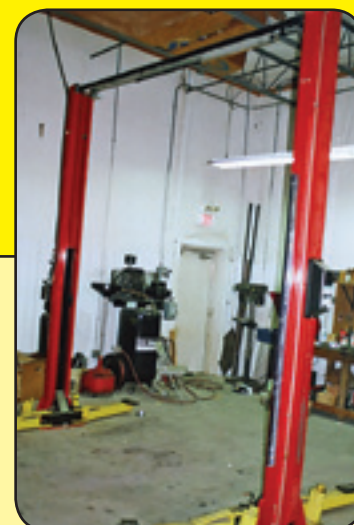
Cat Skid Steer



Genie Scissor Lift



Genie Boom Lift



X-Treme Flow 11,000 Lb. 2-Post Lift

### EXCAVATION EQUIPMENT • CRANE • FORKLIFTS

- 1999 Bobcat/Ingersoll Rand Model 337 Mini-Excavator, Rubber Track, Kubota 2.2 Liter Diesel, EROPS; Vin 515412186
- Cat Model 246 Skid Steer, Enclosed Cab, Diesel, Rubber Tire with Steel Track.. 2332 hrs. Vin: 5SZ03116
- Large Quantity of Skid Steer Attachments; Brooms, Drill; Fork; blade & More
- Link Belt Crane Model HC108B, S/N 9IGH2465, 1965, 40 ton capacity, Hyd. outriggers, Hook Block, 75' of boom, Cummins diesel for Crane & Driving Engine.



Link Belt Crane, 40 ton capacity

### EXCAVATION EQUIPMENT • CRANE • FORKLIFTS - continued

- TCM Model FCG25-3HL Forklift, 4300 lb. capacity, Cushion Tire, LP gas, 3-stage mast, Side Shift, 42" Forks, 408 hrs.
- Allis Chalmers 600 Series Rough Terrain Forklift, Gas Engine, Manual Trans. 4,000 lb. capacity, s/n 632.

### AIREAL LIFT PLATFORMS

- JLG Model 1930ES Elec. Scissor Lift; New 2008, 18'8" Platform Height; 500 lb. capacity; 77 hrs. Extendable Platform.
- GENIE Model GS-4390 Rough Terrain Scissor Lift, New 2001; Dual Fuel, LP or Gas; 4WD; Pneumatic Tires; 69" x 152" Platform; 43; Max Platform height; 1,500 lb. capacity; Extendable Platform;
- JLG Model 1930 ES, Elec. Scissor Lift; New 2006; 18' 8" Max Platform Height; 500 lb. cap. 142 hrs. Extendable Platform;
- GENIE Model Z45/25 Rough Terrain Boom Lift, New 1999; 4WD; Pneu Tires; 45' Max Platform Height; 24' Max Horizontal Reach; 500 lb. capacity; Dual Fuel-LP or Gas; 2524 hrs.
- JLG Model 450AJ Series II rough Terrain Boom Lift, New 2003, 4WD; Pneu. Tires; 45' max Platform Height; 24' max horz. Reach; 500 lb. capacity; LP; 1713 hrs.
- Strato-Lift & Boom Model TRX-18 Elec. Scissor Lift, 18' Max Platform Height; 500 lb. cap. 2' x 4' platform; Extendable to 6'; 1226 hours.



Ford F-350 "Super Duty"



Ford F-350 Dually "Super Duty"



Tandem Axle Trailer



Ford F-350 Dually "Super Duty"



2004 Ravens Alum. Semi-Trailer, 52 Ft.



Cronkite Equipment Trailer



(3) Steel Containers

### ALUM. SEMI TRAILER • EQUIPMENT TRAILERS

- 2004 RAVENS Model HAFTW-5-905-3WSAWI; Aluminum Tandem Axle Flatbed Semi- Trailer; 52' in length; 71,700 lb. GVWR; Spread Axles; Nice!
- 2005 Moritz Int'l Tandem Axle Equip. Trailer; Single Wheels, 28' over all length; 23' deck; 5' beavertail; Ramps; wood deck;
- 2003 Moritz Int'l Tandem Axle Equip. Trailer; 14,000 lbs. GVWR, Tandem with Single Wheels; 21' over all; 16' deck; 5' beavertail with ramps; wood deck;
- Cronkite Tandem Axle Equipment Trailer; 18' overall length; Ramps;
- 2002 Foster Model BASS 1814 Tandem Axle Equip. Trailer; 14,000 GVWR, Single Wheels; 18' overall; Ramps, Wood Deck;
- Moritz Int'l Tandem Axle Gooseneck Equip. Trailer; Duals; 37' overall with 7' deck on top of gooseneck; 25' Deck; 5' Beavertail with Ramps;

### ALUM. SEMI TRAILER • EQUIPMENT TRAILERS - continued

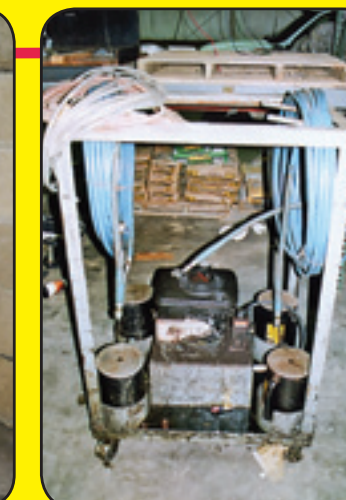
- 2005 Cronkite Model 2600EWA Tandem Axle Equip. Trailer; 12,300 lb. GVWR; Single wheels; 18' overall with Ramps;
- ### PICK-UP TRUCKS • LEXUS SUV
- 2005 Lexus SUV Model GX470; 3<sup>rd</sup> Seat; 84,000 miles; 4WD; Well Kept;
  - 2002 Ford F350 Lariat Dually Super Duty Pick-up Truck; Power Stroke Diesel; V-8; Crew Cab; AT/AM/FM/CD/AC/PW/PL/ 4x4;
  - 2000 Ford F350 Super Duty Pick-up; Power Stroke Diesel; V-8; Extended Cab; Manual Trans; AM/FM/CD/PW/PL/ 207,190 miles;
  - 2000Ford F350XL Super Duty Pick-up; Power Stroke Diesel; V-8; Crew Cab; AT/AM/FM/CD/AC 156,000 Miles;
  - 1999 FORD F350 Lariat Dually Super Duty Pick-up; Crew Cab; AT/AM/FM/CD/AC/PW/PL; 4X4; 149,037 Miles;



Miller Syncrowave 250



(2) Miller Diesel Welder/Generators



Hyd. Pump & Jacks



"Sullivan Palatek" Portable Air Compressor



Ingersoll-Rand Port. Air Compressor, 375 CFM



Ingersoll-Rand "Air Source"



Pontoon Barge



Aluminum Walk Boards



Perry Scaffolding

### AIR COMPRESSORS

- Ingersoll Rand Model P375WCU Portable Air Compressor, New 1998; Cummins B3.9-110 Diesel Engine, 375 CFM; 100PSI; 3393 hrs.
- Ingersoll Rand Model "Airsorce Plus 185" Portable Air Compressor; New 2006; Diesel Powered; 549 hours;
- Ingersoll Rand Model AirSource Plus 185" Portable Air Compressor; Diesel; 270 hours;
- Ingersoll Rand Model P375WCU Portable Air Compressor; New 1998 Cummins Diesel 375 CFM; 100 PSI; 2871 hrs.
- Ingersoll Rand Model "AirSource 185" Portable Air Compressor; New 2007; Diesel powered; 219 hours;
- Sullivan Palatek D45006CA Cat Diesel Trailer Mounted Air Compressor;
- Ingersoll Rand XP375 Diesel Powered, Trailer Mounted Air Compressor; John Deere Diesel; New 2005

### WELDERS

- MILLER Syncrowave 250 DX Mig Welder
- MILLER "Big 40 Diesel" CC\*DC\*Welding Power Generator;
- (2) Miller Trail Blazer 302 CC/CV/AC/DC; 10,000 Watt Welder/Generator;
- (4) Miller Super S-32P Voltage Sensing Wire Feeders;
- Miller "BIG BLUE 251D" CC/DC Arc Welding Power Source;

**THOMPSON Auctioneers, Inc.**

Thinking of an Auction?  
Need an Appraisal? Know of a Plant Closure?

Call Steve Thompson or Bryan Harvey  
937-426-8446 • www.thompsonauctioneers.com



Can't attend the auction? Bid live on-line at [www.bidspotter.com](http://www.bidspotter.com)