

CURVE TABLE

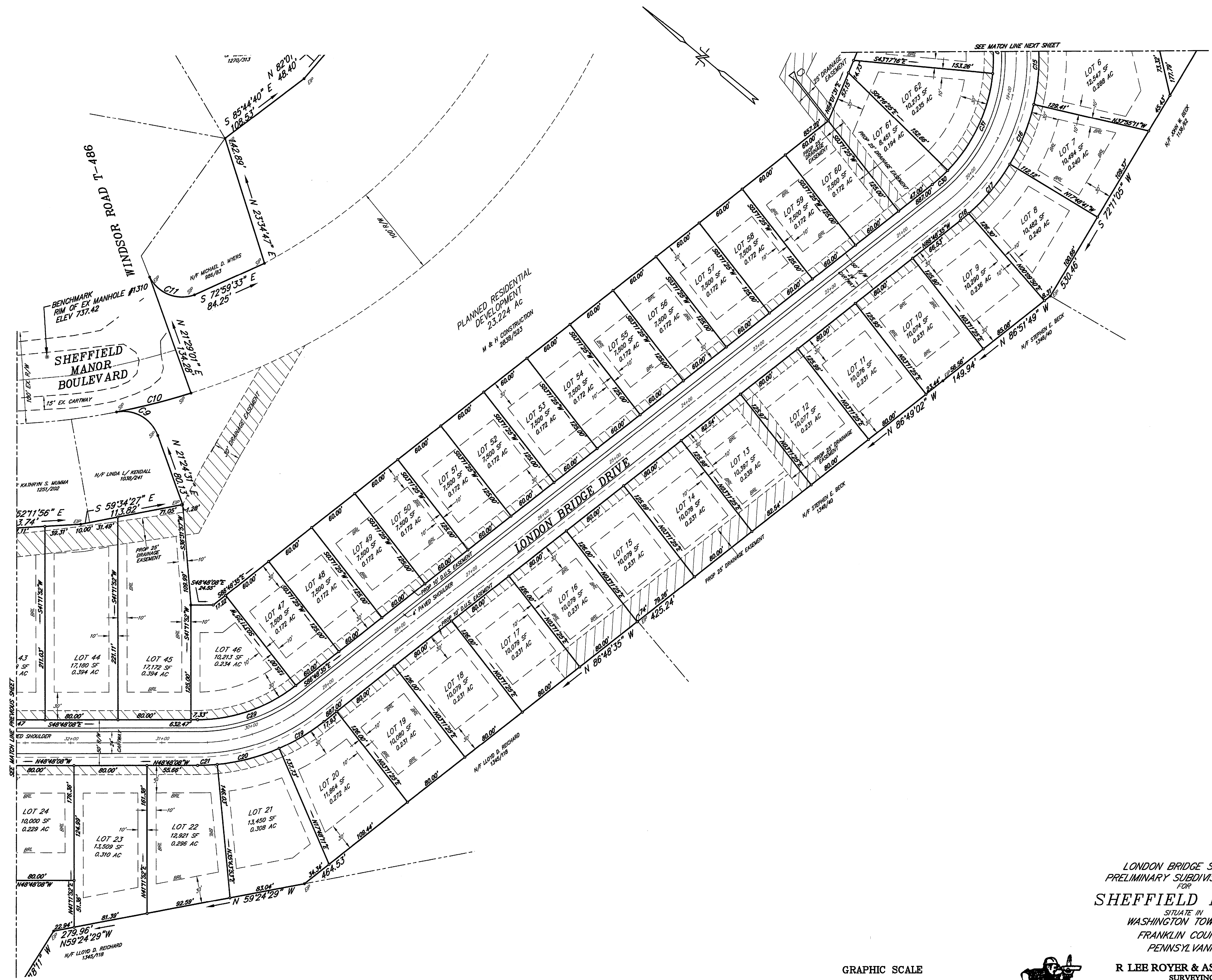
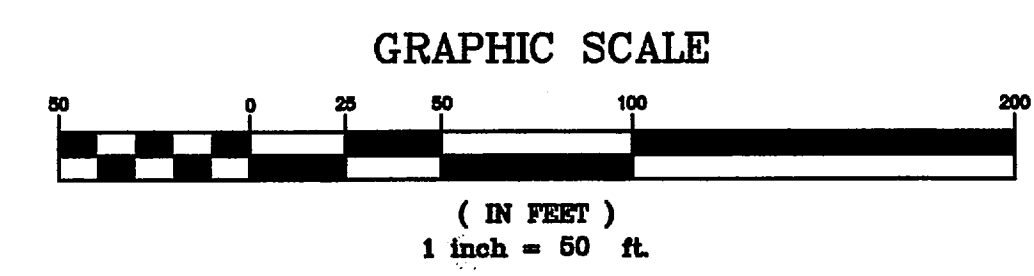
CURVE	LENGTH	RADIUS	ANGLE	CHORD	C. BEARING
C1	42.83	40.00	87°38'22"	44.51	S81°15'28"E
C2	47.08	40.00	67°28'55"	44.41	N111°11'13"W
C3	400.70	300.00	76°31'42"	371.57	S07°22'21"E
C4	267.94	275.00	55°49'28"	257.47	N03°01'10"E
C5	63.00	40.00	80°14'24"	56.69	N69°52'03"W
C6	58.78	365.00	9°13'30"	58.72	N24°03'41"E
C7	56.63	40.00	81°07'19"	52.02	N19°08'08"W
C8	84.29	250.00	8°28'40"	84.24	S89°55'58"E
C9	57.74	40.00	82°42'21"	52.86	S27°17'14"E
C10	94.80	175.00	30°58'19"	93.45	S49°33'42"W
C11	18.02	175.00	5°44'05"	18.02	S31°07'35"W
C12	31.66	225.00	8°03'46"	31.64	N32°12'25"E
C13	70.59	225.00	17°58'31"	70.30	N45°13'34"E
C14	70.59	225.00	17°58'31"	70.30	N63°12'04"E
C15	70.59	225.00	17°58'31"	70.30	N81°10'35"E
C16	57.38	225.00	14°36'46"	57.23	S79°00'12"E
C17	70.40	225.00	12°55'42"	70.12	S63°13'58"E
C18	21.47	225.00	5°28'00"	21.46	S51°32'08"E
C19	36.13	40.00	51°45'12"	34.91	N74°40'44"W
C20	72.86	65.00	64°13'21"	69.10	N69°26'40"W
C21	294.17	65.00	239°16'18"	100.09	S24°55'58"W
C22	32.56	65.00	28°41'57"	32.22	S11°23'54"E
C23	36.13	40.00	51°45'12"	34.91	S22°55'32"E
C24	62.80	40.00	89°52'33"	56.55	N66°13'06"E
C25	62.86	40.00	90°02'27"	56.59	S03°46'54"E
C26	116.09	175.00	38°00'28"	113.97	S67°48'22"E
C27	22.80	175.00	7°27'50"	22.78	N69°27'30"E
C28	119.18	175.00	39°00'51"	116.57	N68°11'00"E
C29	56.62	175.00	18°32'32"	56.37	N33°26'36"E
C30	144.80	225.00	36°52'24"	142.32	S46°36'44"W
C31	340.50	175.00	111°28'50"	289.27	N59°12'39"W
C32	56.67	175.00	18°33'18"	56.43	N02°48'24"E
C33	158.97	150.00	60°41'54"	151.58	S15°15'53"E
C34	211.89	200.00	60°41'54"	202.11	S15°15'53"E
C35	40.48	125.00	18°33'18"	40.20	N02°48'24"E
C36	243.21	125.00	111°29'50"	208.62	N59°12'39"W

Record of Revisions

Date	Initials	Revision Made
3/13/07	JAE	Revisions per CS Divisions & Borough of Waynesboro comments
3/27/07	JAE	Revisions per CS Divisions comments dated 3/22/07
4/18/07	JAE	Revisions per CEM/WM comments
E-45	JAE	LET + WTM A

LONDON BRIDGE SECTION
PRELIMINARY SUBDIVISION PLAN
FOR
SHEFFIELD MANOR
SITUATE IN
WASHINGTON TOWNSHIP
FRANKLIN COUNTY
PENNSYLVANIA
R LEE ROYER & ASSOCIATES
SURVEYING
PENNSYLVANIA - MARYLAND
10764 BUCHANAN TRAIL EAST
WAYNESBORO, PA 17268
717-762-8619
SHEET 3

OWNER/DEVELOPER
M&H CONSTRUCTION
5172 SALEM CHURCH ROAD
WAYNESBORO, PA 17268
717-762-9679
DEED REF. 2838-523
Area
34.057 AC
Scale
1" = 50'
Date
10 OCT 06
Drawn
JAE
Checked
JAE
File
6115



SEE MATCH LINE PREVIOUS SHEET

SEE MATCH LINE NEXT SHEET