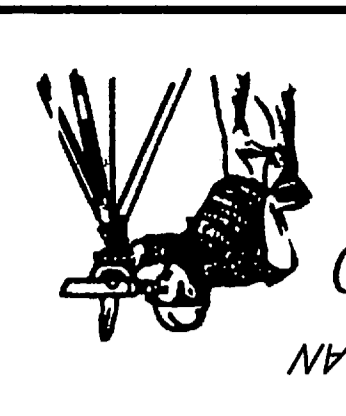
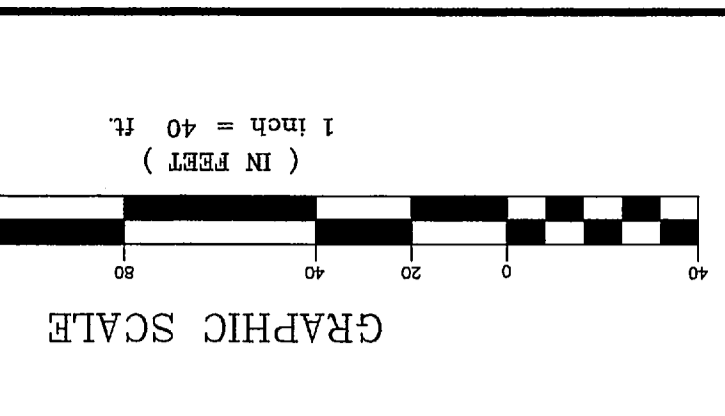


DEED REFERENCE: 2838/233  
 AC. 6.03  
 SCALE: 1" = 40'  
 DATE: 12/15/06  
 DRAWN BY: R. LEE ROYER  
 CHECKED BY: R. LEE ROYER  
 FILE: 6115

**R. LEE ROYER & ASSOCIATES**  
 SURVEYING  
 PENNSYLVANIA - MARYLAND  
 10764 BUCKHORN TRAIL EAST  
 WAYNESBORO, PA 17268  
 717-762-8619



**SHEFFIELD MANOR PRD**  
 FINAL SUBDIVISION AND LAND DEVELOPMENT PLAN  
 FOR  
 PHASE 1  
 WASHINGTON TOWNSHIP  
 FRANKLIN COUNTY  
 PENNSYLVANIA



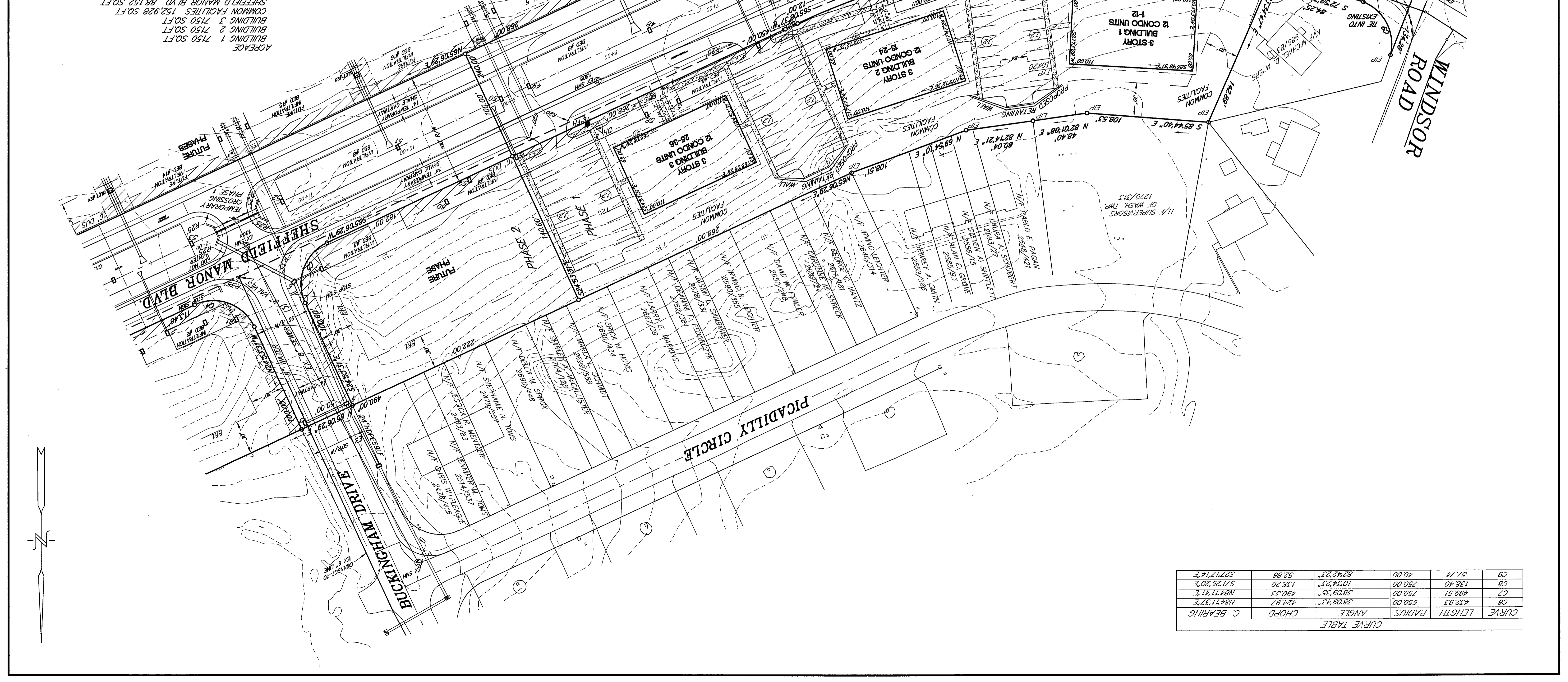
NOTE:  
 THE COMMON FACILITIES ARE TO BE CONVEYED TO  
 SHEFFIELD MANOR COMMUNITY ASSOCIATION INC.  
 THE COMMON FACILITIES ARE THE LAND AREAS  
 EXCLUDING THE BUILDING PADS AND PUBLIC STREETS.

**Record of Revisions**

Date	Revision Made
9/2/07	Revisions per C.S. Division comments dated 1/29/07
07	JAE Revisions per WMA and engineer comments
1/16/07	JAE WITH COMMENTS

**ACREAGE**

BUILDING 1	7150 SQ.FT.
BUILDING 2	7150 SQ.FT.
BUILDING 3	7150 SQ.FT.
COMMON FACILITIES	152,928 SQ.FT.
SHEFFIELD MANOR BLVD	88,152 SQ.FT.
<b>TOTAL</b>	<b>262,530 SQ.FT. (6.03AC)</b>



**CURVE TABLE**

CURVE	LENGTH	RADIUS	ANGLE	CHORD	C. BEARING
C6	432.93	650.00	38.09°43"	424.97	N84°11'37"E
C7	499.51	750.00	38.09°35"	490.33	N84°11'41"E
C8	138.40	750.00	10.34°23"	138.20	S71°26'20"E
C9	57.74	40.00	82°42'23"	52.86	S27°17'14"E