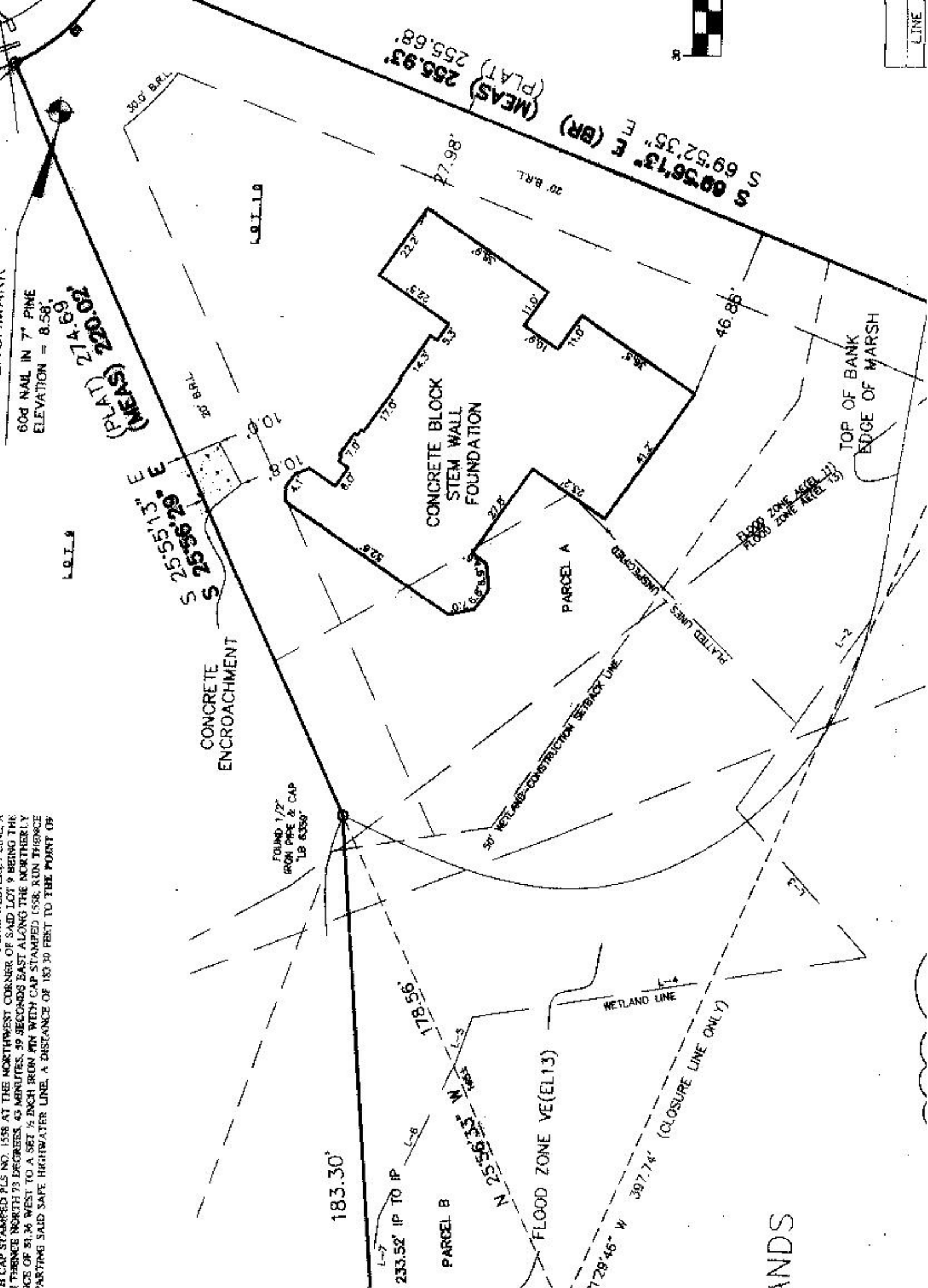


AS CAP STAMPED PLS NO. 1558 AT THE NORTHWEST CORNER OF SAID LOT 9 BEING THE
 1/4 SECTION NORTH 73 DEGREES, 43 MINUTES, 59 SECONDS EAST ALONG THE NORTHERLY
 EDGE OF 81.36 WEST TO A SET 1/2 INCH IRON PIN WITH CAP STAMPED 1558, RUN THENCE
 MARKING SAID SAFE HIGHWAY LINE, A DISTANCE OF 183.30 FEET TO THE POINT OF



ANDS